



## ALICAP RETURNING \$2.4 MILLION TO ITS MEMBERS

The ALICAP Board of Trustees is proud to announce that it is returning \$2.4 million back to member school districts and educational service units (ESUs) for the 2020-21 school year in the form of a dividend. This most recent dividend grosses the total dollars returned to over \$25 million since 1990.

The increased dividend couldn't have come at a better time. Property reinsurance prices are rising with less capacity and stricter coverage which is also known as a "hard market." Nebraska Schools have had their fair share of wind and hail losses over the past several years and reinsurers were demanding increases and profits. ALICAP succeeded in renewing all \$400,000,000 of broad property coverage for all members while maintaining the low \$500 per occurrence deductible. Wind and hail deductibles were introduced this year, both percentage of building value and per occurrence deductibles, but ALICAP chose not to pass those on to its members.

Reinsurers are specifically excluding coverage for Communicable Disease on all lines of insurance. ALICAP will be adopting the exclusion language this year and follow the industry standard worldwide. This appears to be the new normal for insurance companies and pools alike but ALICAP will do whatever necessary to stabilize the market for our members.

ALICAP is able to purchase enhanced coverages due to the group purchasing power of 174 member school districts and will continue to maintain broad coverages including Cyber Liability, Flood, Earthquake, Mold and Pollution.

Overall, the renewal went better than expected and although we had to increase contributions, we are reminded that whatever we do not spend on claims will go back to our OWNERS in the form of dividends.

To learn more, visit [www.ALICAP.org](http://www.ALICAP.org), or contact Megan Boldt, at [mboldt@NASBonline.org](mailto:mboldt@NASBonline.org).



**AUGUST 2020**

### UPCOMING INFO & EVENTS

Continue to check NASB's COVID-19 page for updates for you and your Board at [www.NASBonline.org](http://www.NASBonline.org)

DEADLINE FOR CEP - AUGUST 31 (SEE PAGE 5)

LEGISLATIVE LUNCHES - CANDIDATE Q&A'S THROUGHOUT SEPTEMBER ... MORE TO COME

THRIVING CHILDREN, FAMILIES & COMMUNITIES CONFERENCE  
SEPTEMBER 14

BOARD CANDIDATE WEBINARS  
SEPTEMBER 21 | OCTOBER 12

FACILITIES & CONSTRUCTION WORKSHOP  
SEPTEMBER 23 | KEARNEY

AREA MEMBERSHIP MEETINGS  
HOME INVASION!  
PREMIERING SEPTEMBER 30  
<https://vimeo.com/449704597>



LABOR RELATIONS CONFERENCE  
OCTOBER | VIRTUAL

NASB'S ANNUAL DELEGATE ASSEMBLY  
NOVEMBER | VIRTUAL

2020 STATE EDUCATION CONFERENCE  
NOVEMBER 18-20 | OMAHA

NEW BOARD MEMBER WORKSHOPS  
DECEMBER 2020

#liveNASB



PREMIERING SEPTEMBER 30

WATCH THE TRAILER NOW AT ...

<http://members.nasbonline.org/index.php/area-membership-meetings>

REGISTRATION IS NOW OPEN FOR THE VIRTUAL  
2020 AREA MEMBERSHIP MEETING: HOME INVASION!

Due to Covid restricting our travel into 9 communities and a number of school buildings, we will be bringing this year's Area Membership Meetings to you in a virtual form. You will still have the opportunity to see and hear updates from many NASB staff members. We will verbally recognize boards who have earned the President's Board Award and Board of Excellence, as well as individual board members who have earned Level VII through X during this points year.

The fee for the 2020 Area Membership Meeting will be a \$100 flat fee per district. In order to receive attendance points, each board member must be registered for the meeting. Upon registering, the first person from each district will be charged \$100, each subsequent registration will be complimentary.

The Area Membership Meeting virtual content will be made available on the NASB website. Registered attendees may login any time between September 30 and October 14 and view the content at their own convenience. You must be registered in order to access the virtual meeting. This could be a great chance for your entire board to view the virtual event together at a work session, just be sure each individual board member gets registered so everyone receives their points.

TOPICS COVERED WILL INCLUDE:

News & Welcome from NASB from John Spatz and President Stacie Higgins

Legislative update from Colby Coash

ALICAP run-down from Megan Boldt

Board Leadership during these trying times from Marcia Herring

2020 State Education Conference information from Sharon Endorf

Awards of Achievement recognition from Shari Becker

Feasibility and the data districts need to make informed decisions from Jim Luebbe

EHA Alternative Network Opportunity from John Spatz

Delegate Assembly dates and procedures from Sallie Svatora

... And a few additional guests and surprises!

LEARN MORE AND REGISTER NOW AT ...

<http://members.nasbonline.org/index.php/area-membership-meetings>

## NEW SUPERINTENDENTS FOR 2020-21

Arnold – Joel Morgan  
Auburn – Dave Patton  
Aurora – Jody Phillips  
Bertrand – Jason Brown  
Centennial – Virginia Moon  
Chadron – Ginger Meyer  
Chase County – Adam Lambert  
Cody-Kilgore – Ryan Orrock  
Crawford – Mo Hanks  
Deshler – Damon McDonald  
Dundy County Stratton – Rick Haney  
East Butler – Michael Eldridge  
Elba – Allison Pritchard  
Elgin – Mike Brockhaus  
Elm Creek – Bret Schroder  
Fillmore Central – Josh Cumpston  
Fort Calhoun – Jerry Green  
Gering – Gary Cooper  
Giltner – Nick Mumm  
Hyannis – Travis Hawk  
Johnson County Central – Jon Rother  
Kimball – Trevor Anderson  
Loup County/Sargent – Rod Richardson  
Maywood – Mark Bejot  
McPherson County – Tim Vanderheiden  
Mead – PJ Quinn  
Nebraska City – Mark Fritch  
Neligh-Oakdale – Ron Beacom  
Osceola – Jason Lavaley  
Palmyra – Mike Hart  
Ponca – Duane Krusemark  
Rock County – Mark Otten  
Scribner-Snyder – Joe Peitzmeier  
Shelby-Rising City – Doug Kluth  
Shelton – Shanna Gannon  
Silver Lake – Terry Bauer  
Stanton – Darren Soucie  
Sterling – Adrian Allen  
Summerland – Dale Martin  
Valentine – Mike Halley  
Verdigre – Chuck Kucera  
Wakefield – Mike Moody  
Wood River – Terry Zessin

# BUCKLE UP! ROUGH ECONOMIC ROAD AHEAD



LEADERSHIP

INNOVATION

VISION

ENGAGEMENT

#liveNASB

## MISSSED THE JUNE 30 WORKSHOP? SIGN UP TO WATCH NOW!

As we move to our new Post-COVID normal, there are some critical financial considerations of which schools need to be aware. Hear what challenges are looming, and what plans need to be made now to weather the storm ahead.

Carl Dietz and Matt Fisher, former school superintendents who are currently providing school finance training and assistance across Nebraska, share insights and recommendations to help you prepare your school district for the coming year and for tight financial times in years to come.

AVAILABLE TO VIEW THROUGH OCTOBER 14 AT [WWW.NASBONLINE.ORG](http://WWW.NASBONLINE.ORG)

# BUCKLE UP!



# ROUGH ECONOMIC ROAD AHEAD



Things are looking a little different for all of us right now, but **ensuring a safe environment**, whether in person or virtual, is still important.

Learn how comprehensive screening can aid you in making informed decisions for your schools by contacting us today.

**Your people, our priority.**

Neal Josten  
[njosten@onesourcebackground.com](mailto:njosten@onesourcebackground.com)  
402.933.9999 ext. 5600

[onesourcebackground.com](http://onesourcebackground.com)



## WE DO NOT KNOW, WHAT WE DO NOT KNOW!

"Decisions are the hardest thing to make, especially when it is a choice between where you should be and where you want to be." — Unknown

How many times in the last six months have you said or heard someone say, "I don't know what we should do." Because we do not know, what we do not know, all we can do is plan with purpose and safety in mind. After weeks, months, and countless hours of planning, the first day of school has arrived! There are school districts throughout the great State of Nebraska that are conducting only remote learning, some that are providing a blend of remote learning and modified classroom learning, and school districts that have returned to learning with modifications to the school environment. Some districts require some form of face covering, others may consider the face covering an option. In the end, we all want our children and staff to be safe.

However or whatever the plan may be, we will land on our feet, as that is what we do in times of adversity. Think about where we were at when all schools closed their learning facilities and did not have a choice but to revert to remote learning, we rose to the occasion and discovered that the sun still came up and the district was providing learning in spite of the circumstances. School districts in most communities rallied the support of staff and community members to feed our children, and we arrived at our new normal. Today we return to school and we are living a different learning environment due to the modifications, but kids will be learning. **We all care about the safety of our children and our staff** and we extend our thanks and appreciation for the countless hours of planning and preparation that your district has invested in preparing for a return to learning.

## CANDIDATE WEBINAR (SEPTEMBER AND OCTOBER)

We recently concluded our first of three free NASB Candidate Webinars that engage and allow candidates to gain insight into the roles and responsibilities of a school board member with the opportunity to ask questions. More important than ever before, the challenges in front of school board members require candidates to be mindful and well prepared for the road ahead. The Candidate Webinars serve as a way to help potential school board members have an advantage in understanding their purpose, responsibilities, community leadership, and authority. Led by Marcia Herring, NASB Director of Board Leadership, the Association will provide two additional (free) webinars scheduled on:

- Monday, September 21 - 6:00-7:30 PM CT
- Monday, October 12 - Noon-1:00 PM CT

\*Note: Please see [www.NASBonline.org](http://www.NASBonline.org) to learn more about how you register for the Candidate Webinar.

## NEW BOARD MEMBER WEBINAR/WORKSHOP

If possible, Association staff members are planning to provide the traditional workday workshop in December. We will share more information regarding location, site, and registration in the weeks to come.

Additionally, please keep up to date on upcoming New Board Member Webinars, to be offered through four modules and each module will be presented as a "live" webinar from 5:50pm to 8:30pm over the course of four evenings. Participant registration will include the opportunity to select one evening to participate in his or her choice of any of the offered dates for each module. The registration will also include the new board member publication.

- Module 1: Board Roles and Responsibilities – November 30/December 1, 2, & 3, 2020
- Module 2: Open Meetings Law/Advocacy – December 7, 8, 9, & 10, 2020
- Module 3: At the Board Table – January 4, 5, 6, & 7, 2021
- Module 4: Board Leadership – February 1, 2, 3, & 4, 2021

As the decisions are made and plans are adjusted over the coming months, we continue to encourage you to utilize the NASB Board Leadership resource Planning and Preparing for Learning in 2020-2021. Let this resource help frame those conversations and pose the questions that need to be answered to advance into the 2020-21 school year with resiliency, collaboration, and a mission-oriented approach.

*Thank you for the work you are doing for Nebraska's students.  
Your NASB Board Leadership Team - Marcia, Kori, Melissa, and Karla*

*Please call us if we can support you in any way 402-423-4951  
(View August/September Board Meeting Topics on Page 10)*





# FAQs FOR FUNDING SCHOOL MEALS: UTILIZING CEP

NASB  
Nebraska Association of  
SCHOOL BOARDS

LEADERSHIP

INNOVATION

VISION

ENGAGEMENT

#liveNASB

As many districts anticipate a different back-to-school experience this year, one of the many questions raised is what does it look like to fund and provide needed school meals to a growing population of students? Since March, school nutrition staff have continued to see an increase in demand and need for school-provided meals, while facing the same, or more limited, resources and/or budget. Given such changes in both demand and resource availability, it can be crucial to explore additional possibilities to meet such demands through opportunities such as Community Eligibility Provision (CEP).



## WHAT IS CEP?

As a federal program that enables high-poverty schools to provide free breakfast and lunch to all students, regardless of family income, CEP is a funding solution that more and more districts in Nebraska have chosen to utilize for the 2020-21 school year than ever before. As districts across the state experience the shift in unemployment while sustaining the current or growing need for meal distributions, CEP is anticipated to provide an increasingly viable solution.

## ARE OTHER DISTRICTS IN NEBRASKA USING CEP?

Yes! In fact, as we look to the 2020-21 school year the CEP participation in Nebraska has grown significantly: 20 new schools and 14 new districts have opted to begin using CEP, which doubles the CEP participation in Nebraska to a total of 53 schools from 29 districts.

## WHEN DOES MY DISTRICT NEED TO DECIDE IF WE WILL USE CEP FOR 2020-21?

This year, due to a nationwide waiver issued by the USDA, districts have until August 31, 2020 to communicate their decision to utilize CEP to the Nebraska Department of Education (NDE). For more information regarding the application process, visit NDE's CEP webpage at <https://www.education.ne.gov/ns/forms-resources/national-school-lunch-program/community-eligibility-provision-cep/>.

## IS CEP THE BEST SOLUTION TO MEET YOUR SCHOOL'S NEEDS?

Districts can select if they want to opt into utilizing CEP on a school-to-school or on a district-wide basis. To discover whether CEP is the best solution for your school or district, you can utilize the proxy data provided by the Nebraska Department of Education (NDE) to aid in your district's decision-making and/or you can access the recording to the Nebraska CEP Webinar provided on August 4th by the collaborative efforts of Nebraska Appleseed, NDE, and No Kid Hungry.

## WHO CAN I REACH OUT TO WITH QUESTIONS?

If you have additional questions regarding CEP and/or to learn more, contact Melissa Lusk at [mlusk@NASBonline.org](mailto:mlusk@NASBonline.org).

## LISA STEINKUHLER CELEBRATES FIVE YEARS WITH NASB

NASB is proud to recognize Lisa Steinkuhler, Executive Administrative Assistant, as she celebrates her fifth year with NASB.

Lisa is most likely the first face you see when visiting NASB. She manages the accounts receivables for NASB, handles event registrations, database management, and assists with the Education Leadership Search Service Program. Her contributions to the organization are a critical part of our success.

Congratulations Lisa on five years with NASB!



Your Board Policy Manual holds the collective decisions of your School Board, providing expectations and direction to your district when the Board is not in session. It serves as the continuing plan by which you govern your district and move it toward the goals and vision you and your staff have created together.

Updating and reorganizing your board policy manual while keeping previous decisions of the board in place is a time intensive process. Each district has a different history and, over the years, has made numerous important local board decisions differently than its neighboring districts. NASB provides the only Policy Update and Customization Service that keeps those previous decisions in place rather than throwing out your policy manual to replace it with a generic one.



Unfortunately, your policy manual may have obsolete, inaccurate, or unnecessary information that misleads or confuses your board members and staff. Worse yet, it may be missing important policy revisions that have occurred over the past several years and are critically important in setting expectations for the governance of your district or the direction of board discussions.

There are also basic protections that must be in place for your students, their parents, and your employees which may be reviewed prior to receiving important grants, funds, or certifications. Many of the most recently revised policies are quite lengthy and detailed due to the Every Student Succeeds Act and may be audited by state or federal agencies.

The goal of the NASB Policy Customization Service is to create a completed, customized policy manual with legal referencing and indexing that reflects in writing the operation of your own district. It should serve as a starting point on many of the important questions that come before the board over the course of the year.

This is a great time to consider beginning a board manual customization to give your board and administrators a much more accurate, complete, and user-friendly board policy manual for the future.

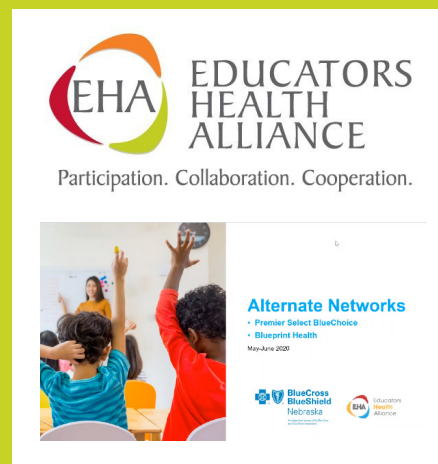
## EHA ALTERNATIVE NETWORK WEBINAR

CHECK OUT A QUICK 17-MINUTE WEBINAR FROM BCBS ON ALTERNATIVE NETWORKS, INCLUDING AN INTRO AND Q&A WITH NASB'S JOHN SPATZ.

<https://vimeo.com/436536900>

ALTERNATIVE NETWORKS HELP LOWER COST AND IMPROVE MEMBER BENEFITS FOR ALL WHETHER YOUR DISTRICT IS ELIGIBLE TO PARTICIPATE OR NOT.

STARTING NOW, WE ARE EDUCATING SCHOOL BOARD MEMBERS, ADMINISTRATORS AND TEACHERS BETWEEN NOW AND NEXT FALL PRIOR TO NEGOTIATIONS.





# IS THIS YEAR'S BOARD MEMBER OF THE YEAR ON YOUR BOARD?

Nebraska Association of  
SCHOOL BOARDS

LEADERSHIP

INNOVATION

VISION

ENGAGEMENT

#liveNASB



2019



2018



2017



2016



2015



2014

NASB and the State Board of Education are now seeking nominations for the annual Ann Mactier Award, recognizing one local school board member for their policy leadership and contributions to curriculum and instruction in Nebraska public schools.

PLEASE CONSIDER NOMINATING A DESERVING BOARD MEMBER FOR THIS HONOR

APPLICATION DEADLINE IS SEPTEMBER 25, 2020

For further details you may visit the Board Leadership section of [www.NASBonline.org](http://www.NASBonline.org), or contact Marcia Herring at 800-422-4572. Previous winners include:

2019 | VALERIE FISHER, PAPILLION LA VISTA

2018 | KATHY DANER, LINCOLN

2017 | BONNIE HINKLE, GRAND ISLAND

2016 | TERRI HAYNES, CHADRON

2015 | LINDA RICHARDS, RALSTON

2014 | BRAD KRIVOHLAVEK, NORFOLK

2013 | PATTY BENTZINGER, NORRIS

2012 | KATHY BARTEK, FALLS CITY

2011 | JULIE AGARD, KEARNEY

2010 | KIM FASSE, ELKHORN

2009 | RON PEARSON, ESU #3

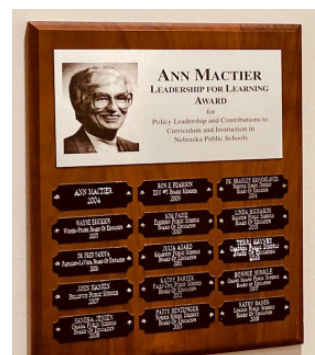
2008 | SANDRA JENSEN, OMAHA

2007 | JOHN HANSEN, BELLEVUE

2006 | FRED TAFOYA, PAPILLION LA VISTA

2005 | WAYNE ERICKSON, WISNER-PILGER

2004 | ANN MACTIER, OMAHA



2013



2012



2011

The 2020 Nebraska Education Law Book is now available to order at:

<http://members.nasbonline.org/index.php/news-resources/publications>

Deadline for ordering at the discounted rate is September 21. Estimated delivery February 2021

Contact Vicki with questions at 402-817-0305 or [vwinters@nasbonline.org](mailto:vwinters@nasbonline.org)



## 2020 THRIVING CHILDREN, FAMILIES, AND COMMUNITIES CONFERENCE



Children, families, and communities are coming together to find ways to thrive, now and into the future.

Register now to join us on Monday, Sept. 14, for the third annual Thriving Children, Families, and Communities Conference. This exciting day of virtual learning, sharing, and planning as community leaders from across Nebraska come together online to focus on high-quality early childhood education and its connection to economic development and community vitality.

This year's exciting online format of virtual learning, sharing, and planning will bring together community leaders, including those in education, economic development, child care, business, government, health care, higher education, and philanthropy, from across Nebraska to focus on high-quality early childhood education and its connection to economic development and community vitality.

### REGISTER NOW

<https://events.r2o.constantcontact.com/register/eventReg?oeidk=a07eh6vm6u63dd70b5d&oseq=&c=&ch=>

## NASB BOARD CANDIDATE WEBINARS

In anticipation of the upcoming school board elections, NASB has been hosting Board Candidate Webinars led by Marcia Herring, Director of Board Leadership. Non-Incumbent Candidates who were successful in the primary election have received an information packet that includes an invitation to participate in the Candidate Webinars, a copy of Preparing to Serve, and the 2020 NASB Membership Guide. We encourage you to participate alongside your non-incumbents! The NASB Candidate Webinars are designed to provide a general overview of board member roles and responsibilities, review of the NASB Board Standards, code of conduct, board meeting protocols, etc. the format will also allow for attendee questions. The webinars are free to all members and will be hosted via a Zoom electronic meeting platform. Remaining webinars include:

Mon, Sept. 21, 6:00-7:30 PM CT    Mon, October 12, Noon-1:00 PM CT

**WE ENCOURAGE ALL BOARD MEMBERS AND CANDIDATES TO JOIN US FOR THIS FREE EVENT.**

To register and receive access information, follow the link below:

[https://nasb.sjc1.qualtrics.com/jfe/form/SV\\_aXA3s7cmqjoRqzb](https://nasb.sjc1.qualtrics.com/jfe/form/SV_aXA3s7cmqjoRqzb)



# ADDITIONAL EVENTS TO CLOSE 2020

LEADERSHIP

INNOVATION

VISION

ENGAGEMENT

#liveNASB

**WEDNESDAY, SEPTEMBER 23 | KEARNEY**  
MORE INFORMATION COMING SOON ...

**KEARNEY & VIRTUAL**

NASA/NASB

**LABOR RELATIONS**

LABOR RELATIONS WILL BE VIRTUAL THIS YEAR AND BE HELD IN MID-OCTOBER  
DETAILS TO COME ...

**2020 STATE EDUCATION CONFERENCE | NOVEMBER 18-20, 2020**

**Growing Greatness**

**CHI HEALTH CENTER - DOWNTOWN OMAHA & VIRTUAL**

**NEW BOARD MEMBER WORKSHOPS**

These workshops are being offered both in-person and virtually.  
Stay tuned for dates and details.



## ... ENERGY PURCHASING

The NJUMP and CJUMP Interlocal natural gas-purchasing consortiums are intended to provide districts a fair degree of price certainty at budget time, which is now upon us. These consortiums are each governed by a Board of Trustees made up of board members, business managers and superintendents from the program's member districts. This provides boards with an experienced group of their peers working to get the best value for your district's dollars on those large outlays for utility expenditures every winter. In an uncertain economy, it's a great way to stretch every dollar to better serve your students.

*Contact Jim to learn more!*

## ... POLICY

The revisions to Title IX regulations have now gone into effect. The attorney generals of at least 18 states have been denied an injunction to postpone these changes for a year to allow more time for districts to deal with the extensive requirements for training and procedural updates. If prohibited behavior meets, or later is found to meet, at least one of three narrow tests for Title IX sexual harassment, that investigation procedure will take precedence over any other district procedures such as those defined in bullying, dating violence, or hazing policies. Investigators and final decision-makers must receive training on issues such as relevance of questions and evidence. These procedures ensure equal access to all information for both the victim and the accused persons.

*Contact Jim to learn more!*

## ... BOARD LEADERSHIP

Check out "At the Board Table" on Page 4 to see all that the Board Leadership team is up to.

### AUGUST/SEPTEMBER BOARD MEETING TOPICS

#### PLANNING:

Monitor progress of district goals, link goals to discussion and action items;  
Strategic Plan Progress Report

#### CURRICULUM:

Review Summer School Programs;  
Review School Improvement Plan

#### LEARNING COMMUNITY:

Coordinating Council Only – learning community levies and total assessed valuation due October 15

#### PERSONNEL:

Negotiations contract dispute decision (year of contract, if needed) due September 15; Personnel Report to the Department of Education due September 15; Negotiations board must respond to agent request due October 1

#### OTHER:

Annual Emergency Safety Plan – Annual Adoption; Annual District Report; Tax Request Hearing for Fund Levies due October 13; Poverty Plan due October 15; Superintendent file Membership Report due October 15; Limited English Proficiency Plan due October 15; Elementary Site Allowance due October 15; Distance Education Incentives Denial Appeal (through 2020) due October 1

*Marcia, Kori, Melissa & Karla*



**Paul Grieger**  
(800) 528-5145  
pgrieger@dadco.com



**Cody Wickham**  
(866) 809-5596  
cwickham@dadco.com



**Andy Forney**  
(866) 809-5443  
aforney@dadco.com

## Building a Better Future with Nebraska's Public Finance Partner

D.A. Davidson & Co. has long been a leader in innovative debt financing for school districts. What we're most proud of are the relationships we've nourished and the strong community improvements that are made as a result.

Our public finance professionals take a personal interest and a hands-on approach, carrying our deals from start to finish. Because you deserve solutions tailored to fit you.

- School Bond Issues
- Tax Anticipation / Construction Notes
- Lease-Purchase Financing
- QCPUF Bonds
- Refinancing Bond Issues



**D | A | DAVIDSON**

450 Regency Parkway, Suite 400 | Omaha, NE 68114  
dadavidson.com | D.A. Davidson & Co. member FINRA and SIPC



## ... SEARCH, STRENGTHS & AWARDS

### AWARDS OF ACHIEVEMENT

An email was sent August 3rd with award recipient names. We are working on a distribution plan to be available soon. Please contact Lisa with any points or awards questions [lsteinkuhler@NASBOnline.org](mailto:lsteinkuhler@NASBOnline.org)

### EDUCATION LEADERSHIP SEARCH SERVICE

Contact Shari at [sbecker@NASBOnline.org](mailto:sbecker@NASBOnline.org) for a proposal to facilitate a search for your next Superintendent/ESU Administrator. Applicants - please contact Anne at [asilknitter@nasbonline.org](mailto:asilknitter@nasbonline.org) to hear about the new online application process and discuss openings.

### GALLUP STRENGTHSFINDER

"Each person's greatest room for growth is in the areas of his or her greatest strength." Don Clifton People exceptionally talented in the *Context* theme enjoy thinking about the past. They understand the present by researching its history. *Context* is one of the five least common strengths. People who know their strengths and use their strengths every day, have higher levels of energy, are more likely to achieve their goals, are more confident and perform better.

- Shari -

## ... ALICAP & INSURANCE

ALICAP's 20-21 premium contribution payments are due to the NASB ALICAP office by September 30th.

If any school district/ESU needs an electronic copy of their billing statement email Megan Boldt at [mboldt@NASBOnline.org](mailto:mboldt@NASBOnline.org).

Thanks, Megan!

## ... ADVOCACY & GOVERNMENT RELATIONS

60 days are in the books. Stay engaged during the upcoming interim hearings, elections and the 2021 Session will be here before we know it! A full recap of the past Session, the interim, elections and 2021 can be found in the latest edition of NASB's *Legislative Notes* posted on the website.

### INTERIM HEARINGS

<https://nebraskalegislature.gov/session/interim.php>

### LEGISLATIVE CANDIDATE Q&A'S

The November election is just over 10 weeks away! Start researching candidates now, get to know their positions on local control, finance, and education in general! Look for information coming soon on Candidate Q&A's coming this September!

Call Colby & Matt with any questions! #liveNASB

## ... MEMBER ENGAGEMENT

Hi Members! I'm excited to share that we have a number of events coming up, both in-person and virtual. Please join us at some or all of the following learning opportunities:

Buckle Up Finance Workshop – Virtual

Board Candidate Webinars – Virtual

Facilities & Construction Workshop – Both in-person and virtual

Area Membership Meetings – Virtual

Labor Relations – Virtual

State Education Conference – Both in-person and virtual

New Board Member Workshops – Both in-person and virtual

Looking forward to SEEing many of you soon! Sharon

## ... TECHNOLOGY

Join Us: Wed, August 26, 11 AM CT ... Lunch & Learn: An overview of Sparq Negotiations!

Attention New Superintendents! Are you new to your district and need training on Sparq Meetings or Sparq Negotiations? Reach out to Darion or Nicole to schedule a training!

Welcome New Sparq Subscribers: Glitter Public Schools; Central Community College – Grand Island; Thayer Central Community Schools

Darion - [dmiller@NASBOnline.org](mailto:dmiller@NASBOnline.org)

Nicole - [nkobus@NASBOnline.org](mailto:nkobus@NASBOnline.org)

Board Notes is published on a monthly basis as a member service. Advertising is available in every issue. To advertise or become an Affiliate, please contact Matt Belka for further information. Articles or advertising contained herein do not necessarily represent the views or policies of NASB.

Nebraska Association of School Boards | 1311 Stockwell Street - Lincoln, NE 68502 | Matt Belka, Editor | John Spatz, Publisher

LEADERSHIP

INNOVATION

VISION

ENGAGEMENT

#liveNASB

Join NASB, as we travel the state for various workshops, meetings and events throughout the year.  
*To learn more, and register, visit the Events tab of [www.NASBOnline.org](http://www.NASBOnline.org)*

<http://members.nasbonline.org/index.php/events>

*To register for an NASB event, click on the 'My Membership' link, then navigate to the 'Events' dropdown and select 'Register'.  
If you do not have an email and password to log in or have forgotten it, please contact NASB at 800-422-4572 for assistance.*

THANKS FOR ALL YOU DO FOR YOUR BOARD, YOUR COMMUNITY AND THE ENTIRE STATE BY SERVING PUBLIC EDUCATION IN NEBRASKA.  
NOW MORE THAN EVER, WE ARE SEEING THE IMPORTANCE IN SCHOOL BOARDS STEPPING UP AS LEADERS OF THEIR COMMUNITIES!

Access NASB's Covid-19 Resources page at <http://members.nasbonline.org/index.php/news-resources/covid-19-resources>

## AUGUST

FINAL DAY OF THE 106TH LEGISLATURE, 2ND SESSION WAS AUGUST 13

TEACHER OF THE YEAR APPLICATIONS -- NOW DUE AUGUST 27 TO NDE

## SEPTEMBER

LEGISLATIVE CANDIDATE Q&A'S | THROUGHOUT SEPTEMBER | MORE TO COME ...

BUFFETT EARLY CHILDHOOD THRIVING CHILDREN, FAMILIES & COMMUNITIES CONFERENCE | SEPTEMBER 14

NASB BOARD CANDIDATE WEBINAR #2 | SEPTEMBER 21

FACILITIES & CONSTRUCTION WORKSHOP | SEPTEMBER 23 | KEARNEY

ANN MACTIER/SCHOOL BOARD MEMBER OF THE YEAR NOMINATIONS DUE | SEPTEMBER 25

# AREA MEMBERSHIP

# MEETINGS

PREMIERING  
SEPTEMBER 30 ...

<https://vimeo.com/449704597>

Board Presidents: Check your inbox each month for the monthly 'NASB Update' to include in your meeting agenda.  
Please contact [mbelka@NASBOnline.org](mailto:mbelka@NASBOnline.org) with any questions, or if you are not receiving them.

# YOUR NASB BOARD OF DIRECTORS & STAFF



## YOUR NASB LEADERSHIP TEAM



Stacie Higgins  
President  
Nebraska City



Brad Wilkins  
President-Elect  
Ainsworth



Kim Burry  
Vice President  
Bayard



Steve Blocher  
Past President  
West Point

## YOUR REGION DIRECTORS



Region 1  
Neal Kanel  
HTRS



Region 2  
Sarah Centineo  
Bellevue



Regions 3, 6 & 7  
Shavonna Holman  
Omaha



Regions 3, 6 & 7  
Tracy Casady  
Omaha



Regions 3, 6 & 7  
Nancy Kratky  
Omaha



Regions 4 & 5  
Bob Rauner  
Lincoln



Regions 4 & 5  
Kathy Danek  
Lincoln



Region 8  
Jay Irwin  
Ralston



Region 9  
Alan Moore  
ESU 3



Region 10  
Paul Brune  
Heartland



Region 11  
Jim Vlach  
Lyons-Decatur Northeast



Region 12  
Lisa Wagner  
Central City



Region 13  
Marilyn Bohn  
Ravenna



Region 14  
Sandy Noffsinger  
Dundy County Stratton



Region 15  
Barb Svoboda  
Mullen



Region 16  
Patti Gubbels  
Norfolk



Region 17  
Richard Dohma  
Ponca



Region 18  
Doug Keener  
Mitchell



Region 19  
Stacy Jolley  
Millard

## YOUR NASB STAFF



John Spatz  
Executive Director



Shari Becker  
Director of Education  
Leadership Search Service



Craig Caples  
Director of Technology



Karla Kruse  
Board Leadership/ALICAP  
Admin. Assistant



Kori Stanosheck  
Board Leadership  
Engagement Associate



Matt Belka  
Director of Marketing,  
Communications & Advocacy



Sharon Endorf  
Director of  
Member Engagement



Jim Luebke  
Director of Policy Services



Lisa Steinkuhler  
Executive Admin. Assistant



Megan Boldt  
Associate Executive Director/  
Director of ALICAP



Marcia Herring  
Director of Board Leadership



Melissa Lusk  
Board Leadership  
Development Associate



Sallie Horky Svatora  
Chief Operating Officer



Colby Coash  
Associate Executive Director/  
Dir. of Government Relations



Makenzie Brookhouser  
Events Manager &  
Accounting Associate



Rachel Horstman  
Business Manager



Anne Silknitter  
Education Leadership Search  
Service Associate



Vicki Walter-Winters  
Legal Admin. Assistant



LEADERSHIP	INNOVATION	VISION	ENGAGEMENT	#liveNASB
				
				
				
				

## ACCOUNTING

Watts and Hershberger, P.C.  
Jim Watts - 402-483-7512  
jw1cpa@aol.com - gowh.com  
(CPA, Accounting)

## ARCHITECTS

BVH Architecture  
Cleve Reeves - 402-475-4551  
creeves@bv.com - bv.com  
(Architecture)  
\* GOLD LEVEL AFFILIATE

CMBA Architects  
Brad Kissler - kissler.b@cmbaarchitects.com  
Jim Brisnehan - brisnehan.j@cmbaarchitects.com  
Troy Keilig - keilig.t@cmbaarchitects.com  
308-384-4444 - cmbaarchitects.com  
(Architecture, Master Planning, Interiors, Bond Promotion/Community Engagement)  
\* GOLD LEVEL AFFILIATE

Carlson West Povondra Architects  
Jamie Eckmann - 402-551-1500  
jeckmann@cwparhitects.com  
cwparhitects.com  
(Architecture, planning, feasibility studies)  
\* GOLD LEVEL AFFILIATE

DLR Group  
Vanessa Schutte - 402-393-4100  
vschutte@dlrgroup.com - dlrgroup.com  
(Architecture, engineering, Ed. facility planning)

## AWARDS & PLAQUES

Awards Unlimited  
Tim Moravec - 402-474-0815  
tmoravec@awardsunlimited.com  
awardsunlimited.com  
(Trophies, awards, plaques, etc.)

## BUILDING CONTROLS/SERVICES

Control Management Inc.  
Nathan Haug - 402-571-9454  
nathan@cmioma.com - cmioma.com  
(Building Automation, Security and Energy Optimization for New and Existing Systems)

## BUILDING CONTROLS/SERVICES

Johnson Controls  
Jason Peck - 308-708-9479  
jason.peck@jci.com - jci.com  
(HVAC, Building Automation, Service Agreements, Security and Fire, among others)  
\* GOLD LEVEL AFFILIATE

## CONSTRUCTION SERVICES

Ayars & Ayars, Inc.  
Darl Naumann - 402-435-8600 - 402-570-9214  
dnaumann@ayarsayars.com - ayarsayars.com  
(Design-build leader building beneficial relationships, processes, and projects)  
\*GOLD LEVEL AFFILIATE

BD Construction  
Marsha Wilkerson - 308-234-1836  
mwilkerson@bdconstruction.com  
BDconstruction.com  
(Construction Mgmt at Risk and as Agent, Facility Planning, Site Selection, Pre-bond Community Ed., Stakeholder Engagement)  
\*GOLD LEVEL AFFILIATE

Boyd Jones Construction  
Emily Bannick - 402-550-1808  
ebannick@boydjones.biz - boydjones.biz  
(Construction Management, Pre-Bond, Pre-Construction, Facility Evaluation, Early Stage Planning)  
\* GOLD LEVEL AFFILIATE

Cheever Construction  
Douglas Klute - 402-477-6745  
dklute@cheeverconstruction.com  
cheeverconstruction.com  
\* Silver Level Affiliate

Front Runner Fab., Inc.  
Bryan Dubas | 308-550-0151  
info@thecastermaster.com  
(Bleacher design, sales, installation)

W. A. Klinger  
Matt Thompson - 712-233-3233  
mthompson@waklinger.com - waklinger.com  
(Pre-Construction, Construction Management, Design-Build, and General Contracting Services.)  
\* GOLD LEVEL AFFILIATE

## ENERGY SERVICES

Ameresco, Inc.  
David Goebel - 308-392-3283 - 402-370-8822  
dgoebel@ameresco.com - ameresco.com  
(Capital Improvements, Energy Efficiency & Renewable Energy Solutions for Buildings)  
\* GOLD LEVEL AFFILIATE

Optimized Systems  
Mike Taylor - 402-981-1005  
mike.taylor@optimized-systems.com  
Optimized-Systems.com  
(Energy Optimization & Management, Commissioning, Metering, Energy Studies, Mechanical System Assessments, Troubleshooting)  
\* Silver Level Affiliate

TRANE  
Dave Raymond - 402-596-8000 - 402-452-7762  
dave.raymond@trane.com - trane.com/omaha  
(Building Construction & Energy Services)  
\* GOLD LEVEL AFFILIATE

## EQUIPMENT AND FURNITURE

Sheppard's Business Interiors  
Ken Sigmon - 402-393-8888  
ksigmon@sbi-omaha.com - sbi-omaha.com  
(Furniture, Space Planning, Asset Management)

## FINANCIAL SERVICES

D.A. Davidson & Co.  
Paul Grieger - 402-392-7986  
pgrieger@dadco.com  
Cody Wickham - 402-392-7989  
cwickham@dadco.com  
Andy Forney - 402-392-7988  
aforney@dadco.com  
dadavidson.com  
(Bonds/Election Services, Lease Purchase)  
\* GOLD LEVEL AFFILIATE

First National Capital Markets  
Tobin Buchanan - 308-352-8328  
tbuchanan@fnni.com  
Carl Dietz - 308-289-3920 carldietz@fnni.com  
Matt Fisher - 308-380-3831 mfisher@fnni.com  
fncapitalmarkets.com  
(Public Finance, Election Guidance)  
\* GOLD LEVEL AFFILIATE

# NASB AFFILIATES



## LEADERSHIP

## INNOVATION

## VISION

## ENGAGEMENT

## #liveNASB

### FINANCIAL SERVICES

First Nebraska Credit Union  
Michele Byrnes - 402-492-9100  
marketing@firstnebraska.org - firstnebraska.org  
(Taking care of your financial needs!)

Nebraska Liquid Asset Fund - NLAF  
Barry Ballou - 402-705-0350  
balloub@pfm.com - NLAFpool.org  
(Liquid Asset Fund, financing programs)  
\* GOLD LEVEL AFFILIATE

Piper Sandler  
Jay Spearman - 402-599-0307  
jay.spearman@psc.com  
(Lease Purchase, Construction Notes, Voted Bonds, Refunding Bonds, QCPUF Bonds)  
\* GOLD LEVEL AFFILIATE

Wells Fargo Bank  
Andrew J. Detlefsen - 402-434-6701  
andrew.j.detlefsen@wellsfargo.com - wellsfargo.com  
(Financial Services, Banking)  
\* Silver Level Affiliate

### FOOD SERVICE

Lunchtime Solutions  
Deni Winter - 605-235-0939 Ext 106  
deni@lunchtimesolutions.com  
lunchtimesolutions.com  
(Progressive Food Service Management)  
\* GOLD LEVEL AFFILIATE

Opaa! Food Management of Nebraska  
Greg Frost - 816-210-9359  
gfrost@opaafod.com - opaafod.com  
(Contract Food Service Management)

### INSURANCE SERVICES

Blue Cross Blue Shield of Nebraska  
Courtney Ray - 402-458-4823  
courtney.ray@nebraskablue.com  
nebraskablue.com  
(Group health insurance)  
\* GOLD LEVEL AFFILIATE

National Insurance Services  
Steve Ott - 800-627-3660  
sott@nisbenefits.com - nisbenefits.com  
(Group LTD, Life, Vision, Special Pay Plans, HRA's)

Public Risk Management  
Sheri Shonka - 402-884-3751 - 877-649-4612  
sheri.shonka@prnne.com - alicap.org  
(ALICAP, Insurance services)  
\* GOLD LEVEL AFFILIATE

### LEGAL SERVICES

Mueller Robak, LLC  
William Mueller - 402-434-3399  
mueller@muellerrobak.com  
(Lobby firm)

### MECHANICAL CONSTRUCTION

VideoTronix Inc.  
David Harvey - 402-210-2839  
david.harvey@vtisecurity.com - vtisecurity.com  
(IP Video Surveillance, Networks, Access Control, Storage)

### MENTORING

TeamMates Mentoring  
Hannah Miller - 319-610-8538  
hannah@teammates.org - teammates.org  
(Together we transform lives)  
\* GOLD LEVEL AFFILIATE

### PLAYGROUND/SCOREBOARDS/SURFACING

Creative Sites, LLC  
Julie Kutilek - 402-614-4606 - 800-266-1250  
julie@creativesitesllc.com  
(Playground equipment, Site furnishings)  
\* GOLD LEVEL AFFILIATE

Crouch Recreation  
Eric Crouch - 402-496-2669  
eric@crouchrec.com - crouchrec.com  
(Playgrounds, Shelters, Scoreboards, Safety Surfacing & Site Amenities Manufacturers Rep)  
\* GOLD LEVEL AFFILIATE

Fisher Tracks, Inc.  
Jordan Fisher - 800-432-3191 - 515-432-3191  
jfisher@fishertracks.com - fishertracks.com  
(Installation, Refurbishment & Design Build of All-Weather Running Tracks)

### SAFETY & SECURITY SERVICES

One Source  
The Background Check Company  
Neal Josten - 402-933-9999 Ext 5600  
njosten@onesourcebackground.com  
onesourcebackground.com  
(Employment, Volunteer, Contractor Screening)  
\* GOLD LEVEL AFFILIATE

### TEACHING & LEARNING

Curriculum Leadership Institute  
Emily Makelky - 620-794-1431  
emily@cliweb.org  
Stacey Bruton - 620-794-1431  
stacey@cliweb.org - www.cliweb.org  
(ALL students deserve the respect of high expectations!)  
\* GOLD LEVEL AFFILIATE

### TECHNOLOGY CONSULTING

PRISM advisors  
Jason Richards - 402-593-8911  
jprichards@prism-advisors.com  
prism-advisors.com  
(PEOPLE, PROCESS & SYSTEMS. IT strategic planning and project management)  
\* GOLD LEVEL AFFILIATE

### TECHNOLOGY/SOFTWARE

Midwest Alarm Services  
Mike Wells - 402-331-6111 - 402-474-3737  
Mike.Wells@mw-as.com  
(Life Safety Systems provider)

Sparq Data Solutions  
Craig Caples - 402-423-4951  
ccaples@sparqdata.com - sparqdata.com  
(Paperless Board Meetings, Staff Negotiations, Public Document Management, Document Imaging & Scanning)  
\* GOLD LEVEL AFFILIATE

### THERAPY SERVICES

Central Nebraska Rehabilitation Services  
Mary Walsh-Sterup  
308-675-1853 ext. 3222  
mary@cnrehab.com - cnrehab.com  
(Providing PT, OT and Speech therapy in the school system)

Board Notes is published on a monthly basis as a member service.

Advertising is available in every issue.

To advertise or become an Affiliate, please contact Matt Belka for further information. Articles or advertising contained herein do not necessarily represent the views or policies of NASB.

## NEBRASKA ASSOCIATION OF SCHOOL BOARDS

1311 Stockwell Street  
Lincoln, NE 68502  
Matt Belka, Editor  
John Spatz, Publisher

[www.NASBonline.org](http://www.NASBonline.org)

[www.twitter.com/NASBonline](https://www.twitter.com/NASBonline)

[www.facebook.com/NASBonline](https://www.facebook.com/NASBonline)

<https://vimeo.com/NASBonline>





1311 STOCKWELL STREET  
LINCOLN, NE 68502  
WWW.NASBONLINE.ORG

RETURN SERVICE REQUESTED



# NASB BOARD NOTES

A monthly publication from the Nebraska Association of School Boards



LEADERSHIP

INNOVATION

VISION

ENGAGEMENT

#liveNASB

## IN THIS EDITION

ALICAP RETURNING \$2.4 MILLION TO ITS MEMBERS  
AREA MEMBERSHIP MEETINGS: HOME INVASION!  
BUCKLE UP! ROUGH ECONOMIC ROAD AHEAD  
AT THE BOARD TABLE  
FAQS FOR FUNDING SCHOOL MEALS: UTILIZING CEP  
HOW WELL DO YOU KNOW YOUR BOARD'S POLICIES?  
EHA ALTERNATIVE NETWORK WEBINAR  
IS THIS YEAR'S BOARD MEMBER OF THE YEAR ON YOUR BOARD?  
BUFFETT EARLY CHILDHOOD CONFERENCE  
NASB BOARD CANDIDATE WEBINARS  
ADDITIONAL EVENTS TO CLOSE 2020  
TRAINING, NETWORKING, ENGAGEMENT & EVENTS  
... AND MUCH MORE!

## AS WELL AS "THIS MONTH IN ..."

... ADVOCACY & GOVERNMENT RELATIONS  
... ALICAP & INSURANCE  
... BOARD LEADERSHIP  
... ENERGY PURCHASING  
... MEMBER ENGAGEMENT  
... POLICY  
... SEARCH, STRENGTHS & AWARDS  
... TECHNOLOGY