



LEADERSHIP

INNOVATION

VISION

ENGAGEMENT



CALL TO ACTION: SPENDING IS NOT THE PROBLEM SCHOOL BOARDS WANT PROPERTY TAX RELIEF, TOO

We are one-third of the way through this year's 90-day Legislative Session, and one thing is certain. There is an incredibly strong narrative; your property taxes are too high because those darn school boards (and other local political subdivisions such as cities and counties) are spending too much.

And not only are they already spending too much, any penny extra in proposed cuts or relief will be immediately spent as well.

Newsflash, school board members want property tax relief, too.

Nebraska's 1,700 locally elected school board members understand their role in remaining fiscally conservative as they use tax payer dollars.

In hearing after hearing, debate after debate, your elected officials at the state level continue to state that the only way to property tax relief is to control spending at the local level. They have said Nebraska schools are one of the highest spending in the nation, causing our property taxes to be high. All these assertions, and others, are contributing to a narrative that is failing all of us.

Here is where we need your help ... Contact your senators, copy in members of the Revenue and Education Committees, and share the data from your districts to show them that smart, thoughtful decisions are being made.

Take Elkhorn, a growing district whose enrollment has nearly doubled in the last decade, quadrupled in the last 20 years. It is inevitable that their General Fund budget will show increases in expenditures to meet their needs.

Take West Point, who dropped their expenditure budget by almost \$500,000 a year ago when shutting down the elementary school in Beemer, and who cut the budget another \$50,000 this year.

There are 258 other examples that smart, thoughtful decisions are being made across the state. Share

FEBRUARY 2019

UPCOMING EVENTS

NAEP STATE CONVENTION

March 26-27 | Grand Island

NSBA ANNUAL CONFERENCE

March 30 - April 1 | Philadelphia

SPRING LEGAL WORKSHOPS

April 16 | Gering

April 17 | North Platte

April 24 | La Vista

Since 2009-10, the state's average spending growth per year is 3.6 percent, while the Collective School Total Annual Cost has averaged 3.32 percent annual growth.

NEW BOARD MEMBER FOLLOW-UP

June 13 | Kearney

NASB MEMBER GOLF OUTING

June 13 | Kearney

SCHOOL LAW SEMINAR

June 13-14 | Kearney

NASB ORIENTATION

July 24 | Lincoln

#liveNASB

CONTINUED ON PAGE 2

CONTINUED FROM PAGE 1

these stories, help break this growing narrative.

CONTINUING THE VISION ...

We've spent the last few years trying to look ahead, beyond the walls of our schools, to come up with a solution to address the current hot topic of property taxes and how our schools are funded.

Nebraska spends an average of \$12,299 per student. While some claim the state's per-student spending is one of the highest in the nation. Nebraska actually ranks near the middle, as the 19th highest, when you look to the census data. Not bad, but we need to ask more questions to see how we truly compare.

Nebraska is the eighth smallest state in population density. Geographically large, small in population. It is much easier to lower the cost per person when you have more density of population. For a true comparison of per-student costs, we must look to variables such as state special education requirements, unfunded mandates and transportation requirements.

Furthermore, since 2009-10, the state's average spending growth per year is 3.6%, while the Collective School Total Annual Cost has averaged 3.32% annual growth. It is difficult to hear the state say school spending is the problem when the state is spending more.

If you look at state spending over the last 20 years, you see more money going to expenses and less going to investments. State programs such as corrections, child welfare and Medicaid are taking up a larger percentage of the state budget. This is an unsustainable trend. A reactive spend vs. a proactive investment.

Regarding investments, Nebraska is third highest in the nation in the percentage of school spending getting to what is most important, the classroom. This is local control working. Local boards in Nebraska are prioritizing the funding to go closest to the student. Comparatively, Nebraska ranks fifth lowest in the percentage of funding going to school administration.

So now what? To truly address our overreliance on property taxes while continuing to invest in our children, we must broaden our approach. Currently, Nebraska ranks near the bottom in the nation in state support for education, with 58.7% of the total cost coming from our property tax payers. If you look at the other states above 50%, the majority are Northeastern states with much more population density and much different economies.

Let's address causes, not symptoms. We need to develop a vision to channel more people into high-demand, high-wage jobs. We need to diversify our economy to lower the burden on our agriculture industry. We need to eliminate barriers to rural economic development such as housing shortages, child care shortages and



inadequate technology infrastructure.

In short, Nebraska needs a strategic plan around economic growth and opportunity.

Nebraska schools need the resources to continue to prepare our next generation of entrepreneurs, employees and leaders. We are very proud of the work our teachers, administrators and school board members do; however, schools working alone is not the solution. We need broad community engagement around long-term goals.

But first, let your senator(s) know that you're making smart, thoughtful decisions as you use tax payer dollars!

FIND YOUR SENATOR(S) INFORMATION HERE:
https://nebraskalegislature.gov/senators/senator_list.php

REVENUE COMMITTEE

Sen. Lou Ann Linehan, Chair - 402-471-2885 - llinehan@leg.ne.gov
Sen. Tom Briese - 402-471-2631 - tbriese@leg.ne.gov
Sen. Sue Crawford - 402-471-2615 - scrawford@leg.ne.gov
Sen. Curt Friesen - 402-471-2630 - cfriesen@leg.ne.gov
Sen. Mike Groene - 402-471-2729 - mgroene@leg.ne.gov
Sen. Mark Kolterman - 402-471-2756 - mkolterman@leg.ne.gov
Sen. Brett Lindstrom - 402-471-2618 - blindstrom@leg.ne.gov
Sen. John McCollister - 402-471-2622 - jmccollister@leg.ne.gov

EDUCATION COMMITTEE*

Sen. Lynne Walz - 402-471-2625 - lwalz@leg.ne.gov
Sen. Tom Brewer - 402-471-2628 - tbrewer@leg.ne.gov
Sen. Rick Kolowski - 402-471-2327 - rkolowski@leg.ne.gov
Sen. Adam Morfeld - 402-471-2720 - amorfeld@leg.ne.gov
Sen. Dave Murman - 402-471-2732 - dmurman@leg.ne.gov
Sen. Patty Pansing Brooks - 402-471-2633 - ppansingbrooks@leg.ne.gov

*Sens. Groene & Linehan serve on both Committees

BAYARD IS IN A CLASS OF ITS OWN

LEADERSHIP

INNOVATION

VISION

ENGAGEMENT

You've seen the numbers. 1,700 locally elected school board members serving 260 school districts and ESUs. But did you know ... the general breakdown of board members in Nebraska is around 30% female, 70% male. (A 2018 survey done by the National School Board Association showed the general breakdown of school board members across the U.S. to be around 46% female, 52% male.)

About 8.3% of Nebraska's boards are all-male. 9.2% have a female majority. And we found a small group of boards with only one male.

But there's only one board that is all-female.

As of this January's meeting, the Bayard Public Schools Board of Education now consists of six female members. Pictured below, left to right, are Becky Henkel, Kim Burry, Lisa Ouderkirk, Donna Stuart, Kim Kildow, and Carolyn Applegate.

"At Bayard, we have a long tradition of excellence in board service," said Superintendent, Travis Miller. "This community cares deeply about education and doing things in the proper manner to educate and care for our students. Our Board of Education is united around quality education, fiscal responsibility, governance through policy, and planning for excellence. I fully expect our all-female board to become known as the most professional, knowledgeable, and dedicated board in the state. I believe that board members are the guardians of the values and the future of our community. It is an honor to work with and for such an excellent board."

Board President, Kim Kildow echoed those sentiments, "I am in my ninth year on the Bayard Public Schools Board of Education, and this is the first year that we have had an all-female board. I appreciate the insight and perspectives of my fellow female board members. Not only are they leaders in our school district, but they are also leaders in our community and their respective professions. It is a privilege to collaborate with such a talented group of ladies!"



Bayard Public Schools

Board of Education

Kim Kildow, President

Carolyn Applegate

Kim Burry

Becky Henkel

Lisa Ouderkirk

Donna Stuart

Travis Miller - Superintendent

Home of the Tigers

Enrollment = 395

NASB Region #18

www.bayardpublicschools.org



LEADERSHIP

INNOVATION

VISION

ENGAGEMENT

CALL FOR PROPOSALS DUE MARCH 1

[HTTPS://NASB.ENVISEAMS.COM/PROPOSALS](https://nasb.enviseams.com/proposals)

SHARE THE INNOVATIVE STRATEGIES AND
GREAT THINGS HAPPENING IN YOUR DISTRICT.

2019 STATE EDUCATION CONFERENCE

TAKING IT TO THE STREETS

NOVEMBER 20-22 - CHI HEALTH CENTER - DOWNTOWN OMAHA



STATE EDUCATION CONFERENCE: DID YOU KNOW?

NASB
Nebraska Association of
SCHOOL BOARDS

LEADERSHIP

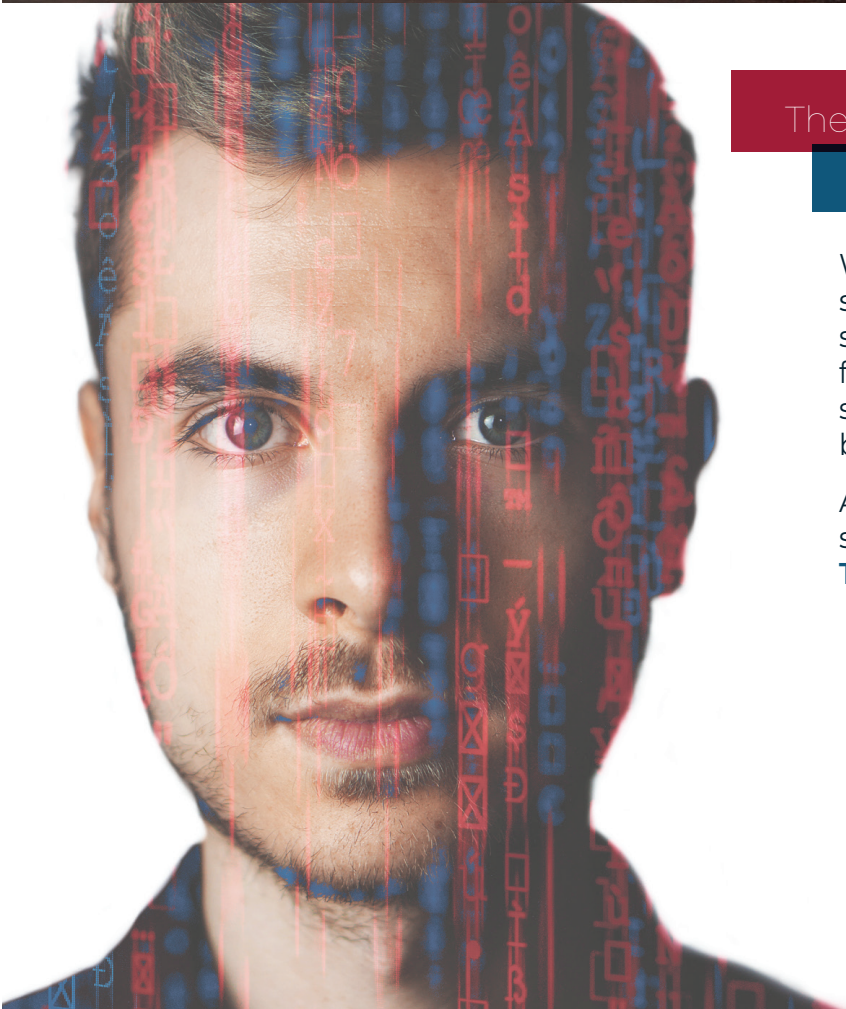
INNOVATION

VISION

ENGAGEMENT

WITH THE MOVE TO DOWNTOWN OMAHA, ALL ATTENDEES
WILL BE IN ONE OF TWO HOTELS, BOTH RIGHT ACROSS THE
STREET FROM THE CHI HEALTH CENTER CONVENTION AREA!
NO SHUTTLES ... NO WORRIES!

CONFERENCE REGISTRATION & HOTEL INSTRUCTIONS WILL
OCCUR IN SEPTEMBER, LOOK FOR MORE INFORMATION IN
THE COMING MONTHS! #liveNASB



The **TotalCheck** Package:

Applicant Verification

We utilize powerful tools to verify the subject's information. By thoroughly searching public records, we are able to find aliases or "AKA" names, misrepresented social security numbers, falsified dates of birth and more.

Applicant Verification is just one of six services that comes standard in our **TotalCheck** Package.



The Background Check Company

Contact us today for background screening
customized to fit your unique needs!

800.608.3645 ext. 5600
njosten@onesourcebackground.com
onesourcebackground.com

NASB'S ANNUAL MEMBERSHIP DRIVE UNDERWAY

LEADERSHIP

INNOVATION

VISION

ENGAGEMENT

ADVOCACY

BOARD LEADERSHIP

EDUCATION LEADERSHIP SEARCH SERVICE

LEGAL RESOURCES

POLICY SERVICES

As Nebraskans, hard work and doing what's right is just what we do. School board members know that no mission is more challenging, satisfying, or essential to the future of our state than preparing the next generation to be successful adults.

We know your job isn't always easy. Tough decisions need to be made. But the love and support for public education, your district, community, and for Nebraska does not go unnoticed.

It motivates us to provide you the money-saving programs and information-sharing services and events you need to thrive as we shape a strategic vision to develop a long-term, sustainable system of funding public education. We are creating the tools and building partnerships for local school boards to become leaders in their community.

Thank you for the work you are doing. As a locally elected official serving public education, your voice is strong, your actions have impact. Share your story, speak up for the work being done in your schools by your students.

Over the past few weeks, you and/or your district/ESU should have received more information and ideas so you and your board can continue to utilize all of the resources, programs, services, and networking opportunities your NASB membership provides.

Your membership grants you access to all of the resources NASB provides and allows your collaborative thinking and partnerships to continually enhance and build upon where we currently are, and have the power to go. We appreciate the opportunity to work with you every day, as we all aim to keep public education strong across Nebraska.

REMINDER:

We are offering a 2% discount for all annual dues received prior to April 1



1,900,000 NEBRASKANS

312,000 STUDENTS

1,700 SCHOOL BOARD MEMBERS

260 DISTRICTS/ESUS

ONE NEBRASKA

BANNER COUNTY SCHOOL BOARD APPROVES 4-DAY WEEK



LEADERSHIP

INNOVATION

VISION

ENGAGEMENT

At the February meeting earlier this morning, the Banner County Board of Education approved the 2019-2020 school calendar that includes a 4-day school week, with an optional 5th day for enrichment activities. Students in grades K-12 can choose to attend Option Enrichment Fridays, with the district providing the same bus transportation, breakfast, and lunch as a regular school day.

The district initially considered a 4-day week to boost student enrollment in 2016. The decision-making process, which included research, community consultation, and compiling information from districts operating on a 4-day week, ended with a 3-3 vote by the board in 2018. A modified calendar that increases professional learning and collaboration time for teachers with about every other week on a 4-day schedule has been in operation since that decision.

Most districts examine the cost-saving benefits of a 4-day week. “Costs were never a factor in our decision-making process,” stated Board President Ron Johnson, “it was about growing the school and providing access to learning opportunities for students.” The idea for a 5th optional attendance day with enrichment activities was proposed by BCS Superintendent, Dr. Evelyn Browne, at the board’s annual retreat. “Like Google Time, Genius Hour, or Passion Projects – with that 5th day, students can explore, create, collaborate – all 21st century workplace skills.”

“There are benefits for students, families, staff, and of course, the district,” said Browne, “we will be able to provide learning opportunities from Autocad to Zumba for those students who choose to attend Option Enrichment Fridays.”

“Banner County students will benefit from increased learning time focused on S.T.E.A.M. activities with the addition of 25 Option Enrichment Fridays in the calendar,” stated Principal Charles Jones.

Faculty and staff will collaborate in developing a menu of activities that are hands-on and aligned to 21st century and state standards. Students will select from the menu, and will have the option of changing to a different session if it is not what they expected. A concept akin to the “non-conference” approach to participation.

Banner County School is the only district in the Panhandle region to go to a 4-day week. It is the only district that will offer Option Enrichment Fridays as a way to “engage hearts and minds, and strengthen student connection to our school,” stated Browne. “This is the outside-of-the-box thinking that we need,” commented Board Member Larry Pahl.

The board hopes to generate some Option student interest in Banner County School through this innovation. The district will accept Option enrollment applications until March 15th for the 2019-2020 school year.



Banner County Public Schools

Board of Education

Ron Johnson, President
Wittni Boettcher
Barbara Cross
Grant Lerwick
Douglas Olsen
Larry Pahl

Evelyn Browne - Superintendent

Home of the Wildcats

Enrollment = 128
NASB Region #18

www.bcswildcats.org

LEADERSHIP

INNOVATION

VISION

ENGAGEMENT

Bringing the Midwest to the City of Brotherly Love Nebraska Reception at the NSBA Conference

Mark Your Calendar
Saturday, March 30 | 4:00 to 7:00 PM
More Details to Come ... Stay Tuned



Sponsored by D.A. Davidson & Co.
member SIPC and FINRA

NATIONAL SCHOOL BREAKFAST WEEK: START YOUR ENGINES!

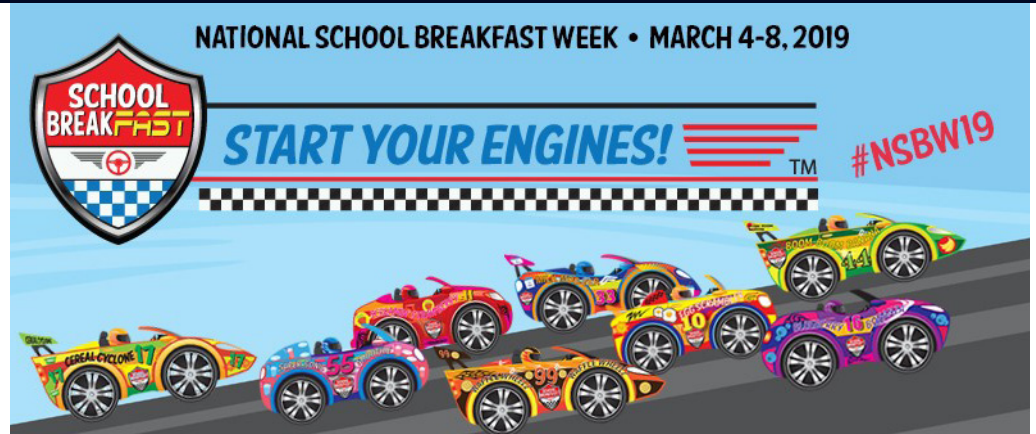
Division of
SCHOOL BOARDS

LEADERSHIP

INNOVATION

VISION

ENGAGEMENT



Why is school breakfast worth celebrating? By fueling up for the day with school breakfast, schools are seeing benefits that reach far beyond enhanced nutrition, including:

- Scoring on average 17% higher on standardized tests
- Better attendance, averaging 1.5 more days per year
- Ultimately leading to a 20% higher chance of graduation

(No Kid Hungry, 2019)

Considering these positive educational outcomes, in addition to lessening food insecurity amongst students, it is no reason why starting your engines is something worth celebrating! We invite all districts to participate in the celebration of how your district is supporting your students' nutrition by joining us on social media for #NSBW2019 on March 4-8, 2019. Furthermore, we encourage districts to spread the excitement for school breakfast within your district by utilizing the School Nutrition Association's toolkit for NSBW located on their website at:

<http://schoolnutrition.org/Meetings/Events/NSBW/2019/>

While Nebraska ranks as one of the lowest participating states in breakfast participation (47 out of 50), at a 44.1% participation rate, this year's National School Breakfast Week (NSBW) is a great opportunity to share what your district is doing to ensure a healthy start to the day for the kids in your schools. Are you wondering how to increase your school breakfast participation rate? Consider implementing a new strategy such as Breakfast in the Classroom, Grab and Go breakfasts, or Second Chance Breakfast to maximize participation and educational outcomes in the classroom. For more information on these strategies and CEP/other funding opportunities, contact Melissa Lusk at mlusk@NASBOnline.org.

We hope you will join us and gear up for #NSBW2019!



PHOTO CREDIT: NO KID HUNGRY



PHOTO CREDIT: NO KID HUNGRY

LEADERSHIP

INNOVATION

VISION

ENGAGEMENT

... POLICY

The Legislature is looking closely at school meal charge policies this year (LB728). All districts should have such policies in place to meet 2017 USDA lunch program guidelines. They must specify that free and reduced lunch programs and payment/ticketing procedures are handled confidentially. The district must set written guidelines regarding the collection of delinquent meal charges and how meals for such students will be handled. Many districts have chosen to offer non-reimbursable meals (such as a plain sandwich and milk or fruit) for students with delinquent charges, often supported in whole or in part by community funding.

Contact Jim to learn more!

... MEMBER ENGAGEMENT

February visits: Elgin, Battle Creek, Maywood, ESU 11, & McCool Junction.

The 2019-2020 NASB Membership campaign is underway. Please contact me if you have not yet received your information.

Benefits of your NASB membership include:
Legislative tools & education; Board development events; Custom workshops and retreats; Legal resources; ALICAP insurance pool eligibility; NJUMP/CJUMP natural gas purchasing; Sparq tech products; Education Leadership Search Services; Policy Services; Gallup Strengths workshops.

2019 State Conference breakout session proposals are due March 1.

- Sharon -

... ENERGY PURCHASING

Looking out to the next three years, gas prices may become more favorable than any time in the past decade and a half.

NJUMP and CJUMP members may have a chance to protect from future increases by having much of their supplies hedged at extremely competitive prices.

If you're not a member of one of these gas purchasing interlocals, this is a great time to contact Jim Luebke about joining us for next year.

Contact Jim to learn more!



Paul Grieger
(800) 528-5145
pgrieger@dadco.com



Cody Wickham
(866) 809-5596
cwickham@dadco.com



Andy Forney
(866) 809-5443
aforney@dadco.com

Building a better future with Nebraska's Public Finance Partner

D.A. Davidson & Co. has long been a leader in innovative debt financing for school districts. What we're most proud of are the relationships we've nourished and the strong community improvements that are made as a result.

Our public finance professionals take a personal interest and a hands-on approach, carrying our deals from start to finish. Because you deserve solutions tailored to fit you.

- Tax Anticipation / Construction Notes
- Bond Underwriting Services
- Lease-Purchase Financing
- QCPUF Bonds



D | A | DAVIDSON

450 Regency Parkway, Suite 400 | Omaha, NE 68114
dadavidson.com | D.A. Davidson & Co. member FINRA and SIPC

... SEARCH & STRENGTHS

Winside & Callaway application deadlines coming soon!

Apply at: www.nasbsuptsearch.org

NASB has filled the following Supt/ESU Administrator positions ... Ainsworth, Crofton, ESU #13, Freeman, Garden County & Gothenburg, and is in the process of finalizing Maxwell, Norris, Sandhills & York.

GALLUP STRENGTHS

Is Achiever in Your Top 5:

The more I have to do, the more I get done!

Is Competition in Your Top 5:

Winner, Scorekeeper, Comparer, Measurer

Is Individualization in Your Top 5:

Do you like to buy gifts specific to the recipient?

Contact Shari to schedule a Gallup board session!

-Shari -

LEADERSHIP

... ALICAP & INSURANCE

ALICAP's Safety Focus for February is Winter Driving and March the focus will be Playground Safety.

It's been a long and brutal winter, hang in there everyone!

Thanks, Megan!

... ADVOCACY & GOVERNMENT RELATIONS

We are 1/3 of the way through the 2019 Legislative Session.

Wow, the level of engagement from Nebraska's school board members during this year's Session has been incredible. From coming to Lincoln, to contacting Senators, to simply reaching out to stay informed ... it all makes a difference!

Hearings continue through March.

Keep up on everything happening through NASB's *Bills* page under the *Government Relations* section of the

NASB website, through our quick videos on social media, and through NASB's *Legislative Notes* newsletter.

Make sure you are the first call when a bill affecting your shared community is considered.

Thanks for sharing your district's story and engaging!

- Call Colby with any questions! -
#liveNASB

INNOVATION

... BOARD LEADERSHIP

Benjamin Franklin once said, "If you fail to plan, you are planning to fail" and Churchill echoed those sentiments by stating, "Those who fail to learn from the past are doomed to repeat it."

Supts/ESU Admins may be adapting to the leadership of a newly elected board president or embarking upon the routine of a new calendar year and modifying the annual board calendar to support 2019. Either way, we know that boards that work and plan collaboratively with the superintendent are leading with purpose and understand the importance of the action and the impact of quality leadership. The NASB Board Leadership department provides a vast array of resources to support the work of the board and administrator. The 2019 NASB Annual Board Calendar is available to our member boards through the website. The annual calendar highlights key dates and responsibilities throughout the year that may be routine and/or require action by the board.

Note: The Board Leadership staff will work collaboratively with the NASB Advocacy team to update the calendar with key dates and information following the Legislative Session to ensure the calendar provides current and accurate information. Once all updates have been added, the calendar will be posted to the website for members to access.

Marcia, Kori & Melissa

VISION

ENGAGEMENT

... WHOLE CHILD

In his first state budget address as Minnesota's Governor, Tim Walz said, "We must meet the needs of the whole child to spur academic growth and opportunity. As a classroom teacher, I know that a student who is hungry won't learn geography, a student who needs glasses can't read the whiteboard, and a student who had to sleep in the car the night before certainly won't ace their math test."

Contact Kori for all things WCP

... TECHNOLOGY

Did you know 7 School Board Associations are utilizing the Association Management software built by Sparq Data Solutions to manage all their members' data and member activities?

This software empowers associations to more effectively communicate with their members.

To find out more ways Sparq is working for and with NASB to provide products and services that benefit Nebraska districts, contact Nicole Kobus at nkobus@nasbonline.org

Follow Sparq on Twitter and Facebook for all the latest updates.

https://twitter.com/sparq_data

<https://www.facebook.com/SparqData>

Board Notes is published on a monthly basis as a member service. Advertising is available in every issue. To advertise or become an Affiliate, please contact Matt Belka for further information. Articles or advertising contained herein do not necessarily represent the views or policies of NASB.

Nebraska Association of School Boards | 1311 Stockwell Street - Lincoln, NE 68502 | Matt Belka, Editor | John Spatz, Publisher

LEADERSHIP

INNOVATION

VISION

ENGAGEMENT

Join NASB, as we travel the state for various workshops, meetings and events throughout the year.
To learn more, and register, visit the Events tab of www.NASBonline.org

<http://members.nasbonline.org/index.php/events>

Call for Proposals for the 2019 State Education Conference: Due March 1

THIS
WEEK!

[HTTPS://NASB.ENVISEAMS.COM/PROPOSALS](https://nasb.enviseams.com/proposals)

President's Retreat | March 3-4 | Lincoln

THIS
WEEK!

NAEP State Convention | March 26-27 | Grand Island

NSBA Annual Conference | March 30 to April 1 | Philadelphia

Spring Legal Workshop | April 16 | Gering

Spring Legal Workshop | April 17 | North Platte

Spring Legal Workshop | April 24 | La Vista

New Board Member Follow-Up Retreat | June 13 | Kearney

NASB Member Golf Outing | June 13 | Kearney

School Law Seminar | June 13-14 | Kearney

NASB Orientation | July 24 | Lincoln

Area Membership Meetings | August & September

AUGUST 20 | VALENTINE AUGUST 21 | FREMONT AUGUST 22 | LA VISTA

AUGUST 26 | GERING AUGUST 27 | NORTH PLATTE AUGUST 28 | KEARNEY

SEPTEMBER 4 | YORK SEPTEMBER 18 | NEBRASKA CITY SEPTEMBER 25 | NORFOLK

Board Presidents: Check your inbox each month for the monthly 'NASB Update' to include in your meeting agenda.
Please contact mbelka@NASBonline.org with any questions.

YOUR NASB BOARD OF DIRECTORS & STAFF



YOUR NASB LEADERSHIP TEAM



Steve Blocher
President
West Point



Stacie Higgins
President-Elect
Nebraska City



Brad Wilkins
Vice President
Ainsworth



Lanny Boswell
Past President
Lincoln

YOUR REGION DIRECTORS



Region 1
Neal Kanel
HTRS



Region 2
Sarah Centineo
Bellevue



Regions 3, 6 & 7
Shavonna Holman
Omaha



Regions 3, 6 & 7
Ricky Smith
Omaha



Regions 3, 6 & 7
Nancy Kratky
Omaha



Regions 4 & 5
Connie Duncan
Lincoln



Regions 4 & 5
Kathy Danek
Lincoln



Region 8
Jay Irwin
Ralston



Region 9
Alan Moore
ESU 3



Region 10
Paul Brune
Heartland



Region 11
Jim Vlach
Lyons-Decatur Northeast



Region 12
Lisa Wagner
Central City



Region 13
Marilyn Bohn
Ravenna



Region 14
Sandy Noffsinger
Dundy County Stratton



Region 15
Barb Svoboda
Mullen



Region 16
Patti Gubbels
Norfolk



Region 17
Richard Dohma
Ponca



Region 18
Kim Burry
Bayard



Region 19
Stacy Jolley
Millard

YOUR NASB STAFF



John Spatz
Executive Director



Shari Becker
Director of Education
Leadership Search Service



Craig Caples
Director of Technology



Marcia Herring
Director of Board Leadership



Kori Stanosheck
Board Leadership
Engagement Associate



Matt Belka
Director of Marketing,
Communications & Advocacy



Dan Clarke
Systems Engineer



Rachel Horstman
Business Manager



Lisa Steinkuhler
Executive Admin. Assistant



Megan Boldt
Director of ALICAP Insurance



Sharon Endorf
Director of
Member Engagement



Jim Luebke
Director of Policy Services



Sallie Svatora
Director of Operations



Colby Coash
Associate Executive Director/
Dir. of Government Relations



Makenzie Brookhouser
ALICAP & Events Manager



Jen Goetz
Accounting/Data Specialist



Melissa Lusk
Board Leadership
Development Associate



Vicki Walter-Winters
Legal Admin. Assistant

LEADERSHIP

INNOVATION

VISION

ENGAGEMENT

ACCOUNTING

Watts and Hershberger, P.C.
Jim Watts - 402-483-7512
jw1cpa@aol.com | www.gowh.com
(CPA, Accounting)

ARCHITECTS

BVH Architecture
Cleve Reeves - 402-475-4551
creeves@bvh.com - www.bvh.com
(Architecture)
*Silver Level Affiliate

CMBA Architects
Brad Kissler - 308-384-4444
kissler.b@cmbaarchitects.com
Jim Brisnehan - 308-384-4444
brisnehan.j@cmbaarchitects.com
Troy Keilig - 308-384-4444
keilig.t@cmbaarchitects.com
www.cmbaarchitects.com
(Architecture, Master Planning,
Interiors, Bond Promotion/
Community Engagement)
* GOLD LEVEL AFFILIATE

Carlson West Povondra Architects
Jamie Eckmann - 402-551-1500
jeckmann@cwparhitects.com
www.cwparhitects.com
(Architecture, planning,
feasibility studies)
* GOLD LEVEL AFFILIATE

DLR Group
Vanessa Schutte - 402-393-4100
vschutte@dlrgroup.com
www.dlrgroup.com
(Architecture, engineering,
Ed. facility planning)

The Schemmer Associates Inc.
Terry Wood, AIA - 402-493-4800
twood@schemmer.com
Molly Macklin - 402-493-4800
mmacklin@schemmer.com
www.schemmer.com
(Architecture, engineering,
educational facility planning)

AWARDS & PLAQUES

Awards Unlimited
Larry King - 402-474-0815
larryking@awardsunlimited.com
www.awardsunlimited.com
(Trophies, awards, plaques, etc.)

BUILDING CONTROLS/ SERVICES

Control Management Inc.
Nathan Haug - 402-571-9454
nathan@cmiomaha.com
www.cmiomaha.com
(Building Automation, Security and
Energy Optimization for New and
Existing Systems)

Duro-Last Roofing
Mark Akagi - 785-232-6563
mark@morrisgrup.com
www.duro-last.com
(Representative for Duro-Last
roofing system)

CONSTRUCTION SERVICES

BD Construction
Marsha Wilkerson - 308-234-1836
mwilkerson@bdconstruction.com
www.BDconstruction.com
(Site Selection, Facility Planning,
Engineering, Permitting,
Build to Suit)
*GOLD LEVEL AFFILIATE

Boyd Jones Construction
Emily Bannick - 402-550-1808
ebannick@boydjones.biz
www.boydjones.biz
(Construction Management, Pre-
Bond, Pre-Construction, Facility
Evaluation, Early Stage Planning)
* GOLD LEVEL AFFILIATE

Cheever Construction
Douglas Klute - 402-477-6745
dklute@cheeverconstruction.com
www.cheeverconstruction.com
(Construction Services)

Heartland Pella Windows & Doors
Dennis Feeken - 800-334-2271
dennisfeeken@heartlandpella.com
www.heartlandpella.com
(Commercial Window & Door
Solutions)

ENERGY SERVICES

Ameresco, Inc.
David Goebel - 308-392-3283
402-370-8822
dgoebel@ameresco.com
www.ameresco.com
(Capital Improvements, Energy
Efficiency & Renewable Energy
Solutions for Buildings)
* GOLD LEVEL AFFILIATE

ENERGY SERVICES

CTS Group
Randy Harrick - 402-680-6390
rherrick@ctsgroup.com
www.ctsgroup.com
(Provides safe, secure learning and
working environments)
* GOLD LEVEL AFFILIATE

Johnson Controls
Jason Peck - 308-708-9479
jason.peck@jci.com - www.jci.com
(HVAC, Building Automation,
Service Agreements, Security and
Fire, among others)
* GOLD LEVEL AFFILIATE

TRANE
Dave Raymond
402-331-7111 - 402-452-7762
dave.raymond@trane.com
www.trane.com/omaha
(Building Construction &
Energy Services)
* GOLD LEVEL AFFILIATE

EQUIPMENT AND FURNITURE

Sheppard's Business Interiors
Ken Sigmon - 402-393-8888
ksigmon@sbi-omaha.com
www.sbi-omaha.com
(Furniture, Space Planning, Asset
Management)

FINANCIAL SERVICES

Ameritas Investment Corp.
Jay Spearman
jspearman@ameritas.com
Scott Keene
skeene@ameritas.com
Brad Slaughter
bslaughter@ameritas.com
Marc Munford
mmunford@ameritas.com
Bruce Lefler
blefler@amertias.com
Dallas Watkins
dallas.watkins@ameritas.com
800-700-2362 - 402-384-8088
(Bonds, Refunding Bonds,
QCPUF Bonds, TANs,
NASB Lease-Purchase)
* GOLD LEVEL AFFILIATE

FINANCIAL SERVICES

D.A. Davidson & Co.
Paul Grieger - 402-392-7986
pgrieger@dadco.com
Cody Wickham - 402-392-7989
cwickham@dadco.com
Andy Forney - 402-392-7988
aforney@dadco.com
www.dadavidson.com
(Bonds/Election Services, Lease
Purchase)
* GOLD LEVEL AFFILIATE

First National Capital Markets
Tobin Buchanan - 308-352-8328
tbuchanan@fnni.com
www.fncapitalmarkets.com
(Public Finance, Election Guidance)
* GOLD LEVEL AFFILIATE

First Nebraska Credit Union
Elly Heckel - 402-492-9100
marketing@firstnebraska.org
www.firstnebraska.org
(Taking care of your
financial needs!)

Nebraska Liquid Asset Fund - NLAFF
Barry Ballou - 402-705-0350
balloub@pfm.com
www.NLAFFpool.org
(Liquid Asset Fund,
financing programs)
* GOLD LEVEL AFFILIATE

Nebraska Public Agency
Investment Trust
Becky Ferguson - 402-323-1334
becky.ferguson@ubt.com
www.npait.com
(Cash management tool for
short-term and long-term funds)
* GOLD LEVEL AFFILIATE

Union Bank & Trust
Health Benefit Solutions
Jennifer Ainsworth - 402-323-1815
jennifer.ainsworth@ubt.com
www.ubt.com/health
(Financial Services, Banking)
* Silver Level Affiliate

Wells Fargo Bank
Andrew J. Detlefsen - 402-434-6701
andrew.j.detlefsen@wellsfargo.com
www.wellsfargo.com
(Financial Services, Banking)

NASB AFFILIATES

LEADERSHIP

FOOD SERVICE

Lunchtime Solutions
Deni Winter
605-235-0939 Ext 106
deni@lunchtimesolutions.com
www.lunchtimesolutions.com
(Progressive Food
Service Management)
* GOLD LEVEL AFFILIATE

Opaa! Food Management of Nebraska
Greg Frost - 636-812-0777
www.opaafood.com
(Contract Food Service
Management)

Taher, Inc. - Food Service Management
Tom Johnson - 952-945-0505
t.johnson@taher.com
www.taher.com
(Providing a fresh take on Food
Service Management)
* GOLD LEVEL AFFILIATE

INSURANCE SERVICES

Blue Cross Blue Shield of Nebraska
Courtney Ray - 402-458-4823
courtney.ray@nebraskablue.com
www.nebraskablue.com
(Group health insurance)
* GOLD LEVEL AFFILIATE

National Insurance Services
Steve Ott - 800-627-3660
sott@nisbenefits.com
www.nisbenefits.com
(Group LTD, Life, Vision,
Special Pay Plans, HRA's)

Public Risk Management
Sheri Shonka
402-884-3751 - 877-649-4612
sheri.shonka@prmne.com
www.alicap.org
(ALICAP, Insurance services)
* GOLD LEVEL AFFILIATE

LEGAL SERVICES

Mueller Robak, LLC
William Mueller - 402-434-3399
mueller@muellerrobak.com -
(Lobby firm)

INNOVATION

MECHANICAL CONSTRUCTION

Rasmussen Mechanical Services
Jennifer Coggins - 712-323-0514
jennifer.coggins@rasmech.com
www.rasmech.com
(Your Single Source Service
Provider)

MENTORING

TeamMates Mentoring
Hannah Miller - 319-610-8538
hannah@teammates.org
www.teammates.org
(Together we transform lives)
* GOLD LEVEL AFFILIATE

PLAYGROUND/ SCOREBOARDS/ SURFACING

Creative Sites, LLC
Julie Kutilek
402-614-4606 - 800-266-1250
julie@creativesitesllc.com
(Playground equipment and
site furnishings)
* GOLD LEVEL AFFILIATE

Crouch Recreation
Eric Crouch - 402-496-2669
eric@crouchrec.com
www.crouchrec.com
(Playgrounds, Shelters, Scoreboards,
Safety Surfacing & Site Amenities
Manufacturers Rep)
* GOLD LEVEL AFFILIATE

SAFETY & SECURITY SERVICES

One Source
The Background Check Company
Neal Josten
800-608-3645 ext. 5600
njosten@onesourcebackground.com
www.onesourcebackground.com
(Employment, Volunteer,
Contractor Screening)
* GOLD LEVEL AFFILIATE

VideoTronix Inc.
David Harvey - 402-210-2839
david.harvey@vtisecurity.com
www.vtisecurity.com
(IP Video Surveillance, Networks,
Access Control, Storage)

VISION

STUDENT INFORMATION SERVICES

JMC Computer Services
Paul Freid - 651-345-4654
Paul@jmcinc.com
www.jmcinc.com
(Easy ADVISOR reporting and
student information management)
* GOLD LEVEL AFFILIATE

TECHNOLOGY CONSULTING

PRISM advisors
Jason Richards - 402-593-8911
jprichards@prism-advisors.com
www.prism-advisors.com
(PEOPLE, PROCESS & SYSTEMS.
IT strategic planning and project
management through RFP to
implementation)
* GOLD LEVEL AFFILIATE

TECHNOLOGY/ SOFTWARE

Sparq Data Solutions
Craig Caples - 402-423-4951
ccaples@sparqdata.com
www.sparqdata.com
(Paperless Board Meetings, Teacher
Negotiations, Public Document
Management, Document Imaging &
Scanning)
* GOLD LEVEL AFFILIATE

THERAPY SERVICES

Central Nebraska
Rehabilitation Services
Mary Walsh-Sterup
308-675-1853 ext. 3222
mary@cnrehab.com
www.cnrehab.com
(Providing PT, OT and Speech
therapy in the school system)

TRANSPORTATION

Body Worx Inc.
Josh Goodbrake - 308-293-3109
josh.bodyworx@gmail.com
www.bodyworxrepair.com
(Commercial Vehicle Collision
Center Specializing in School
Busses and Motor Coaches)
*Silver Level Affiliate

ENGAGEMENT





1311 STOCKWELL STREET
LINCOLN, NE 68502
WWW.NASBONLINE.ORG

RETURN SERVICE REQUESTED



NASB BOARD NOTES

A monthly publication from the Nebraska Association of School Boards



LEADERSHIP

INNOVATION

VISION

ENGAGEMENT

IN THIS EDITION

CALL TO ACTION: SPENDING IS NOT THE PROBLEM
BAYARD IS IN A CLASS OF ITS OWN
CALL FOR STATE CONFERENCE PROPOSALS!
NASB'S ANNUAL MEMBERSHIP DRIVE UNDERWAY
BANNER COUNTY SCHOOL BOARD APPROVES 4-DAY WEEK
PHILLY, HERE WE COME: NEBRASKA RECEPTION
NATIONAL SCHOOL BREAKFAST WEEK: START YOUR ENGINES!
TRAINING, NETWORKING, ENGAGEMENT & EVENTS
YOUR NASB BOARD OF DIRECTORS & STAFF
... AND MUCH MORE!

AS WELL AS "THIS MONTH IN ..."

... ADVOCACY & GOVERNMENT RELATIONS
... ALICAP & INSURANCE
... BOARD LEADERSHIP
... ENERGY PURCHASING
... MEMBER ENGAGEMENT
... NEBRASKA WHOLE CHILD PROJECT
... POLICY
... SEARCH & STRENGTHS
... TECHNOLOGY