



LEADERSHIP

INNOVATION

VISION

ENGAGEMENT



LIC: MIGHTY BUT MIGHTY

If last year's Legislative Issues Conference was deemed "Small But Mighty" as a snowstorm kept the majority of the attendees away, this year's version could definitely be deemed "Mighty But Mighty".

With one of the largest crowds in recent memory, as well as one of the highest turnouts of Senators, this year's Conference was filled with engagement, education, networking, and preparing our members for what is to come as the remainder of this Legislative Session plays itself out.

Speakers included a Sunday evening presentation from former Gering school board member, Senator John Stinner, who stressed how important local decisions are by telling the audience, "You make a difference in your schools. You make a difference in your communities. You make a difference in this state."

Monday kicked off with an explanation of bills NASB will be focused on this Session from Director of Government Relations, Colby Coash. Following Colby was Senator Matt Williams of Gothenburg who stated that he believes the most important thing Nebraska grows, is our kids brains.

Senator Brett Lindstrom of Omaha was up next to break down the various tax bills the Revenue Committee will see this Session, and which concepts from each have a chance to advance.

Senator Mike Groene of North Platte spoke next, mentioning the task ahead for this Education Committee with a limited number of days for committee hearings, and a large number of bills.

Following Senator Groene, was another former school board member, Speaker Jim Scheer from Norfolk, who presented a special resolution, signed by all 10 of the current Senators who once served on their local school boards, honoring School Board Member Week in Nebraska, and the work that our 1,700 locally elected school board and ESU members do daily for their districts, communities

CONTINUED ON PAGE 2

JANUARY 2019

UPCOMING EVENTS

SCHOOL BOARD MEMBER WEEK
January 27 to February 2

BUDGET & FINANCE WORKSHOP
February 13 | La Vista
February 20 | North Platte

PRESIDENT'S RETREAT
February 17-18 | Kearney
February 24-25 | Lincoln

NAEP STATE CONVENTION
March 26-27 | Grand Island

NSBA ANNUAL CONFERENCE
March 30 - April 1 | Philadelphia

SPRING LEGAL WORKSHOPS
April 16 | Gering
April 17 | North Platte
April 24 | La Vista



CONTINUED FROM PAGE 1

and all of Nebraska. (To view or download the proclamation, visit the School Board Member Week page on NASB's Government Relations section of www.NASBonline.org)

Next up, Vice Chair of the Education Committee, Senator Lynne Walz, opened stating "You have a job that is thankless at times, but know that your work is very important." She then went on to discuss the importance of the amount of pro-education legislation that has been introduced by NASB and all of the other education partners this session that invest in education.

Senators Anna Wishart and Adam Morfeld wrapped up the morning expanding upon the bills introduced that invest in education, and took questions from the audience.

As always, the Legislative Issues Conference concluded with the Lunch with Senators, with nearly all 49 Senators in attendance.

We thank everyone, from School Board Members, to Administrators, to the Senators and their staff for helping making this event such a success.

If the engagement at the Conference was any indication, this will be an active session, where school board members will not be shy in sharing their story, and having their voice heard throughout the Capitol.



LEADERSHIP

INNOVATION

VISION

ENGAGEMENT

ONE HUNDRED SIXTH LEGISLATURE
FIRST SESSION

LEGISLATIVE RESOLUTION 10

Introduced by Scheer, 19; Briese, 41; Erdman, 47; Gragert, 40; Hughes, 44;
Kolterman, 24; Murman, 38; Stinner, 48; Vargas, 7; Wayne, 13.
(All former school board members)

WHEREAS, seventeen hundred locally elected Nebraska citizens currently volunteer their time to serve on local public school boards throughout the state, representing two hundred and forty-four school districts, seventeen educational service units, and three hundred and twenty-three thousand students; and

WHEREAS, members of various ages, races, and backgrounds represent one Nebraska, which encourages and strengthens school districts, communities, and the state by supporting great teaching and student achievement; and

WHEREAS, through leadership, innovation, and engagement, school board members are challenged to bring their communities to consensus on a vision for schools and use that vision to meet the current and future needs of our children; and

WHEREAS, the local public school board is a uniquely American institution that has made public schools flexible, responsible, and accountable to the needs of our communities, our state, and our nation while furthering the American ideal of representative government; and

WHEREAS, school board members serve first and foremost as trustees for our children; and

WHEREAS, all Nebraskans should recognize and acknowledge the significant contributions made by our locally elected school board members, who work to ensure the delivery of quality education for our children.

NOW, THEREFORE, BE IT RESOLVED BY THE MEMBERS OF THE ONE HUNDRED SIXTH LEGISLATURE OF NEBRASKA, FIRST SESSION:

That the Legislature appreciates the hard work of school board members across the state.

That the Legislature encourages Nebraskans to acknowledge and thank school board members for their work and dedication.



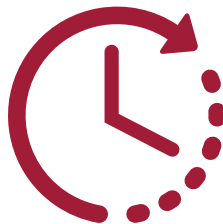


TotalCheck

Often imitated, but never duplicated, One Source and its TotalCheck packages give you the most complete background information available along with education to empower you to make the right decisions. One Source is your collaborative partner to help you make confident hiring decisions.



Real-Time, Original Source Records. We use original source records, giving you the most accurate information possible.



Fast Turnaround Time. Reports have an average return rate of 48 hours, so you can make timely hiring decisions.



Accredited. We are an NAPBS accredited Consumer Reporting Agency and are committed to delivering the highest industry standards.



Contact us today for background screening customized to fit your unique needs!
800.608.3645 ext.5600 njosten@onesourcebackground.com onesourcebackground.com

NASB IN D. C. - ADVOCACY, EQUITY & THE HILL

NASB
Nebraska Association of
SCHOOL BOARDS

LEADERSHIP

INNOVATION

VISION

ENGAGEMENT

While the majority of us were in Lincoln for the Legislative Issues Conference, several Nebraska school board members, Commissioner Matt Blomstedt and members of the NASB staff were in Washington, D.C. at the NSBA Advocacy Institute for a few days of advocacy, equity and a day on The Hill speaking to our federal representatives.



LEADERSHIP



REGIONS 3, 6 & 7
Kimara Snipe
Omaha Public Schools
Served local board since 2019



REGION 12
Lisa Wagner
Central City Public Schools
Served local board since 2009



REGION 15
Barb Svoboda
Mullen Public Schools
Served local board since 2009

LEADERSHIP

INNOVATION

As NASB moves into its second century serving school boards and ESUs across Nebraska, we continue to come back to the word invest.

There is no greater legacy we can give our children than a quality education. An education that challenges our kids and prepares them to be productive adults.

An education we are proud to invest in.

School boards have a vital role in supporting those efforts, and NASB is here, committed to supporting the 1,700 locally elected school board and ESU members serving our state, in whatever they may need.

We are working daily to provide you the money-saving programs and information-sharing services you need to thrive. We are shaping a strategic vision to develop a long-term sustainable system of funding public education. We are creating the tools and building the partnerships for local school boards to be the educational leaders in their community.

For the past few years, you've seen the data on school spending (or is it the dollars we invest into our schools), and the over-reliance on our property taxes to fund education. You've seen the focus NASB has put on the property tax issue engaging leaders inside and outside of education circles to bring property tax relief and to protect our schools.

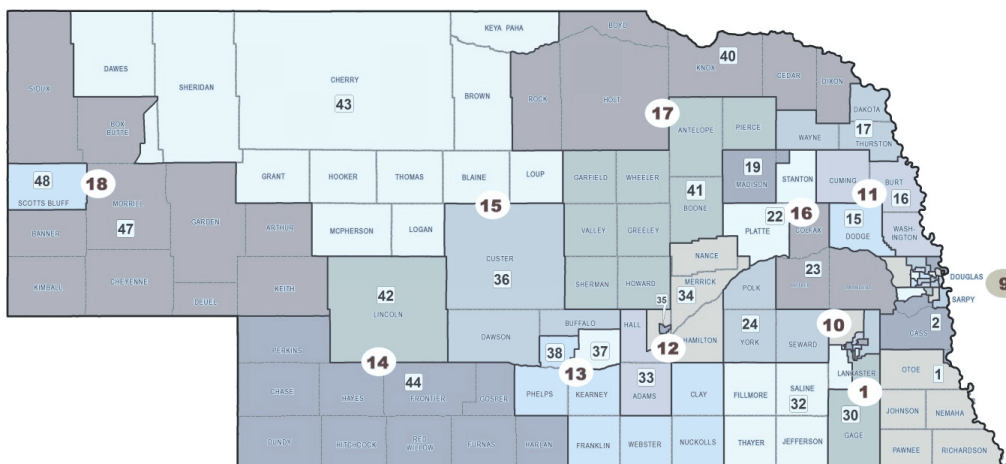
Over the next few weeks, you will be receiving more information and ideas so you and your Board can continue to utilize all of the resources, programs, services, and networking opportunities your NASB membership provides.

Your membership grants you access to all of the resources NASB provides and allows your collaborative thinking and partnerships to continually enhance and build upon where we currently are, and have the power to go. We appreciate the opportunity to work with you every day, as we all aim to keep public education strong across Nebraska.

School boards across Nebraska are leaders. Leaders with a strong voice. What better way to continue to use that voice than by investing in our children's future. It is time to be proactive, and have fun doing it.

WATCH YOUR MAILBOX FOR MEMBERSHIP DRIVE INFO SOON!

Ⓢ Numbers in circle denote director regions Ⓢ Numbers in squares denote legislative districts



A PRODUCTIVE LEADERSHIP TEAM

LEADERSHIP

INNOVATION

VISION

ENGAGEMENT

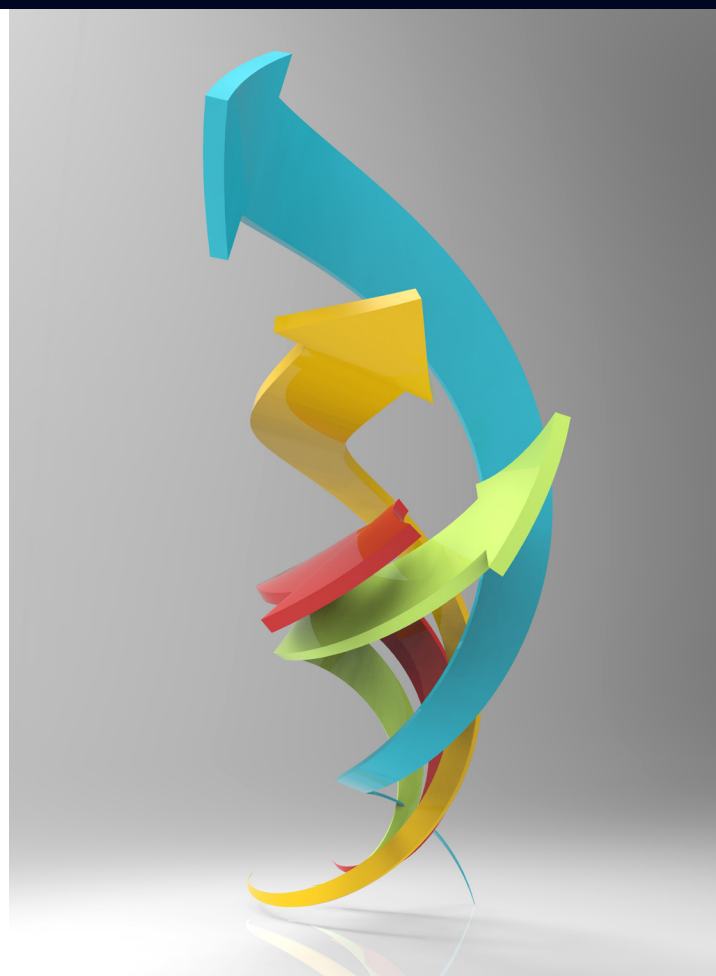
Effective communication between the board and superintendent/ESU Administrator is an important component in the success of the leadership team. Creating and sustaining a working partnership built upon honesty, transparency, and trust can only be developed when there is a clear understanding of the roles and expectations of the superintendent/ESU Administrator and board members.

To ensure the development of an effective working relationship between the Superintendent/ESU Administrator and sitting board members, NASB advocates for an organized orientation of newly elected or appointed board members. When a new member joins the governance team, it is important to engage the individual in the discussion of the roles and responsibilities of the board as well as the review of district/ESU protocol, procedures, and relative information. Studies confirm that establishing a positive working relationship is key to the effectiveness of administrative-board relations and may accelerate the growth and quality of the working relationship. The investment of time in the orientation aids in the framework of a productive leadership team.

NEW BOARD MEMBER ORIENTATION

The District/ESU Orientation may include, but should not be limited to the review of:

- board/district/ESU mission/vision/belief statements
- district/ESU short and long-range goals
- Code of Conduct for board members and conflict of interest criteria
- board policy manual or access to online policies, administrative guidelines, and all handbooks (e.g., student, staff, activities, etc.)
- board committee structure and appointments
- authority and responsibilities of the board, superintendent, administrators, and individual board members
- district/ESU grievance process and procedures (i.e., public, staff, student, etc.)
- Annual Board Calendar and district/ESU calendar of events
- board processes, including board meeting procedures, agenda preparation, and policy development and review
- communications, including use of email and communicating with the media
- superintendent/ESU Administrator contract including: evaluation tool, job description, salary and benefit package details
- minutes from the past year board meetings and workshops
- geographic boundaries of the district/educational service unit as well as ward boundaries if applicable
- NASB board development opportunities (event calendar provided on the Association website) and the individual's login information for access to the components of the website
- board member, superintendent/ESU administrator, and administrative assistant contact information



Establish dates and times for the orientation meetings to apportion the appropriate time for reviewing board protocol and procedures, board and superintendent/ESU administrator processes, and the district/ESU information. For a complete orientation plan, visit www.NASBOnline.org to download NASB's Orientation for New Board Members.

APPOINT A BOARD MENTOR

The board may wish to consider providing the newly elected board member with a mentor. New board members will appreciate the guidance of the mentor and benefit from the working knowledge the mentor can share regarding the board, district/ESU, and climate of the working relationship between the board and administrative leadership team. Sharing this working knowledge is information the new board member would not otherwise find in an orientation document, policy or a board workshop.

*For more information on a Board Mentor Program contact Marcia Herring at mherring@NASBOnline.org or you may obtain a copy of *Mentoring New Board Members*, under the 'News & Resources' tab of the NASB website, which provides a defined process and criteria for developing an effective mentor program.*



This is a great time to begin a Board Policy Manual Customization to give your board and administrators a much more accurate, complete and user-friendly Policy Manual for the start of the next school year. The goal of the NASB Policy Customization Service is to create a completed, customized policy manual (in hard copies and electronic format) with legal referencing and indexing that reflects in writing how your individual district actually operates.

We will evaluate a district's existing board policy manual, check for consistency and provide your board with a "road map" of expectations for the governance of your district. Your district has its own unique history and, over the years, has chosen to make different operating decisions than your neighboring districts. We will rewrite your existing board policy manual, keeping the decisions of your board in place, not throwing them out to be replaced by a generic set of policies.

Through this process we will be able to highlight the areas that are presently omitted and add the policies that most experienced boards and administrators believe are necessary for setting out the basic expectations for the operation and governance of your district. When these new policies are brought into your reorganized and updated manual, they are reviewed with your administrators and board policy committee to ensure the language and intent is appropriate to your local needs.

NASB wants your policies to be clearly written and easily understood by the people using them. Many Board Policy Manuals contain policies that are overly detailed, redundant, and confusing. If your School Board is using a Policy Manual that is disorganized, poorly written and difficult to understand, our manual customization process can correct that for you. This is a time intensive process on our part, but the result is to make your manual easier to use, clearer to follow, and simpler to update in future years.

FOR MORE INFORMATION:

Jim Luebbe

Director of Policy Services

800-422-4572

jluebbe@NASBOnline.org

FEBRUARY EVENTS

LEADERSHIP

INNOVATION

VISION

ENGAGEMENT

BUDGET & FINANCE WORKSHOPS


FEBRUARY 13 | ESU 3 - LA VISTA

FEBRUARY 20 | HOLIDAY INN EXPRESS - NORTH PLATTE

"An investment in knowledge pays the best interest." --Benjamin Franklin

School finance is a complex task. The Leadership Team, comprised of both the board and Superintendent/ESU Administrator is responsible for managing the finances within their district/ESU. This evening workshop will feature superintendents Carl Dietz and Matt Fisher, two school finance experts, who will share their experiences in:

- Overview of individual school funds and approved uses for those funds
- Understanding the building of a budget
- How to share budget & finance information with the community
- Learning how Special Education affects a budget
- TEEOSA Formula 101
- Negotiations - what can be negotiated & what to expect
- Cash reserves
- Tax receipts by month
- Making Sense out of your Annual Financial Report



NASB
Nebraska Association of
SCHOOL BOARDS

Board Presidents, and those who aspire to be President are invited to attend the annual NASB President's Retreat

"BOARD PRESIDENT - PURPOSEFUL LEADERSHIP"

February 17-18, 2019
Kearney Holiday Inn
Register by February 11

February 24-25, 2019
NASB Offices - Lincoln
Register by February 18

Registrations will be limited to the first 24 attendees per location. Register today by visiting www.NASBonline.org and logging in with your email and password.

Sunday | 5:30 PM - Social, Dinner & Training
Monday | 7:30 AM to 3:00 PM - President Training

Cost: \$150
15 Awards of Achievement Points

"Successful leadership is defined by RELATIONSHIPS and RESULTS."
- Stephen Covey

... SEARCH & STRENGTHS

NASB has filled the following Superintendent positions.
Ainsworth - Gothenburg - Crofton

The application deadline for Freeman has recently passed. Their board will be selecting candidates in the next couple of weeks.

**ESU #13, Garden County and Norris
superintendent/ESU Administrator application
deadlines are coming soon!**

New superintendent searches posted include:
Auburn - Maxwell - Sandhills - Winside - York

Learn more at www.NASBsuptsearch.org

Contact Shari to schedule a Gallup board session!

-Shari -

... POLICY

One of the most important duties of school board members is to pay close attention to the academic achievement of your students.

The Nebraska Department of Education has recently released state test scores for the 2018 school year and all scores are posted on the NDE website. While it may be tough to make sense of the raw test scores since the tests have been changing from year to year, it is worthwhile comparing your district scores with other districts of comparable size taking into consideration such factors as mobility, percentage of free and reduced lunches, and other data also available on the website to better understand your student academic achievement results.

Contact Jim to learn more!

... MEMBER ENGAGEMENT

January visits: Central Valley, Ord, Arcadia & Loup City!

2019 State Conference breakout session proposals will open soon.

- Sharon -



Paul Grieger
(800) 528-5145
pgrieger@dadco.com



Cody Wickham
(866) 809-5596
cwickham@dadco.com



Andy Forney
(866) 809-5443
aforney@dadco.com

Building a better future with Nebraska's Public Finance Partner

D.A. Davidson & Co. has long been a leader in innovative debt financing for school districts. What we're most proud of are the relationships we've nourished and the strong community improvements that are made as a result.

Our public finance professionals take a personal interest and a hands-on approach, carrying our deals from start to finish. Because you deserve solutions tailored to fit you.

- Tax Anticipation / Construction Notes
- Bond Underwriting Services
- Lease-Purchase Financing
- QCPUF Bonds



D | A | DAVIDSON

450 Regency Parkway, Suite 400 | Omaha, NE 68114
dadavidson.com | D.A. Davidson & Co. member FINRA and SIPC

... ENERGY PURCHASING

Natural gas prices have been very volatile this winter due to cold weather and a relatively low storage volume carried through the Fall months. Our NJUMP and CJUMP Interlocal gas purchasing program members were well equipped for this situation due to the advance purchase of gas obtained at very favorable prices several times in the past 12 months.

Contact Jim to learn more!

Board Notes is published on a monthly basis as a member service. Advertising is available in every issue. To advertise or become an Affiliate, please contact Matt Belka for further information. Articles or advertising contained herein do not necessarily represent the views or policies of NASB.

Nebraska Association of School Boards
1311 Stockwell Street - Lincoln, NE 68502
Matt Belka, Editor | John Spatz, Publisher

LEADERSHIP

INNOVATION

VISION

ENGAGEMENT

... ALICAP & INSURANCE

ALICAP's January Safety Topic is Basic Classroom Safety.

ALICAP encourages members to consider assigning a SafeSchools online safety training course to the appropriate staff.

Thanks, Megan!

... ADVOCACY & GOVERNMENT RELATIONS

Bills have been introduced.
(755 items to be exact)
(NASB is following around 100)

Hearings are starting to be scheduled.

Keep up on everything happening through NASB's *Bills* page under the *Government Relations* section of the NASB website, through our quick videos on social media, and through NASB's *Legislative Notes* newsletter.

NASB is here to help you position yourself as the expert in the education of students you share with your Senator(s).

Make sure you are the first call when a bill affecting your shared community is considered. Thanks for sharing your district's story and engaging!

Continue to stay engaged., continue to share your data and your stories!

- Call Colby with any questions! -

#liveNASB

... TECHNOLOGY

Welcome to our new Sparq Meetings subscribers!
Mullen Public Schools - Malcolm Public Schools - NRCSA - Saline County

Sparq has released new features including the ability to format the look of the agenda item title text enhancing the look and feel of the minutes and agendas, expanded its Strategic Planning tools, and the ability to track the progress of each individual goal through the Percent Complete field in the Goals section.

DID YOU KNOW?

After your district has settled you can use the Negotiations software to print your teacher contracts.

To find out how your school district can take advantage of Sparq services contact Nicole Kobus at nkobus@nasbonline.org



... BOARD LEADERSHIP

The orientation of newly elected or appointed board members supports the development and effectiveness of the leadership team. NASB developed the orientation process to assist and equip boards and administrators to provide an organized approach. This is an abbreviated checklist the board may wish to use for the first meeting, and we advocate for you to align the discussion to board policy.
(Note: *Refer to applicable policy as noted in italics.*)

Begin by reviewing:

- Response to community concerns (*Chain of Command*)
- Conduct during Public Comment in Board Meetings (*Public Comment*)
- Board governance vs. superintendent/ESU Administrator leadership (*Superintendent/ESU Administrator Job Description*)
- (No) Authority as an individual board member (*Board policies*)
- Protocol and procedures of board meetings (*Board policies*)
- Follow the Nebraska Open Meetings Law (*Board policies*)
- Purpose and fiduciary responsibility of the board (*student achievement accountability*)

Reference NDE Rules and Regulations, district/ESU protocols and procedures, and board policy

- Methods for monitoring and measuring academic accountability (*student achievement accountability and accreditation*)

Marcia, Kori & Melissa

NASB TRAINING, NETWORKING, ENGAGEMENT & EVENTS

LEADERSHIP

INNOVATION

VISION

ENGAGEMENT

Join NASB, as we travel the state for various workshops, meetings and events throughout the year.
To learn more, and register, visit the Events tab of www.NASBonline.org

<http://members.nasbonline.org/index.php/events>

106th Legislature, 1st Session began Wednesday, January 9

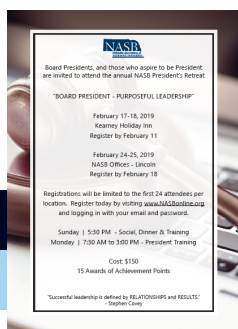
School Board Member Week | January 27 to February 2



Budget & Finance Workshop | February 13 | La Vista
Budget & Finance Workshop | February 20 | North Platte



To register for an NASB event, click on the 'My Membership' link, then navigate to the 'Events' dropdown and select 'Register'. If you do not have an email and password to log in or have forgotten it, please contact NASB at 800-422-4572 for assistance.



President's Retreat | February 17-18 | Kearney
President's Retreat | February 24-25 | Lincoln

NAEP State Convention | March 26-27 | Grand Island

NSBA Annual Conference | March 30 to April 1 | Philadelphia

Spring Legal Workshop | April 16 | Gering
Spring Legal Workshop | April 17 | North Platte
Spring Legal Workshop | April 24 | La Vista

Board Presidents: Check your inbox each month for the monthly 'NASB Update' to include in your meeting agenda.
Please contact mbelka@NASBonline.org with any questions.

YOUR NASB BOARD OF DIRECTORS & STAFF



YOUR NASB LEADERSHIP TEAM



Steve Blocher
President
West Point



Stacie Higgins
President-Elect
Nebraska City



Brad Wilkins
Vice President
Ainsworth



Lanny Boswell
Past President
Lincoln

YOUR REGION DIRECTORS



Region 1
Neal Kanel
HTRS



Region 2
Sarah Centineo
Bellevue



Regions 3, 6 & 7
Shavonna Holman
Omaha



Regions 3, 6 & 7
Ricky Smith
Omaha



Regions 3, 6 & 7
Kimara Snipe
Omaha



Regions 4 & 5
Connie Duncan
Lincoln



Regions 4 & 5
Kathy Danek
Lincoln



Region 8
Jay Irwin
Ralston



Region 9
Alan Moore
ESU 3



Region 10
Paul Brune
Heartland



Region 11
Jim Vlach
Lyons-Decatur Northeast



Region 12
Lisa Wagner
Central City



Region 13
Marilyn Bohn
Ravenna



Region 14
Sandy Noffsinger
Dundy County Stratton



Region 15
Barb Svoboda
Mullen



Region 16
Patti Gubbels
Norfolk



Region 17
Richard Dohma
Ponca



Region 18
Kim Burry
Bayard



Region 19
Stacy Jolley
Millard

YOUR NASB STAFF



John Spatz
Executive Director



Shari Becker
Director of Education
Leadership Search Service



Craig Caples
Director of Technology



Marcia Herring
Director of Board Leadership



Kori Stanosheck
Board Leadership
Engagement Associate



Matt Belka
Director of Marketing,
Communications & Advocacy



Dan Clarke
Systems Engineer



Rachel Horstman
Business Manager



Lisa Steinkuhler
Executive Admin. Assistant



Megan Boldt
Director of ALICAP Insurance



Sharon Endorf
Director of
Member Engagement



Jim Luebke
Director of Policy Services



Sallie Svatora
Director of Operations



Colby Coash
Associate Executive Director/
Dir. of Government Relations



Makenzie Brookhouser
ALICAP & Events Manager



Jen Goetz
Accounting/Data Specialist



Melissa Lusk
Board Leadership
Development Associate



Vicki Walter-Winters
Legal Admin. Assistant

LEADERSHIP	INNOVATION	VISION	ENGAGEMENT
ACCOUNTING	BUILDING CONTROLS/SERVICES	ENERGY SERVICES	
Watts and Hershberger, P.C. Jim Watts - 402-483-7512 jw1cpa@aol.com www.gowh.com (CPA, Accounting)	Control Management Inc. Nathan Haug - 402-571-9454 nathan@cmioma.com - www.cmioma.com (Building Automation, Security and Energy Optimization for New and Existing Systems)	CTS Group Randy Harrick - 402-680-6390 rherrick@ctsgroup.com - www.ctsgroup.com (Provides safe, secure learning and working environments) * GOLD LEVEL AFFILIATE	
ARCHITECTS	Duro-Last Roofing Mark Akagi - 785-232-6563 mark@morrisgrup.com - www.duro-last.com (Representative for Duro-Last roofing system)	Johnson Controls Jason Peck - 308-708-9479 jason.peck@jci.com - www.jci.com (HVAC, Building Automation, Service Agreements, Security and Fire, among others) * GOLD LEVEL AFFILIATE	
BVH Architecture Cleve Reeves - 402-475-4551 creeves@bvh.com - www.bvh.com (Architecture) *Silver Level Affiliate	CONSTRUCTION SERVICES	TRANE Dave Raymond - 402-331-7111 - 402-452-7762 dave.raymond@trane.com www.trane.com/omaha (Building Construction & Energy Services) * GOLD LEVEL AFFILIATE	
CMBA Architects Brad Kissler - 308-384-4444 kissler.b@cmbaarchitects.com Jim Brisnehan - 308-384-4444 brisnehan.j@cmbaarchitects.com Troy Keilig - 308-384-4444 keilig.t@cmbaarchitects.com www.cmbaarchitects.com (Architecture, Master Planning, Interiors, Bond Promotion/Community Engagement) * GOLD LEVEL AFFILIATE	BD Construction Marsha Wilkerson - 308-234-1836 mwilkerson@bdconstruction.com www.BDconstruction.com (Site Selection, Facility Planning, Engineering, Permitting, Build to Suit) *GOLD LEVEL AFFILIATE	EQUIPMENT AND FURNITURE	
Carlson West Povondra Architects Jamie Eckmann - 402-551-1500 jeckmann@cwparhitects.com www.cwparhitects.com (Architecture, planning, feasibility studies) * GOLD LEVEL AFFILIATE	Boyd Jones Construction Emily Bannick - 402-550-1808 ebannick@boydjones.biz - www.boydjones.biz (Construction Management, Pre-Bond, Pre-Construction, Facility Evaluation, Early Stage Planning) * GOLD LEVEL AFFILIATE	Sheppard's Business Interiors Ken Sigmon - 402-393-8888 ksigmon@sbi-omaha.com www.sbi-omaha.com (Furniture, Space Planning, Asset Management)	
DLR Group Vanessa Schutte - 402-393-4100 vschutte@dlrgroup.com - www.dlrgroup.com (Architecture, engineering, Ed. facility planning)	Cheever Construction Douglas Klute - 402-477-6745 dklute@cheeverconstruction.com www.cheeverconstruction.com (Construction Services)	FINANCIAL SERVICES	
The Schemmer Associates Inc. Terry Wood, AIA - 402-493-4800 twood@schemmer.com Molly Macklin - 402-493-4800 mmacklin@schemmer.com www.schemmer.com (Architecture, engineering, educational facility planning)	Heartland Pella Windows & Doors Dennis Feeken - 800-334-2271 dennisfeeken@heartlandpella.com www.heartlandpella.com (Commercial Window & Door Solutions)	Ameritas Investment Corp. Jay Spearman - jspearman@ameritas.com Scott Keene - skeene@ameritas.com Brad Slaughter - bslaughter@ameritas.com Marc Munford - mmunford@ameritas.com Bruce Lefler - blefler@ameritas.com Dallas Watkins - dallas.watkins@ameritas.com 800-700-2362 - 402-384-8088 (Bonds, Refunding Bonds, QCPUF Bonds, TANS, NASB Lease-Purchase) * GOLD LEVEL AFFILIATE	
AWARDS & PLAQUES	ENERGY SERVICES		
Awards Unlimited Larry King - 402-474-0815 larryking@awardsunlimited.com www.awardsunlimited.com (Trophies, awards, plaques, etc.)	Ameresco, Inc. David Goebel - 308-392-3283 - 402-370-8822 dgoebel@ameresco.com - www.ameresco.com (Capital Improvements, Energy Efficiency & Renewable Energy Solutions for Buildings) * GOLD LEVEL AFFILIATE	D.A. Davidson & Co. Paul Grieger - 402-392-7986 pgrieger@dadco.com Cody Wickham - 402-392-7989 cwickham@dadco.com Andy Forney - 402-392-7988 aforney@dadco.com www.dadavidson.com (Bonds/Election Services, Lease Purchase) * GOLD LEVEL AFFILIATE	

NASB AFFILIATES



LEADERSHIP	INNOVATION	VISION	ENGAGEMENT
FINANCIAL SERVICES	INSURANCE SERVICES		STUDENT INFORMATION SERVICES
First National Capital Markets Tobin Buchanan - 308-352-8328 tbuchanan@fnni.com www.fncapitalmarkets.com (Public Finance, Election Guidance) * GOLD LEVEL AFFILIATE	National Insurance Services Steve Ott - 800-627-3660 sott@nisbenefits.com - www.nisbenefits.com (Group LTD, Life, Vision, Special Pay Plans, HRA's)		JMC Computer Services Pail Freid - 651-345-4654 Paul@jmcinc.com - www.jmcinc.com (Easy ADVISOR reporting and student information management) * GOLD LEVEL AFFILIATE
First Nebraska Credit Union Elly Heckel - 402-492-9100 marketing@firstnebraska.org www.firstnebraska.org (Taking care of your financial needs!)	Public Risk Management Sheri Shonka - 402-884-3751 - 877-649-4612 sheri.shonka@prmne.com - www.alicap.org (ALICAP, Insurance services) * GOLD LEVEL AFFILIATE		TECHNOLOGY CONSULTING
Nebraska Liquid Asset Fund - NLAF Barry Ballou - 402-705-0350 balloub@pfm.com - www.NLAFpool.org (Liquid Asset Fund, financing programs) * GOLD LEVEL AFFILIATE	LEGAL SERVICES		PRISM advisors Jason Richards - 402-593-8911 jprichards@prism-advisors.com www.prism-advisors.com (PEOPLE, PROCESS & SYSTEMS. IT strategic planning and project management through RFP to implementation) * GOLD LEVEL AFFILIATE
Union Bank & Trust Health Benefit Solutions Jennifer Ainsworth - 402-323-1815 jennifer.ainsworth@ubt.com www.ubt.com/health (Financial Services, Banking) * Silver Level Affiliate	MECHANICAL CONSTRUCTION		TECHNOLOGY/SOFTWARE
Wells Fargo Bank Andrew J. Detlefsen - 402-434-6701 andrew.j.detlefsen@wellsfargo.com www.wellsfargo.com (Financial Services, Banking)	Rasmussen Mechanical Services Jennifer Coggins - 712-323-0514 jennifer.coggins@rasmech.com www.rasmech.com (Your Single Source Service Provider)		Sparq Data Solutions Craig Caples - 402-423-4951 ccaples@sparqdata.com www.sparqdata.com (Paperless Board Meetings, Teacher Negotiations, Public Document Management, Document Imaging & Scanning) * GOLD LEVEL AFFILIATE
FOOD SERVICE	PLAYGROUND/SCOREBOARDS/ SURFACING		THERAPY SERVICES
Lunchtime Solutions Deni Winter - 605-235-0939 Ext 106 deni@lunchtimesolutions.com www.lunchtimesolutions.com (Progressive Food Service Management) * GOLD LEVEL AFFILIATE	Creative Sites, LLC Julie Kutilek - 402-614-4606 - 800-266-1250 julie@creativesitesllc.com (Playground equipment and site furnishings) * GOLD LEVEL AFFILIATE		Central Nebraska Rehabilitation Services Mary Walsh-Sterup - 308-675-1853 ext. 3222 mary@cnrehab.com - www.cnrehab.com (Providing PT, OT and Speech therapy in the school system)
Opaa! Food Management of Nebraska Greg Frost - 636-812-0777 www.opaafood.com (Contract Food Service Management)	Crouch Recreation Eric Crouch - 402-496-2669 eric@crouchrec.com - www.crouchrec.com (Playgrounds, Shelters, Scoreboards, Safety Surfacing & Site Amenities Manufacturers Rep) * GOLD LEVEL AFFILIATE		TRANSPORTATION
INSURANCE SERVICES	SAFETY & SECURITY SERVICES		Body Worx Inc. Josh Goodbrake - 308-293-3109 josh.bodyworx@gmail.com www.bodyworxrepair.com (Commercial Vehicle Collision Center Specializing in School Busses and Motor Coaches) *Silver Level Affiliate
Blue Cross Blue Shield of Nebraska Cortney Ray - 402-458-4823 cortney.ray@nebraskablue.com www.nebraskablue.com (Group health insurance) * GOLD LEVEL AFFILIATE	One Source The Background Check Company Neal Josten - 800-608-3645 ext. 5600 njosten@onesourcebackground.com www.onesourcebackground.com (Employment, Volunteer, Contractor Screening) * GOLD LEVEL AFFILIATE		
	VideoTronix Inc. David Harvey - 402-210-2839 david.harvey@vtisecurity.com www.vtisecurity.com (IP Video Surveillance, Networks, Access Control, Storage)		





1311 STOCKWELL STREET
LINCOLN, NE 68502
WWW.NASBONLINE.ORG

RETURN SERVICE REQUESTED



NASB BOARD NOTES

A monthly publication from the Nebraska Association of School Boards



LEADERSHIP

INNOVATION

VISION

ENGAGEMENT

IN THIS EDITION

LIC: MIGHTY BUT MIGHTY
SCHOOL BOARD MEMBER WEEK IN NEBRASKA
NASB IN D. C. - ADVOCACY, EQUITY & THE HILL
NASB'S ANNUAL MEMBERSHIP DRIVE COMING SOON
A PRODUCTIVE LEADERSHIP TEAM
CREATE A COMPLETE, CUSTOMIZED POLICY MANUAL
TRAINING, NETWORKING, ENGAGEMENT & EVENTS
YOUR NASB BOARD OF DIRECTORS & STAFF
... AND MUCH MORE!

AS WELL AS "THIS MONTH IN ..."

... ADVOCACY & GOVERNMENT RELATIONS
... ALICAP & INSURANCE
... BOARD LEADERSHIP
... ENERGY PURCHASING
... MEMBER ENGAGEMENT
... POLICY
... SEARCH & STRENGTHS
... TECHNOLOGY