

## POSTCARD

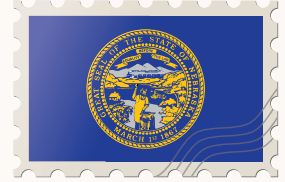
### School Board Members & Superintendents

Beginning this year, the Budget Adoption process for Nebraska's local governmental organizations has been revised.

LB 644 (aka The Postcard Bill), passed last year by the Legislature, added some new steps to the process and is also very specific about the information that must be provided to the public at each stage in approving your budget.

Check out the links, videos and resources we have provided to find out what all you need to know and do moving forward!

- NASB



John & Jane Taxpayer

644 Postcard Lane

Everytown, NE 68000

## LB 644 - THE POSTCARD BILL ... WHAT YOU NEED TO KNOW

### KEY LINKS, VIDEOS & RESOURCES

Beginning this year, the Budget Adoption process for Nebraska's local governmental organizations has been revised. LB 644 (aka The Postcard Bill), passed last year by the Legislature added some new steps to the process and is also very specific about the information that must be provided to the public at each stage in approving your budget.

As was done in previous years, your board must give four (4) calendar days' notice prior to the hearings. State statutes call for two (2) separate hearings that can follow one another. The first is a Proposed Budget Hearing, the second is the Tax Request Hearing.

If your district's proposed budget will increase your property tax more than your allowable growth percentage, you will need to participate in a Joint Public Meeting conducted by the county where your central office is located. The adopted budget statement and the necessary tax asking shall be filed with the county levying boards by September 30th. The approved budget resolution must be forwarded to the County Clerk by October 15.



CONTINUED ON PAGE 3

# NASB TRAINING, NETWORKING, ENGAGEMENT & EVENTS

LEADERSHIP

INNOVATION

VISION

ENGAGEMENT

#liveNASB

#weLIVEhere

Join NASB, as we travel the state for various workshops, meetings and events throughout the year.

To learn more, and register, visit the Events tab of [www.NASBonline.org](http://www.NASBonline.org)

<http://members.nasbonline.org/index.php/events>

To register for an NASB event, click on the 'My Membership' link, then navigate to the 'Events' dropdown and select 'Register'.  
If you do not have an email and password to log in or have forgotten it, please contact NASB at 800-422-4572 for assistance.

VIDEOS

<http://members.nasbonline.org/index.php/news-resources/videos>



## JULY

THIS WEEK!

NASB LEGISLATIVE LUNCH - MEET & GREET W/ LEG CANDIDATE LIPPINCOTT - JULY 27 - CENTRAL CITY

## AUGUST

NASB LEGISLATIVE LUNCH - MEET & GREET W/ LEG CANDIDATE HOLDCROFT - AUGUST 11 - SPRINGFIELD

NASB LEGISLATIVE LUNCH - MEET & GREET W/ LEG CANDIDATE HUGHES - AUGUST 17 - YORK

AREA MEMBERSHIP MEETINGS - AUGUST THROUGH SEPTEMBER (SEE PAGE 6)

REGISTER NOW!

AUGUST 23 - NEBRASKA CITY    AUGUST 24 - FREMONT    AUGUST 29 - GERING    AUGUST 30 - VALENTINE    AUGUST 31 - NORFOLK  
SEPTEMBER 1 - LA VISTA    SEPTEMBER 7 - YORK    SEPTEMBER 20 - NORTH PLATTE    SEPTEMBER 21 - KEARNEY

NASB LEGISLATIVE LUNCH - MEET & GREET W/ LEG CANDIDATES HARDIN & LEASE - AUGUST 28 - GERING

NASB LEGISLATIVE LUNCH - MEET & GREET W/ LEG CANDIDATE DeKAY - AUGUST 31 - PLAINVIEW

## SEPTEMBER

NASB BOARD CANDIDATE WEBINAR - SEPTEMBER 14 - 12:00 TO 1:00 PM CT & 7:00 TO 8:30 PM CT

ANNUAL SPARQ DATA SOLUTIONS TAILGATE PARTY - SEPTEMBER 17 - LINCOLN

THRIVING CHILDREN, FAMILIES & COMMUNITIES CONFERENCE - SEPTEMBER 19 - KEARNEY

FACILITIES & CONSTRUCTION - SEPTEMBER 22 - KEARNEY

## OCTOBER, NOVEMBER & DECEMBER

NASB BOARD CANDIDATE WEBINAR - OCTOBER 5 - 12:00 TO 1:00 PM CT & 7:00 TO 8:30 PM CT

LABOR RELATIONS - OCTOBER 5-6 - LINCOLN

STATEWIDE GENERAL ELECTION - NOVEMBER 8

STATE EDUCATION CONFERENCE - NOVEMBER 16-18 - OMAHA

NEW BOARD MEMBER WORKSHOPS - DECEMBER - GERING, NORTH PLATTE, KEARNEY, YORK, LA VISTA, NORFOLK

# LB 644 - THE POSTCARD BILL ... WHAT YOU NEED TO KNOW



LEADERSHIP

INNOVATION

VISION

ENGAGEMENT

#liveNASB

#weLIVEhere

CONTINUED FROM PAGE 1

We've provided two brief explanatory videos, one with the Nebraska Association of County Officials (NACO) and the other with the introducer of the bill, Sen. Ben Hansen, on this entire process along with the following attachments to help you meet the state's new budget adoption requirements, along with a number of other links and resources. All of those can be found on the Government Relations tab of the NASB website at:

<http://members.nasbonline.org/index.php/government-relations>

WATCH: LB 644 VIDEO BREAKDOWN WITH NASB & NACO

WATCH: LB VIDEO Q&A WITH SENATOR BEN HANSEN

## ITEMS INCLUDED IN THE VIDEOS

How does a school district know if they must take part in the joint public meeting?

What will the County Clerk need from the district and when?

What tools are available to aid districts in navigating their requirements?

What are the consequences if expectations are not met?

What are the steps a school should follow?

What will the taxpayer see because of this bill?

What if my district has land in multiple counties?

Timeframes, Upcoming tweaks to the bill, and more ...

## RESOURCES

Administrative Regulation 0702.03R1 - Notice of Budget Hearings and Board Meeting

Administrative Regulation 0702.03R2 - Presentation at Joint Public Hearing

Administrative Regulation 0702.03R3 - Budget Hearing and Resolution Checklist Procedures

Administrative Regulation 0702.03R4 - Determining Allowable Growth Percentage

Postcard Calculation Formula

Nebraska Statutes 77-1630 to 77-1634

List of County Assessors



## WE ARE HIRING

## NASB IS LOOKING FOR A BOARD LEADERSHIP EDUCATION DATA ANALYST!

This person will provide support and assistance through the management, collection, and study of data collected through NASB Strategic Planning, Community Engagement, Online Surveys, and other programs and services provided through the department. Provide analytical assessment through statistical techniques, reports, and other strategies to optimize the understanding, quality, trends, or patterns of data sets. Manage the database, administer surveys to generate data collection from key stakeholder groups, sustain data code catalogs, and maintain the current database and system for improvement opportunities.

IF YOU OR SOMEONE YOU KNOW IS INTERESTED, LEARN MORE & APPLY AT  
<http://members.nasbonline.org/index.php/about-us>



## BOARD CALENDAR AGENDA ITEMS FOR YOUR AUGUST MEETINGS

View the full, detailed calendar at: <http://members.nasbonline.org/index.php/resources>

### POLICY GOVERNANCE

- Option Enrollment Application period. School districts will accept option enrollment applications between Sept 1 and March 15 for attendance during the following and subsequent school years.
- Personnel Report. On or before Sept 15, all schools shall file with the Department of Ed a fall personnel report, which shall specify the names of all individuals employed by the school who are certificated.
- Federal Family Educational Rights and Privacy Act (FERPA). Annual notice provided to parents/guardians and eligible students of their rights to inspect and review educational records, amend education records, consent to disclose personally identifiable information in education records and file a complaint with the U.S. Department of Education.
- Federal Protection of Pupil Rights Amendment (PPRA). Annual notice provided to parents of the policies regarding surveys of students, instructional materials, physical examinations, personal information used for marketing.
- Federal Child Nutrition Programs. If school districts participate in National School Lunch Programs the School Breakfast Program or the Special Milk Program, they must provide parents and the public information about free and reduced-price meals and/or free milk and must provide parents with an application form.
- Federal Asbestos Hazard Emergency Response Act (AHERA). Requires school districts to have an asbestos management plan for each school building in the district (whether lease or own). Annually, school districts must notify parents, teachers, and employee organizations of the availability of the asbestos management plan. All members of the custodial staff who work in a building containing asbestos must have awareness training and all new custodial staff must be training within the first 60 days of hiring.
- Federal McKinney-Vento Homeless Assistance Act. Requires public notice of the education rights of homeless students. The notice must be disseminated in places where homeless students receive services including schools, family shelters, and soup kitchens. They must be understandable to homeless students and their parents and when necessary, in their native language.
- Federal Non-Discrimination. Requires all recipients of federal funds to notify their students, parents, and others that they do not discriminate on the basis of race, color, national origin, sex,

disability, and age, and, if applicable, that they provide equal access to the Boy Scouts of America and other designated youth groups.

- Federal Individuals with Disabilities Education Act (IDEA). Annual notice to parents of a child with a disability of the district's procedural safeguards. A notice must also be placed on the district's website. The notice must be easily understandable and in the native language of the parents.

### ADVOCACY

- Discuss the NASB Legislative Committee Report and outcome of proposals submitted for consideration

### DISTRICT/ESU RESOURCES (BUDGET)

- Collective Bargaining; Timelines. On or before Sept 15, negotiations contract dispute decision; Boards may enter into collective bargaining agreements for periods not to exceed four years.
- Collective Bargaining Timeline. On or before Sept 1, of the year preceding the contract year in question, the certificated and instructional employees' collective-bargaining agent shall request recognition as bargaining agent. The governing board shall respond to such request not later than the following Oct 1
- Board/Administrators Budget Work Session
- Certification of District's Assessed Valuation Public Budget Hearing / Adopt Budget; Due on or before Sept 20
- Board Adopted Budget. On or before Sept 30, General Budget Adoption. The board shall file with, certify to the levying board, and file with the auditor a copy of the adopted budget statement together with the amount of the tax required to fund the adopted budget.
- Report to County Board. On or before Sept 30, a [Class III school district boards] are required to report to the county board and the learning community coordinating council (if applicable) the entire revenue raised by taxation and all other sources for the previous fiscal year and a budget for the ensuing fiscal year.
- Class IV District Report to County Board. On or before Sept 30, [Class IV school district boards] are required to report to the county board an estimate of the amount of funds required for the next school fiscal year.

CONTINUED ON PAGE 5



# AT THE BOARD TABLE

LEADERSHIP

INNOVATION

VISION

ENGAGEMENT

#liveNASB

#weLIVEhere

## BOARD CALENDAR AGENDA ITEMS FOR YOUR AUGUST MEETINGS

CONTINUED FROM PAGE 1

- Class V District Report to County Board. On or before Sept 20, [Class V school district boards] that is a member of a learning community is required to report to the county board and the learning community coordinating council the entire revenue raised by taxation and all other sources for the previous school fiscal year and a budget for the ensuing school fiscal year.

### REPORTS

- Board Committees; Superintendent; Administrators
- American Civics Committee. Beginning of every school year, the school board must appoint a committee of three to be known as the Committee on American Civics. The committee will hold no fewer than two public meetings annually, at least one when public testimony is accepted. Examine and ensure that the social studies curriculum used in the district is aligned with the social studies standards adopted pursuant to section-724. \*Reference: (January) Board Committee Appointments.
- Security Assessment. State school safety director is required to complete an assessment of the security of each school building no later than Aug 31.

### BOARD LEADERSHIP DEVELOPMENT

- Board Candidate Webinars: Wednesday, September 14 at 12 p.m. and 7 p.m. and Wednesday, October 5 at 12 p.m. and 7 p.m.
- Review and discuss Board Governance Standard VI. District Resources
- NASB Area Membership Meetings

### LEARNING COMMUNITY

- Learning Community Attendance Reports. On or before Sept 1, each district that is a member of a learning community needs to report to the learning community coordinating council attendance reports including violations of attendance, results of attendance investigations, policies on excessive absenteeism and records of notices and reports.
- Learning Community Budget. On or before Sept 1, the Learning Community shall file a copy of the adopted budget statement with member school districts.

### BOARD CANDIDATE WEBINARS

Each month, this space reflects the recommended and required upcoming agenda items to be included in the regular board meeting agenda. The month of August requires a heavy lift both for the superintendent and board. If you have questions, please contact Marcia Herring, Director of Board Leadership or if you have identified a missing topic, please let us know, we value the feedback. Please note that as promised, we have added two additional NASB Candidate Webinars. The live webinar provides an overview of the role and responsibilities of a board member serving a local school district or Educational Service Unit. The additional dates are listed below. The webinar targets board candidates but may also be of interest to current board members, superintendents, and ESU Administrators. Registration is free. Join us for the NASB Candidate Webinar on:

Wednesday, September 14 at 12:00 PM to 1:00 PM CT

Wednesday, September 14 at 7:00 PM to 8:30 PM CT

Wednesday, October 5 at 12:00 PM to 1:00 PM CT

Wednesday, October 5 at 7:00 PM to 8:30 PM CT

If you have questions about the NASB Candidate Webinar or any monthly board meeting agenda items, please never hesitate to contact Marcia at 800-422-4572 or [mherring@NASBonline.org](mailto:mherring@NASBonline.org).

# 2022 AREA MEMBERSHIP MEETINGS

Training - Recognition - Networking - Engagement

Nebraska City - Fremont - Gering - Valentine - Norfolk - La Vista - York - North Platte - Kearney



AUGUST 23 - NEBRASKA CITY

AUGUST 24 - FREMONT

AUGUST 29 - GERING

AUGUST 30 - VALENTINE

AUGUST 31 - NORFOLK

SEPTEMBER 1 - LA VISTA

SEPTEMBER 7 - YORK

SEPTEMBER 20 - NORTH PLATTE

SEPTEMBER 21 - KEARNEY

## LEADERSHIP AT THE LOCAL LEVEL

THE BOARD'S ROLE IN THE EMPLOYEE SHORTAGE

WHAT PASSED, COULDN'T LAST, & IS CHANGING FAST: A LEGISLATIVE UPDATE

PARENT ENGAGEMENT - INVOLVEMENT IN THEIR CHILD(REN)'S EDUCATION

SOCIAL MEDIA FOR BOARD MEMBERS

ALL THINGS ALICAP AND LOSS CONTROL

PREPARING FOR BOARD AND DISTRICT/ESU LEADERSHIP TRANSITION



# NASB PARTICIPATES IN NATIONAL FORUM ON EDUCATION POLICY

Nebraska School Boards

LEADERSHIP

INNOVATION

VISION

ENGAGEMENT

#liveNASB

#weLIVEhere

Earlier this month, NASB Executive Director, John Spatz, participated in the annual National Forum on Education Policy put on by the Education Commission of the States (ECS), the first in-person meeting of the ECS since 2019. ECS is a membership organization that partners with education policy leaders to address issues by sharing resources and expertise, and John serves a key role with this group, making sure Nebraska's school board members have a voice at the table.

Created over 50 years ago, ECS serves both the people who develop and implement education policy and the students who directly benefit. At the Forum, many issues of common interest were addressed, such as education workforce shortages and student mental health. Joining John Spatz at the Forum this year were Sen. Walz, Sen. Morfeld, Sen. Day, Commissioner Blomstedt, and Nebraska Coordinating Commissioner for Higher Education, Mike Baumgartner.



The organization is led by a Governor as its chair, the vice chair is a legislator, and the political party of the chair and vice chair positions alternate every two years. The current chair is the Governor of Iowa, Kim Reynolds. ECS supports all 50 states and four territories – the District of Columbia, American Samoa, Puerto Rico and the Virgin Islands. Each state appoints seven commissioners who help guide the work of ECS, and their own state's education agendas. Commissioners also have the authority to approve amendments to bylaws and provide strategic information to ECS staff regarding state education policy issues.

The key role ECS plays is to bring education leaders together from different backgrounds, states, and political views at annual gatherings to provide opportunities to interact, learn and collaborate. In Nebraska the Education Commission of the States representatives are: Governor Pete Ricketts; Matt Blomstedt, Commissioner of Education; Senators Lynn Walz and Adam Morfeld; John Spatz, Executive Director, NASB; & Mike Baumgartner, Executive Director of the Nebraska Coordinating Commission for Higher Education.

ECS is the trusted source for comprehensive knowledge and resources on hundreds of education policy issues. It is a non-partisan organization that provides research of both sides of issues along with what is happening on the issue in other areas. ECS gives policy makers the information they need in shaping policy in their state on critical educational issues. While covering the full spectrum of education policy, Education Commission of the States dives deeply into key issues impacting all states.

To learn more, visit their website at <http://www.ecs.org/>



**THRIVING CHILDREN, FAMILIES, AND COMMUNITIES CONFERENCE**  
**Monday, September 19, 2022**



# EDUCATION LEADERS FROM NEBRASKA TRAVEL TO GHANA

LEADERSHIP

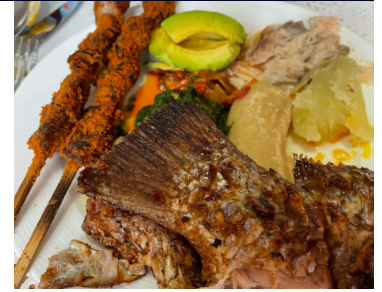
INNOVATION

VISION

ENGAGEMENT

#liveNASB

#weLIVEhere



Earlier this July, NASB's Colby Coash was invited to take part in a delegation of Nebraskans to the country of Ghana by "GhaNeb", an organization working to strengthen ties between Nebraska and Ghana. Also taking part in the delegation was Spencer Head of the Omaha Public School Board of Education, and State Senator Terrell McKinney.

The delegation participated in a variety of meetings with government officials in areas of transportation, agriculture, and education. Ghana, their people, and their government are eager to learn about innovations in these areas.

"WHEN YOU TRAVEL TO OTHER COUNTRIES, YOU COME TO APPRECIATE THE BLESSINGS YOU HAVE AT HOME. EDUCATORS IN GHANA ARE ENVIOUS OF THE OPPORTUNITIES AFFORDED TO NEBRASKA STUDENTS. IT WAS MY HONOR TO SHARE THE STORY OF NEBRASKA'S SUCCESS IN EDUCATION AND HOPE TO CONTINUE THE RELATIONSHIPS WE BUILT."

Ghana is relatively new to having education "public" and sees the future of their country linked to the quality of their education system. Of particular interest to them is how Nebraska provides "pathways" for students who have an aptitude for certain careers. In other words, how can a student who wants to explore healthcare, the trades, the arts, or STEM be supported by their system. They were very interested in how Nebraska schools have been able to partner with higher education and the business community to provide students with opportunities for career exploration and dual credits.

## BACKGROUND

Ghana's education system is based on a colonial model of teacher presentation, student memorization, and test taking. This model leaves little room for critical thinking or exploration of interests. They are eager to work toward a change in their approach. We were able to show them the outcomes that can be achieved through partnerships.

## NEXT STEPS

There is a possibility of a delegation of education professionals and leaders visiting Nebraska soon to see firsthand the outcomes for students in Nebraska.

# NOMINATIONS FOR THE NASB BOARD & LEG COMMITTEE

Nomination forms for seats on both the NASB Board of Directors and the NASB Legislation Committee will be emailed to each School Board Member, Superintendent/ESU Administrator and Secretary here shortly. These are great opportunities to expand your leadership horizons by serving on a statewide board committed to providing resources to school and ESU board members.

With that, every 10 years, the Nebraska Legislature goes through a process to realign district boundary lines. In accordance with our NASB Bylaws, we also review and realign our NASB Legislation Committee and region director seats based off of their changes after the legislature has completed its process. On June 11th, the NASB Board of Directors approved these changes. Look for more communication from us regarding any changes to your district or ESU's legislative or region seats with NASB.

# UNITY THROUGH COLLECTIVE VOICE



LEADERSHIP

INNOVATION

VISION

ENGAGEMENT

#liveNASB

#weLIVEhere

*Prior to her election to the State Board of Education in November 2020, Patti Gubbels served on the Norfolk Board of Education, and was a member of the NASB Board of Directors, and the NASB Legislation Committee since 2016.*

We live in a country characterized by divisiveness where steadfast position holders are unwilling to waver or compromise and where attacks are made not only on ideas but also on values and individuals. This discord causes alienation and hostility, and it also damages and stifles group decision-making.

Governing boards, such as state and local school boards, city/community boards, and corporation boards are charged with developing policies and making important decisions. For effective decision making to occur, boards must conduct their business with a sense of direction and speak with one voice. Boards that operate with collective voice convey strength, credibility, and purpose.



Collective voice is the term used to describe the unity and power that result when all individual board members contribute to discussions and then coalesce to make decisions that are much more impactful than any one individual can make. As individual board members, we all bring our own perspectives, experiences, and concerns to the board table. For collective voice to exist, individual board members need to be heard and understood, and the ideas shared need to be aligned with a common goal. When individual board members do not share the common goal or are not willing to give and take to function as part of the collective voice, boards become dysfunctional.

Collective voice does not mean that individuals are expected to share the same views or propose the same solutions. Healthy dissent can be a sign of effective boards because it demands that attention be paid to individual differences and perspectives which often give rise to innovative ideas and problem solving. Ongoing and habitual dissent, however, lead to inefficient and ineffective board operations.

For example, consider a group of musicians performing an instrumental piece. Each musician is heard during the performance, but the resulting music is much more than any single individual musician's contribution. Imagine what would happen if one or two musicians in the group decide to perform their own songs as the orchestra is performing a different musical piece. When those individuals stray from the goal of performing the designated musical selection or believe their self-selected performances are more important than the piece the group is performing, the result is chaos and confusion for the orchestra and the audience.

Arriving at collective voice may be difficult if not impossible to attain especially when issues to be decided are contentious. However, board members can use the following strategies to promote speaking with one voice:

1. Establish working agreements such as being present intellectually during meetings and attacking problems and not people.
2. Develop relationships with fellow board or group members through social settings. When relationships exist, individuals feel a sense of connectedness with colleagues.
3. Ask thoughtful questions of yourself and others such as "I wonder...", "Couldn't we agree that...", "What is most important..." "What is the goal..."
4. Be prepared ahead of meetings with data, guiding questions, and alternative solutions.
5. Encourage opportunities for individual expression of opinions and ideas.
6. Compromise and work toward consensus.

The success of governing boards depends on the unity provided through collective voice. Over the next few months as we approach the November elections, we, as individuals, need to identify candidates who represent our views and perspectives. It is also important, when considering which candidates to support, to look for individuals willing to work with others as open-minded participants who listen, agree, and disagree, and to then come together to arrive at decisions that are meaningful and matter.

*Disclaimer: The opinions from Dr. Patti S. Gubbels are hers and do not represent the Nebraska State Board of Education.*

ED LAW BOOKS ORDER FORMS ARE COMING SOON!

Look for the order form email, from Lindsey Wooton soon. Books are \$77 + tax (if applicable) per book. eBooks are also available for the same price (minus \$7 shipping) and can be purchased as a standalone.



## ... ADVOCACY & GOVERNMENT RELATIONS

Join us for Legislative Meet & Greets when we come to your part of the state!

*District 34 Legislative Candidate  
Lippincott - July 27 - Central City*

*District 36 Legislative Candidate  
Holdcroft - August 11 - Springfield*

*District 24 Legislative Candidate Hughes  
August 17 - York*

*District 48 Legislative Candidates Hardin  
& Lease II - August 28 - Gering*

*District 40 Legislative Candidate DeKay  
August 31 - Plainview*

*Call Colby & Matt with any questions!  
#liveNASB #weLIVEhere*

## ... MEMBER ENGAGEMENT

### SAVE THE DATE

2022 State Education Conference  
WORKING TOGETHER WINS

November 16-18

CHI Health Center - Omaha

*Sharon*

## ... ALICAP & INSURANCE

ALICAP Members! Take note: The ALICAP Board of Trustees met on Friday, July 22nd and set budget for the 22-23 year. As a result, ALICAP Members will have their billing statements the week of August 1st. ALICAP Premium Contributions are due September 30th!

*Thanks, Megan!*

## ... SEARCH, STRENGTHS & AWARDS

### EDUCATION LEADERSHIP SEARCH SERVICE

Now is the time to contact us for info on the search process if you have a superintendent retiring in June of 2023.

### AWARDS OF ACHIEVEMENT

Board member awards will be presented at Area Membership Meetings starting in August.

### GALLUP STRENGTHSFINDER

Teammates with the full picture of one another's strengths see each other in new ways – improving communication, collaboration and performance.

Email [sbecker@NASBonline.org](mailto:sbecker@NASBonline.org) for these programs/services.

*- Shari -*

## Nebraska Schools **Top Choice** for Background Screening

One Source has been providing peace of mind for community schools since 2004.



[onesourcebackground.com](http://onesourcebackground.com)



## ... TECHNOLOGY

Nicole & Darion will be at Administrator Days in Kearney July 27-28. Stop by the Sparq booth and say hello!

Welcome New Sparq Meetings  
Subscriber: Leyton Public Schools

If you have any questions on Sparq Meetings or Negotiations or would like to schedule a demonstration, please reach out and we'd be happy to help!

Darion - [dmiller@NASBonline.org](mailto:dmiller@NASBonline.org)  
Nicole - [nkobus@NASBonline.org](mailto:nkobus@NASBonline.org)  
[www.sparqdata.com](http://www.sparqdata.com)

## ... ENERGY PURCHASING

Our natural gas purchasing consortiums, NJUMP and CJUMP, have locked in prices on substantial amounts of gas for this winter even as prices seem to be heading upward again due to a hot summer and low storage volumes. We have several new members for this winter and if your district is not already a member, talk to Jim Luebke about getting membership information for next spring's signup period.

*Contact Jim to learn more!*

## ... DATA ANALYTICS

As budget time nears, every district faces difficult choices this year to balance spending and levies under tight statutory lids during a period of high inflation. Our Legislature makes the rules that determine the resources available to educate the students of your district. NASB can collect data and illustrate the financial situation in your district to help you better inform your Legislators of your district's financial challenges for next winter's session.

*Contact Jim to learn more!*

## ... POLICY

Although it's only July, this is a great time in an election year to take a close look at the policy for your January Board Organizational Meeting. Many districts face a significant amount of board turnover following the elections, which can sometimes result in a deadlock for electing new officers, particularly a Board President. Your Organizational Meeting policy should describe a process for resolving such ties since many repeated tie votes only creates ill will within the board, and officers must be in place to continue the meeting. Whether the method employs a coin flip, continuing with the highest returning officer as President until a vote decides otherwise, or some other method, it is important to be able to hold your meetings and handle routine business in a timely manner.

*Contact Jim to learn more!*

## ... BOARD LEADERSHIP

Check out "At the Board Table" on pages 4-5.

*Marcia, Kari, Katie & Caden*



**Paul Grieger**  
(800) 528-5145  
[pgrieger@dadco.com](mailto:pgrieger@dadco.com)



**Cody Wickham**  
(866) 809-5596  
[cwickham@dadco.com](mailto:cwickham@dadco.com)



**Andy Forney**  
(866) 809-5443  
[aforney@dadco.com](mailto:aforney@dadco.com)

## Building a Better Future with Nebraska's Public Finance Partner

D.A. Davidson & Co. has long been a leader in innovative debt financing for school districts. What we're most proud of are the relationships we've nourished and the strong community improvements that are made as a result.

Our public finance professionals take a personal interest and a hands-on approach, carrying our deals from start to finish. Because you deserve solutions tailored to fit you.

- School Bond Issues
- Tax Anticipation / Construction Notes
- Lease-Purchase Financing
- QCPUF Bonds
- Refinancing Bond Issues



**D | A | DAVIDSON**

450 Regency Parkway, Suite 400 | Omaha, NE 68114  
[dadavidson.com](http://dadavidson.com) | D.A. Davidson & Co. member FINRA and SIPC

Board Notes is published on a monthly basis as a member service. Advertising is available in every issue. To advertise or become an Affiliate, please contact Matt Belka for further information. Articles or advertising contained herein do not necessarily represent the views or policies of NASB.

Nebraska Association of School Boards  
1311 Stockwell Street - Lincoln, NE 68502  
Matt Belka, Editor - John Spatz, Publisher

## YOUR NASB LEADERSHIP TEAM



**Brad Wilkins**  
President  
Ainsworth



**Kim Burry**  
President-Elect  
Bayard



**Sandy Noffsinger**  
Vice President  
Dundy County Stratton



**Stacie Higgins**  
Past President  
Nebraska City

## YOUR REGION DIRECTORS & NASB STAFF



**Region 1**  
**Neal Kanel**  
HTRS



**Region 2**  
**Sarah Centineo**  
Bellevue



**Regions 3, 6 & 7**  
**Shavonna Holman**  
Omaha



**Regions 3, 6 & 7**  
**Tracy Casady**  
Omaha



**Regions 3, 6 & 7**  
**Nancy Kratky**  
Omaha



**Regions 4 & 5**  
**Bob Rauner**  
Lincoln



**Regions 4 & 5**  
**Annie Mumgaard**  
Lincoln



**Region 8**  
**Robin Richards**  
Ralston



**Region 9**  
**Alan Moore**  
ESU 3



**Region 10**  
**Ed Swotek**  
Malcolm



**Region 11**  
**Jim Vlach**  
Lyons-Decatur Northeast



**Region 12**  
**Lisa Wagner**  
Central City



**Region 13**  
**Marilyn Bohn**  
ESU 10



**Region 14**  
**Steve Koch**  
Hershey



**Region 15**  
**Joel Carlson**  
Cozad



**Region 16**  
**Stephanie Summers**  
David City



**Region 17**  
**Michelle Reikofski**  
Osmond



**Region 18**  
**Doug Keener**  
Mitchell



**Region 19**  
**Stacy Jolley**  
Millard

## YOUR NASB STAFF

**Matt Belka**  
Director of Marketing,  
Communications & Advocacy



**Colby Coash**  
Associate Executive Director/  
Dir. of Government Relations



**Marcia Herring**  
Director of Board Leadership



**Kem Loecker**  
Executive Administrative  
Assistant



**John Spatz**  
Executive Director



**Megan Boldt**  
Associate Executive Director/  
Director of ALICAP



**Katie Coble**  
Board Leadership Associate



**Sallie Horky**  
Chief Operating Officer



**Jim Luebke**  
Director of Policy Services



**Makenzie Barry**  
ALICAP Data &  
Financial Specialist



**Craig Caples**  
Director of Technology



**Sharon Endorf**  
Director of  
Member Engagement



**Rachel Horstman**  
Business Manager



**Kari Stephens**  
Board Leadership Associate



**Shari Becker**  
Director of Education  
Leadership Search Service



**Abi Carlson**  
Event & Search Service  
Associate



**Caden Frank**  
Board Leadership Associate



**Nicole Kraus**  
Events & Engagement  
Associate



**Lindsey Wooton**  
Administrative Specialist



# YOUR 2022 NASB AFFILIATES



LEADERSHIP

INNOVATION

VISION

ENGAGEMENT

#liveNASB

#weLIVEhere

## YOUR 2022 PLATINUM AFFILIATES



## YOUR 2022 GOLD AFFILIATES



## ACCOUNTING

Watts and Hershberger, P.C.  
Jim Watts  
402-483-7512 - jw1cpa@aol.com - <https://gowh.com/>  
(CPA, Accounting)

## ARCHITECTS

BCDM Architects  
Pat Carson - 402-384-6422  
pcarson@bcdm.net - [www.bcdm.net](http://www.bcdm.net)  
(Creating environments that form people)  
\* PLATINUM LEVEL AFFILIATE

BVH Architecture  
Cleve Reeves - 402-475-4551  
creeves@bvh.com - [www.bvh.com](http://www.bvh.com)  
(A design-centered critical practice embracing a creative and collaborative process to design architecture that enhances the community in which it serves.)  
\* PLATINUM LEVEL AFFILIATE

## ARCHITECTS

Clark & Enersen  
Steve Miller - 402-477-9291  
steve.miller@clarkenersen.com - [www.clarkenersen.com](http://www.clarkenersen.com)  
(From the very beginning, partnership has defined us.)  
\* PLATINUM LEVEL AFFILIATE

CMBA Architects  
Jim Brisnehan - [brisnehan.j@cmbaarchitects.com](mailto:brisnehan.j@cmbaarchitects.com)  
Troy Keilig - [keilig.t@cmbaarchitects.com](mailto:keilig.t@cmbaarchitects.com)  
Courtney Koch - [koch.c@cmbaarchitects.com](mailto:koch.c@cmbaarchitects.com)  
308-384-4444 - [www.cmbaarchitects.com](http://www.cmbaarchitects.com)  
(Architecture, Master Planning, Interiors, Bond Assistance/Community Engagement)  
\* PLATINUM LEVEL AFFILIATE

Carlson West Povondra Architects  
Jamie Eckmann - 402-551-1500  
jeckmann@cwparhitects.com - [www.cwparhitects.com](http://www.cwparhitects.com)  
(Architecture, planning, feasibility studies)  
\* GOLD LEVEL AFFILIATE

## ARCHITECTS

DLR Group  
Vanessa Schutte - 402-393-4100  
vschutte@dlrgroup.com - [www.dlrgroup.com](http://www.dlrgroup.com)  
(Architecture, engineering, Ed. facility planning)

## AWARDS & PLAQUES

Awards Unlimited  
Tim Moravec - 402-474-0815  
tmoravec@awardsunlimited.com  
[www.awardsunlimited.com](http://www.awardsunlimited.com)  
(Trophies, awards, plaques, etc.)

## BUILDING CONTROLS/SERVICES

Control Management Inc.  
Nathan Haug - 402-571-9454  
nathan@cmiomaha.com - [www.cmiomaha.com](http://www.cmiomaha.com)  
(Building Automation, Security and Energy Optimization for New and Existing Systems)



## LEADERSHIP

## INNOVATION

## VISION

## ENGAGEMENT

## #liveNASB

## #weLIVEhere

### CONSULTING

Akagi Consulting LLC  
Mark Akagi - markakagi3@gmail.com

### CONSTRUCTION SERVICES

BD Construction  
Marsha Wilkerson - 308-234-1836  
mwilkerson@bdconstruction.com - BDconstruction.com  
(Construction Management at Risk and as Agent,  
Facility Planning, Site Selection, Pre-bond  
Community Education, Stakeholder Engagement)  
\*GOLD LEVEL AFFILIATE

Boyd Jones Construction  
Emily Bannick - 402-550-1808  
ebannick@boydjones.biz - www.boydjones.biz  
(Construction Mgmt, Pre-Bond, Pre-Construction,  
Facility Evaluation, Early Stage Planning)  
\* PLATINUM LEVEL AFFILIATE

Cheever Construction  
Douglas Klute - 402-477-6745  
dklute@cheeverconstruction.com  
www.cheeverconstruction.com  
\* GOLD LEVEL AFFILIATE

Kingery Construction Co  
Rod Berens - 402-465-4400  
rodb@kccobuilders.com - www.kccobuilders.com  
(Design-Bid-Build, Design-Build, Construction Mgmt,  
General Contractor, Pre-Bond/Pre-Construction)  
\* GOLD LEVEL AFFILIATE

MCL Construction  
Heather Fredrick - 402-339-2221  
haf@mcconstruction.com - www.mcconstruction.com  
(Navigating the entire construction process)  
\* GOLD LEVEL AFFILIATE

Nemaha Sports Construction Inc  
Don Traska - 402-434-5488  
don.traska@nemaha.net - www.nemaha.net  
(Athletic Fields, Parks & Recreation, Hardscapes)  
\* GOLD LEVEL AFFILIATE

Tetrad Property Group  
Cassie Paben - 402-580-2355  
cpaben@tetradpropertygroup.com - tetradpropertygroup.com  
(Owner's Representative, Facility Planning, Site  
Selection, Pre-Bond Community Education,  
Stakeholder Engagement, Facility Management)

W. A. Klinger  
Matt Thompson - 712-233-3233  
mthompson@waklinger.com - www.waklinger.com  
(Pre-Construction, Construction Management,  
Design-Build, and General Contracting Services.)

### DATA SECURITY, VIDEO & COMMUNICATIONS

Filament Essential Services  
Dan Kunzman - 402-479-6663  
dank@fes.org - www.filamentservices.org  
(SOCS websites+apps, Marketing/Branding/Video, Data,  
Filament Essential Services is a new division of FES)  
\* PLATINUM LEVEL AFFILIATE

### DESIGN BUILD

Ayars & Ayars, Inc.  
Darl Naumann - 402-435-8600 - 402-570-9214  
dnaumann@ayarsayars.com - www.ayarsayars.com  
(Design-build leader focused on creating  
opportunities by building beneficial relationships,  
processes, and projects)  
\*GOLD LEVEL AFFILIATE

### ENERGY SERVICES

Community Building Solutions  
Jacob Hurla - 785-580-3014  
jhurla@communitybuildingsolutions.com  
(Providing a cost-effective avenue for school districts  
to address outdated equipment, resolve comfort  
challenges, and reduce energy and maintenance  
costs. Serving underserved rural communities cost-  
effectively is the core of our mission.)  
\* PLATINUM LEVEL AFFILIATE

Facility Advocates  
Dave Raymond - 402-206-8777  
draymond@facilityadvocates.com  
www.facilityadvocates.com  
(Building Construction & Energy Services)  
\* GOLD LEVEL AFFILIATE

Navitas  
Nick Rosenberry - 402-840-0370  
nrosenberry@navitas.us.com - https://navitas.us.com/  
(Energy Savings, Building Construction, Energy  
Management, Guaranteed Results)  
\* GOLD LEVEL AFFILIATE

Optimized Systems  
Mike Taylor - 402-981-1005  
mike.taylor@optimized-systems.com  
www.Optimized-Systems.com  
(Energy Optimization, Energy Management,  
Commissioning, Metering, Energy Studies,  
Mechanical System Assessments, Troubleshooting)  
\* GOLD LEVEL AFFILIATE

TRANE  
Matt Foertsch - 402-596-8007  
mfoertsch@trane.com - www.trane.com/omaha  
(Building Construction & Energy Services. A global  
provider of indoor comfort syste)  
\* GOLD LEVEL AFFILIATE

### FINANCIAL SERVICES

Ameritas Investment Company  
Jennifer Kobza - 402-214-2118  
jennifer.kobza@ameritas.com - (Public Finance)  
\* PLATINUM LEVEL AFFILIATE

D.A. Davidson & Co.  
Paul Grieger - 402-392-7986 - pgrieger@dadco.com  
Cody Wickham - 402-392-7989 - cwickham@dadco.com  
Andy Forney - 402-392-7988 - aforney@dadco.com  
www.dadavidson.com  
(Bonds/Election Services, Lease Purchase)  
\* PLATINUM LEVEL AFFILIATE

### FINANCIAL SERVICES

First National Capital Markets  
Tobin Buchanan - 308-352-8328 - tbuchanan@fnni.com  
Carl Dietz - 308-289-3920 carldietz@fnni.com  
Matt Fisher - 308-380-3831 mfisher@fnni.com  
www.fncapitalmarkets.com  
(Public Finance, Election Guidance)  
\* GOLD LEVEL AFFILIATE

Nebraska Liquid Asset Fund - NLAF  
Barry Ballou - 402-705-0350  
balloub@pfm.com - www.NLAFpool.org  
(Liquid Asset Fund, financing programs)  
\* PLATINUM LEVEL AFFILIATE

Piper Sandler  
Jay Spearman - 402-599-0307  
jay.spearman@psc.com  
(Financing for Capital Construction Products, Bonds,  
Refunding Bonds, Notes, NASB Lease Purchase)  
\* PLATINUM LEVEL AFFILIATE

### FOOD SERVICE

Lunchtime Solutions  
Susan Gracey - 402-984-4546  
s.gracey@lunchtimesolutions.com  
www.lunchtimesolutions.com  
(Progressive Food Service Management)  
\* GOLD LEVEL AFFILIATE

Opaa! Food Management of Nebraska  
Greg Frost - 816-210-9359  
gfrost@opaafod.com - www.opaafod.com  
(Contract Food Service Management)

### FUNDRAISING

Omaha Public Schools Foundation  
Toba Cohen-Dunning  
402-502-3003 - toba.cohendunning@ops.org  
https://omahapublicschoolsfoundation.org  
(The Omaha Public Schools Foundation enriches  
students' lives by funding opportunities for success.)

### INSURANCE SERVICES

American Fidelity  
Stacey Anderson  
402-432-2251 - Stacey.anderson@americanfidelity.com  
www.americanfidelity.com/nebraska  
(Solutions built for the education community)  
\* PLATINUM LEVEL AFFILIATE

Blue Shield of Nebraska  
Cortney Ray - 402-458-4823  
cortney.ray@nebraskablue.com  
www.nebraskablue.com  
(Group health insurance)  
\* GOLD LEVEL AFFILIATE

National Insurance Services  
Steve Ott - 800-627-3660  
sott@nisbenefits.com - www.nisbenefits.com  
(Group LTD, Life, Vision, Special Pay Plans, HRA's)



# YOUR 2022 NASB AFFILIATES



## LEADERSHIP

## INNOVATION

## VISION

## ENGAGEMENT

#liveNASB

#weLIVEhere

### INSURANCE SERVICES

Public Risk Management  
Sheri Shonka - 402-884-3751 - 877-649-4612  
sheri.shonka@prmne.com - www.alicap.org  
(ALICAP, Insurance services)  
\* PLATINUM LEVEL AFFILIATE

### LEGAL SERVICES

Mueller Robak, LLC  
William Mueller - 402-434-3399  
mueller@muellerrobak.com  
(Lobby firm)

### MENTORING

TeamMates Mentoring  
Hannah Miller - 319-610-8538  
hannah@teammates.org - www.teammates.org  
(Together we transform lives)  
\* Silver Level Affiliate

### PLAYGROUND/SCOREBOARDS/SURFACING

Creative Sites, LLC  
Julie Kutilek - 402-614-4606 - 800-266-1250  
julie@creativesitesllc.com  
(Playground equipment and site furnishings)  
\* GOLD LEVEL AFFILIATE

Crouch Recreation  
Eric Crouch - 402-496-2669  
eric@crouchrec.com - www.crouchrec.com  
(Playgrounds, Shelters, Scoreboards, Safety Surfacing & Site Amenities Manufacturers Rep)  
\* PLATINUM LEVEL AFFILIATE

Fisher Tracks, Inc.  
Jordan Fisher - 800-432-3191 - 515-432-3191  
jfisher@fishertracks.com - www.fishertracks.com  
(Installation, Refurbishment & Design Build of All-Weather Running Tracks)

Outdoor Recreation Products  
Don Wilson - 402-289-0400 - don@outdoorrec.net  
www.outdoorrecreationproducts.com  
(Your choice for a reputable playground and splashpad company serving Nebraska)  
\* GOLD LEVEL AFFILIATE

### SAFETY & SECURITY SERVICES

One Source The Background Check Company  
Neal Josten - 402-933-9999  
njosten@onesourcebackground.com  
www.onesourcebackground.com  
(Employment, Volunteer, Contractor Screening)  
\* GOLD LEVEL AFFILIATE

### TECHNOLOGY CONSULTING

PRISM advisors  
Jason Richards - 402-593-8911  
jprichards@prism-advisors.com  
www.prism-advisors.com  
(PEOPLE, PROCESS & SYSTEMS. IT strategic planning and project management through RFP to implementation)

### TECHNOLOGY/SOFTWARE

JMC  
Shelby Valkos - 800-524-8182  
shelby@jmcinc.com - https://www.jmcinc.com/  
(Smart software for even smarter schools)  
\* PLATINUM LEVEL AFFILIATE

Midwest Alarm Services  
Mike Wells - 402-331-6111 - 402-474-3737  
Mike.Wells@mw-as.com  
(Life Safety Systems provider)  
\* GOLD LEVEL AFFILIATE

Sparq Data Solutions  
Craig Caples - 402-423-4951  
ccaples@sparqdata.com - www.sparqdata.com  
(Paperless Board Meetings, Teacher Negotiations, Public Document Management, Document Imaging & Scanning, Online Policy)  
\* PLATINUM LEVEL AFFILIATE

### THERAPY SERVICES

Central Nebraska Rehabilitation Services  
Mary Walsh-Sterup - 308-675-1853 ext. 3222  
mary@cnrehab.com - www.cnrehab.com  
(Providing PT, OT and Speech therapy in the school system)

### TRANSPORTATION

Cornhusker International  
Russ Folts - 402-466-8461 ext 206  
russ.folts@cornhuskerinternational.com  
www.cornhuskerinternational.com  
(With six locations across Nebraska, Cornhusker International offers your best choice in new and pre-owned School Buses, Compliant Activity Buses, plus full parts and service for all makes and models)  
\* GOLD LEVEL AFFILIATE

Master's Transportation  
Mariya Goodbrake - 800-783-3613  
mgoodbrake@masterstransportation.com  
www.masterstransportation.com  
(Your trusted source for safe, reliable, and innovative group transportation solutions.)  
\* GOLD LEVEL AFFILIATE

BOARD NOTES IS PUBLISHED ON A MONTHLY BASIS AS A MEMBER SERVICE. ADVERTISING IS AVAILABLE IN EVERY ISSUE. TO ADVERTISE OR BECOME AN AFFILIATE, PLEASE CONTACT MATT BELKA FOR FURTHER INFORMATION. ARTICLES OR ADVERTISING CONTAINED HEREIN DO NOT NECESSARILY REPRESENT THE VIEWS OR POLICIES OF NASB.





1311 STOCKWELL STREET  
LINCOLN, NE 68502  
WWW.NASBONLINE.ORG

RETURN SERVICE REQUESTED



# NASB BOARD NOTES

A MONTHLY PUBLICATION FROM THE NEBRASKA ASSOCIATION OF SCHOOL BOARDS



LEADERSHIP

INNOVATION

VISION

ENGAGEMENT

#liveNASB

#weLIVEhere

## IN THIS EDITION

LB 644 - THE POSTCARD BILL ... WHAT YOU NEED TO KNOW  
AT THE BOARD TABLE  
LEADERSHIP AT THE LOCAL LEVEL  
NASB PARTICIPATES IN NATIONAL FORUM ON EDUCATION POLICY  
EDUCATION LEADERS FROM NEBRASKA TRAVEL TO GHANA  
NOMINATIONS FOR THE NASB BOARD & LEG COMMITTEE  
UNITY THROUGH COLLECTIVE VOICE  
YOUR NASB BOARD OF DIRECTORS & STAFF  
YOUR 2022 NASB AFFILIATES  
... AND MUCH MORE!

## AS WELL AS "THIS MONTH IN ..."

... ADVOCACY & GOVERNMENT RELATIONS  
... ALICAP & INSURANCE  
... BOARD LEADERSHIP  
... DATA ANALYTICS  
... ENERGY PURCHASING  
... MEMBER ENGAGEMENT  
... POLICY  
... SEARCH, STRENGTHS & AWARDS  
... TECHNOLOGY

JULY 2022

#liveNASB

#weLIVEhere

www.NASBonline.org