



LEADERSHIP

INNOVATION

VISION

ENGAGEMENT



"SMALL SCHOOLS CAN DO THIS TOO ..." SOUTH CENTRAL UNIFIED OPENS THE NEBRASKA CENTER FOR ADVANCED PROFESSIONAL STUDIES

Three years ago, in the March 2016 edition of *Board Notes*, NASB featured the initial ribbon cutting to begin the process of creating a career pathways program for the South Central Nebraska Unified School District, which serves the communities of Clay Center, Deweese, Edgar, Fairfield, Glenvil, Lawrence, and Nelson.

Earlier this month, NASB had the privilege of going back and spending the day with members of the district for a firsthand look of their newly renovated Nebraska Center for Advanced Professional Studies (NCAPS), a state-of-the-art facility built to enhance collaboration and profession-based learning, and provide college and career training for rural students.

First impression, wow! A clean, open collaboration concept, with cross-disciplinary learning that is nothing like the traditional four-walled class room. Since the initial ribbon cutting in 2016, the process and academic curriculum has been in place for the past two school years, with the completion of the building, and students moving over this January.

With all high schoolers participating, every student has the opportunity to push themselves out of their comfort zone a little. South Central Unified School District #5 pays for all tuition, books and fees for all of the dual credit college courses a student can take through the NCAPS program, with 87% of juniors and seniors enrolled in at least one or more college course. During the Fall 2018 semester, 474 college credits were completed by SCUSD students, some individually leaving high school with 20-30 hours.

A key part of the program includes students being paired with a mentor within their field as well. Mentors can be from the area, or statewide, with some students meeting 3-4 times a semester with people as far as Omaha or Lincoln, depending on their field of study.

CONTINUED ON PAGE 2

MARCH 2019

UPCOMING EVENTS

NAEP STATE CONVENTION

March 26-27 | Grand Island

NSBA ANNUAL CONFERENCE

March 30 - April 1 | Philadelphia

** Nebraska Reception - 4-7p ET - March 30 **

SPRING LEGAL WORKSHOPS

April 16 | Gering

April 17 | North Platte

April 24 | La Vista

NEW BOARD MEMBER FOLLOW-UP

June 13 | Kearney

NASB MEMBER GOLF OUTING

June 13 | Kearney

SCHOOL LAW SEMINAR

June 13-14 | Kearney

NASB ORIENTATION

July 24 | Lincoln

#liveNASB



CONTINUED FROM PAGE 1

In addition to the high school students immersed into this culture of learning, all 7th and 8th graders are also taking a variety of exploratory career classes including manufacturing and architecture, and construction courses, exposing them at a much younger age.

Pathways currently offered for college credit include:

- Agriculture
- Business
- Construction, Engineering and Manufacturing
- Education
- Government and Law
- Graphic Arts
- Healthcare
- Transportation

The afternoon's open house and ribbon cutting was the official unveiling to the community, business partners, as well as state and education leaders across Nebraska including Governor Ricketts, and State Senator Dave Murman, a graduate of Sandy Creek High School.

To learn more, watch videos, or go more in-depth on the various offerings, visit the NCAPS website at <https://ncaps.yourcapsnetwork.org/>

NCAPS is part of the CAPS Network, which consists of 50 education partners across 13 states focusing on career and college readiness for high school students. The core principles of the CAPS program are: profession-based learning, professional skills development, responsiveness, self-discovery and exploration, and entrepreneurial mindset. To learn more visit www.yourcapsnetwork.org.



South Central Unified School District #5

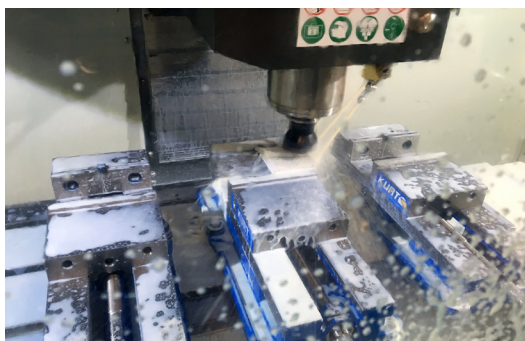
Board of Education

Lance Williams, President
Cheryl Brockman
Philip Brockman
Dwayne Buescher
Chad Dane
Ethan Epley
Donita Furman
Kelsie Kathman
Laurie Kohmetscher
Becky Miller
Brian Shaw
Kim Story

Julie Otero - Superintendent

Enrollment = 592
NASB Region #13

www.southcentralunified.org



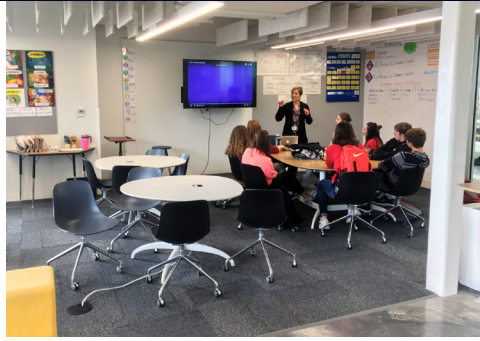
SOUTH CENTRAL UNIFIED OPENS NCAPS (CONTINUED)

NASB
Nebraska Association of
SCHOOL BOARDS

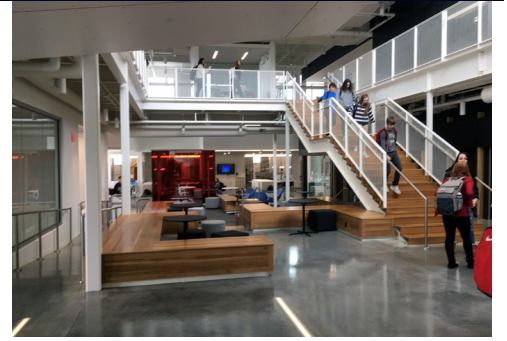
LEADERSHIP



INNOVATION



VISION



ENGAGEMENT



LET NASB KNOW HOW WE CAN HELP

LEADERSHIP

INNOVATION

VISION

ENGAGEMENT

#NEBRASKASTRONG

Our hearts continue to go out to those affected by this month's floods & storms.

If you, your community, your district, or your students need anything, please ask.

In good times and bad we are 1,700 school board members serving 1.9 million Nebraskans in 530 communities. But through it all, we are always 1 Nebraska. It has been incredible to see how this state has rallied, and come together this last week.

For ALICAP districts, if your district has been impacted by the flood water, please contact ALICAP's claims team.

Call Sarah (Hudson) Loftus at 402-963-2861 or Maurice Anderson at 402-955-9903.

If you have any other questions, please visit www.ALICAP.org

1,900,000
NEBRASKANS

312,000
STUDENTS

1,700
SCHOOL BOARD
MEMBERS

260
DISTRICTS/ESU'S

ONE NEBRASKA



PHILLY, HERE WE COME: NEBRASKA RECEPTION

LEADERSHIP

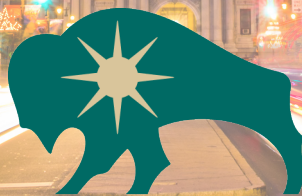
INNOVATION

VISION

ENGAGEMENT

Bringing the Midwest to 1776 Nebraska Reception at the NSBA Conference

Mark Your Calendar
Saturday, March 30 | 4:00 to 7:00 PM
Del Frisco's - Philadelphia



Sponsored by D.A. Davidson & Co.
member SIPC and FINRA

RSVP to Sharon Endorf at sendorf@NASBonline.org
Conference attendees and their guests are welcome to attend

LEADERSHIP

INNOVATION

VISION

ENGAGEMENT



NASB's natural gas programs were created to fulfill two needs that many local districts had in dealing with utility costs – competitive prices and budget certainty. NASB has over 100 school districts and ESUs across Nebraska participating in our NJUMP and CJUMP purchasing consortiums to leverage their purchasing power and achieve lower utility bills. With this year's high gas usage, we have recently added several new members for next year.

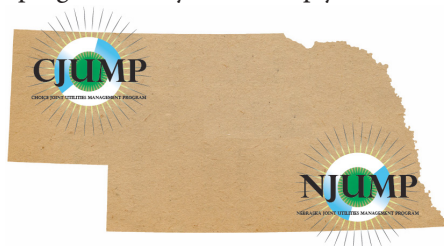
Rather than pricing the entire year's gas needs on one day, the consortiums lock in fixed prices as market opportunities become available by purchasing in layers over time and in percentages of total projected volumes. Historically, this approach has achieved a better price for natural gas with a higher level of budget certainty than the districts could have achieved on their own.



The Nebraska Joint Utilities Management Program (NJUMP) purchases natural gas for school districts and ESUs on the Black Hills Energy natural gas pipeline in southeast Nebraska. Choice Joint Utilities Management Program (CJUMP) supplies natural gas on the SourceGas distribution system in northern, central and western Nebraska. Both programs operate as independent Interlocal Pools created and governed by their own Board of Trustees drawn from consortium members. The trustees hold their annual meeting at the State Education Conference in LaVista each November. NJUMP works with CenterPoint Energy Services, Inc, as its program administrator. CJUMP works with Public Alliance for Community Energy (ACE) in a similar capacity. Both companies provide a wide range of energy products and services to various users of natural gas and can provide an individual user analysis for interested school districts or ESUs.

Now is the time to sign up for membership in NJUMP or CJUMP for the 2019-2020 heating season. For more information, NASB members on the Black Hills Energy distribution system can contact Michelle Kluver of CenterPoint Energy Services at 402-992-8112 and members on the SourceGas distribution system can contact Mandy Heermann of Public Alliance for Community Energy at 800-454-4759.

Jim Luebke of the NASB staff can also discuss the program with you and help you enroll in this time-saving, dollar-stretching consortium.



SPRING LEGAL WORKSHOPS: SCHOOL LAW FOR BOARD MEMBERS

SCHOOL BOARDS

LEADERSHIP

INNOVATION

VISION

ENGAGEMENT

REGISTRATION IS NOW OPEN FOR THE SPRING LAW WORKSHOPS!

Perhaps the most imposing demand society places on school board members is the requirement that they know, and adhere to, the intent and limitations of the law. Nearly everything your board does is influenced by statutory regulations.

Your board has a duty to be informed about the basics of school law and when to reach out for legal services. This workshop, taught by attorneys who work with school law on a regular basis, will get you started in the right direction by presenting basic knowledge about the law, as it directly relates to your board service.

This workshop is a “must” for all people serving in a position of school leadership. Both new and veteran board members will come away with a legislative update and fundamental concepts of school law which locally elected school board members need to know.

School Law for Board Members Workshop | 5:15 to 9:00 PM

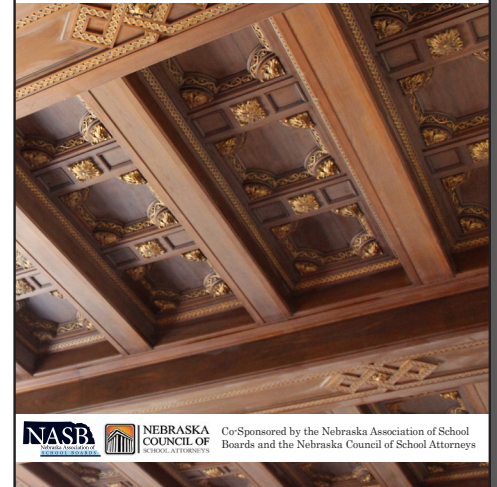
Tuesday, April 16 | Gering Civic Center
Jerald Ost diek & John L. Selzer

Wednesday, April 17 | Holiday Inn Express North Platte
Larry Baumann, Cindy Volkmer & Justin Knight

Wednesday, April 24 | ESU 3 - La Vista
Nicholas Lesiak, David Kramer & Megan Neiles-Brasch

SCHOOL LAW FOR BOARD MEMBERS A PRIMER AND LEGISLATIVE UPDATE

April 16 | Gering April 17 | North Platte April 24 | La Vista



TO SEE THE FULL AGENDA
AND REGISTER, VISIT
WWW.NASBONLINE.ORG

"LEADERSHIP AND LEARNING ARE INDISPENSABLE TO EACH OTHER."
JOHN FITZGERALD KENNEDY

The 2019 Board President Retreat marks the sixth year and opportunity for board presidents, board members, and superintendents to engage in best practice discussion and dialogue related to board-superintendent relations and effective board governance. As a facilitator, this ranks as one of my favorite workshops. I have the opportunity to engage in great discussion and learning along with our members. Each year the Association also receives very positive feedback from board members and superintendents alike.

"This is one of the best NASB workshops I have ever attended."

"I felt it was good to be here with my board president. The dialogue was excellent, and we were hearing the same message."

The day and a half workshop covered a variety of topics including, but not limited to: the role of the board president when working with the superintendent and board members, board meeting protocol and procedures, committee work, policy, problem solving (of course, for a friend not my district), district planning and goals, board's role related to student achievement, the importance and the impact of quality board governance and superintendent leadership, etc.

Thank you to the 37 school districts and ESU 4 for participating in the Kearney and Lincoln 2019 President Retreats:

Ainsworth | Ansley | Beatrice | Bellevue | Brady | Callaway | Cedar Bluffs | Centura | Central City | Chadron
Columbus | Cozad | Creek Valley | Creighton | ESU 4 | Elba | Elm Creek | Fairbury | Freeman | Giltner
Grand Island | Harvard | Hemingford | Hershey | Minden | Nebraska City | North Platte | Omaha | Osceola
Palmyra | Pleasanton | St. Paul | Stapleton | Sterling | Superior | Tri County | Wallace | Winnebago



CERTIFIED Contractors

Giving our brighter tomorrow, a safer today.

One Source Certified Contractors (OSCC) is our comprehensive site access program. This program verifies each contractor entering your school is held to the same high standards as the rest of your staff. The best part? OSCC program is completely **free** for schools to join.

How does OSCC work:

One Source conducts our TotalCheck® PLUS screening process on contractors working at participating sites. Participating sites can review an online certificate of pass or fail contractor status. Upon request, badges are available.

Who qualifies as a contractor:

- General Contractors
- Food Services
- Enrichment Programs
- Outside Services
- And more



Contact us today to learn more about becoming an OSCC participating site!
800.608.3645 ext. 1 oscc@onesourcebackground.com onesourcebackground.com

WHAT TO KNOW RE: STATE CONFERENCE HOTEL ROOMS

LEADERSHIP

INNOVATION

VISION

ENGAGEMENT

RE: STATE ED CONFERENCE HOTEL ROOMS

THIS YEAR THERE WILL BE NO HURRY TO BOOK YOUR HOTEL ROOMS!

BETWEEN THE HILTON AND OMAHA MARRIOTT DOWNTOWN, WE WILL HAVE ENOUGH ROOMS TO ACCOMMODATE ALL ATTENDEES.

IN ORDER TO FULFILL OUR COMMITMENT TO THE HOTELS, PLEASE WAIT UNTIL AFTER REGISTRATION HAS OPENED AND BOOK YOUR ROOMS THROUGH THE OFFICIAL ONLINE RESERVATION PROCESS.

WITH THE MOVE TO CHI HEALTH CENTER, MORE HOTELS ROOMS ARE AVAILABLE ALLOWING YOU TO BOOK YOUR ROOM AT A MORE COMPETITIVE RATE WITHIN OUR BLOCK.

PARKING WILL BE AVAILABLE WITHIN ONE BLOCK OF BOTH HOTELS FOR AN ADDITIONAL FEE.

#liveNASB



ANNUAL NASB MEMBER GOLF OUTING

JUNE 13 | KEARNEY COUNTRY CLUB



EMAIL SENDORF@NASBONLINE.ORG TO PARTICIPATE

... ALICAP & INSURANCE

ALICAP's March Safety Topic is "Playground Safety." As the winter weather hopefully fades and spring weather begins, ALICAP urges schools to carefully inspect the outdoor playground equipment before releasing students to play on the equipment. Playgrounds are fun, but let's make sure we're keeping them safe.

*Attention ALICAP members:
If your district has been impacted by the flood water, please contact ALICAP's claims team. Call Sarah (Hudson) Loftus at 402-963-2861 or Maurice Anderson at 402-955-9903.*

Thanks, Megan!

... WHOLE CHILD

Michael Boyd, a h.s. physics teacher shared in his article for *Edutopia* the way he incorporates social-emotional learning in his classes:

"Additionally, I try to weave a social and emotional or service element into every physics assignment I create. 'Inclined Planes for a Purpose' is a lab in which we research and model handicapped-accessible ramps made to the specifications of the Americans with Disabilities Act. Activities like this one drive the academic success in our class, but they also foster an attitude of compassion, which I'd argue is as important to students' personal development, if not more so."

Contact Kori for all things WCP

... SEARCH & STRENGTHS

AWARDS OF ACHIEVEMENT:
Reminder to check your points!
Contact Lisa or Shari with questions on your points

GALLUP
People high in Dependability are driven, reliable and independent

Email sbecker@nasbonline.org to schedule a Gallup board session

-Shari -

... POLICY

NDE is conducting fairly thorough Title 1 policy reviews of district manuals this year. All districts participating in federal grants should have a policy in place that deals with keeping a current inventory of equipment purchased with grant funds and also a set of policy guidelines for disposing of that equipment when it is no longer useful.

Contact Jim to learn more!

... ENERGY PURCHASING

It's been an extremely cold winter with all users reporting very high volumes of natural gas usage. Our NJUMP and CJUMP Interlocal gas purchasing program members have saved a great deal of money by purchasing their gas at highly competitive rates over the last year. We are also receiving many inquiries from districts interested in being in these programs for the 2020-2021 heating season. This is a good time to get the paperwork for delegations agreements if you wish to join by the upcoming year.

Contact Jim to learn more!



Paul Grieger
(800) 528-5145
pgrieger@dadco.com



Cody Wickham
(866) 809-5596
cwickham@dadco.com



Andy Forney
(866) 809-5443
aforney@dadco.com

Building a better future with Nebraska's Public Finance Partner

D.A. Davidson & Co. has long been a leader in innovative debt financing for school districts. What we're most proud of are the relationships we've nourished and the strong community improvements that are made as a result.

Our public finance professionals take a personal interest and a hands-on approach, carrying our deals from start to finish. Because you deserve solutions tailored to fit you.

- Tax Anticipation / Construction Notes
- Bond Underwriting Services
- Lease-Purchase Financing
- QCPUF Bonds



D | A | DAVIDSON

450 Regency Parkway, Suite 400 | Omaha, NE 68114
dadavidson.com | D.A. Davidson & Co. member FINRA and SIPC

LEADERSHIP

INNOVATION

VISION

ENGAGEMENT

... MEMBER ENGAGEMENT

March visits include:
Bridgeport, Bruning-Davenport,
Sioux County, St. Edward,
West Holt & Wheeler Central

The 2019-2020 NASB Membership campaign continues! Remember, all dues in by April 1 receive the discounted rate.

- Sharon -

... BOARD LEADERSHIP

Have car can drive! If you and your board are interested in a local workshop to discuss goals, roles and responsibilities, etc. please contact Marcia at mherring@nasbonline.org

800-422-4572!

Marcia, Kori & Melissa

... TECHNOLOGY

Follow Sparq on the web, on Twitter and on Facebook for all the latest updates.

www.SparqData.com

https://twitter.com/sparq_data

<https://www.facebook.com/SparqData>

ADVOCACY & GOVERNMENT RELATIONS

Committee Hearings are coming to an end, and we are at the halfway point of the 90-Day Session.

Priority Bills have been selected.

Engagement from local school board members continue to be incredible!

We have had school board members from over 30 districts engage with the Senators on various items, come to Lincoln to testify or meet with their Senators.

Thanks for continuing to share your stories!

Keep tabs on everything on NASB's Bills page under the Government Relations section of the NASB website.

- Call Colby with any questions! -
#liveNASB

Tell Your Story: THE POWER OF COMMUNICATION

Hosted by the Nebraska School Public Relations Association

A premier opportunity to enhance communication in public schools, the non-profit sector, and for the Midwest's leading professionals. Nationally recognized communications expert Tom DeLapp shares the power and importance of communication to build trust, gain support, and engage your audience.



TOM DeLAPP
President, Communication
Resources for Schools

APRIL 12, 9:00 am - 2:00 pm

- **Omaha Press Club**
1620 Dodge Street
- **Register by April 5th at: nepspra.org/luncheon**
- **\$60 Luncheon, Seminar & NebSPRA Membership**
\$50 Luncheon + Morning Seminar
\$35 Luncheon Only

**BEST
DEAL!**
Save \$25!



Respected experience in internal and external school communication

A network of respected leaders in school communication from across the state of Nebraska, working together to help all public schools best communicate with employees, families and communities.

@NebSPRA nepspra.org

Board Notes is published on a monthly basis as a member service. Advertising is available in every issue. To advertise or become an Affiliate, please contact Matt Belka for further information. Articles or advertising contained herein do not necessarily represent the views or policies of NASB.

Nebraska Association of School Boards | 1311 Stockwell Street - Lincoln, NE 68502 | Matt Belka, Editor | John Spatz, Publisher

LEADERSHIP

INNOVATION

VISION

ENGAGEMENT

Join NASB, as we travel the state for various workshops, meetings and events throughout the year.
To learn more, and register, visit the Events tab of www.NASBOnline.org

<http://members.nasbonline.org/index.php/events>



NAEP State Convention | March 26-27 | Grand Island

Maximizing Your Impact

NEXT
WEEK!

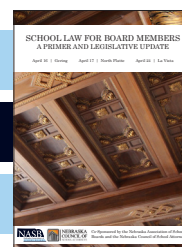
NSBA Annual Conference | March 30 to April 1 | Philadelphia
Nebraska Reception | Saturday, March 30 - 4:00 to 7:00 PM | Del Frisco's

NEXT
WEEK!

Spring Legal Workshop | April 16 | Gering

Spring Legal Workshop | April 17 | North Platte

Spring Legal Workshop | April 24 | La Vista



2019 Nebraska School Mental Health Conference | June 11-12 | Kearney

[HTTP://WWW.THEKIMFOUNDATION.ORG/NE-SCHOOL-MENTAL-HEALTH.HTML](http://WWW.THEKIMFOUNDATION.ORG/NE-SCHOOL-MENTAL-HEALTH.HTML)

New Board Member Follow-Up Retreat | June 13 | Kearney

NASB Member Golf Outing | June 13 | Kearney

School Law Seminar | June 13-14 | Kearney

NASB Orientation | July 24 | Lincoln

Area Membership Meetings | August & September

AUGUST 20 VALENTINE	AUGUST 21 FREMONT	AUGUST 22 LA VISTA
AUGUST 26 GERING	AUGUST 27 NORTH PLATTE	AUGUST 28 KEARNEY
SEPTEMBER 4 YORK	SEPTEMBER 18 NEBRASKA CITY	SEPTEMBER 25 NORFOLK

Board Presidents: Check your inbox each month for the monthly 'NASB Update' to include in your meeting agenda.
Please contact mbelka@NASBOnline.org with any questions.

YOUR NASB BOARD OF DIRECTORS & STAFF



YOUR NASB LEADERSHIP TEAM



Steve Blocher
President
West Point



Stacie Higgins
President-Elect
Nebraska City



Brad Wilkins
Vice President
Ainsworth



Lanny Boswell
Past President
Lincoln

YOUR REGION DIRECTORS



Region 1
Neal Kanel
HTRS



Region 2
Sarah Centineo
Bellevue



Regions 3, 6 & 7
Shavonna Holman
Omaha



Regions 3, 6 & 7
Ricky Smith
Omaha



Regions 3, 6 & 7
Nancy Kratky
Omaha



Regions 4 & 5
Connie Duncan
Lincoln



Regions 4 & 5
Kathy Danek
Lincoln



Region 8
Jay Irwin
Ralston



Region 9
Alan Moore
ESU 3



Region 10
Paul Brune
Heartland



Region 11
Jim Vlach
Lyons-Decatur Northeast



Region 12
Lisa Wagner
Central City



Region 13
Marilyn Bohn
Ravenna



Region 14
Sandy Noffsinger
Dundy County Stratton



Region 15
Barb Svoboda
Mullen



Region 16
Patti Gubbels
Norfolk



Region 17
Richard Dohma
Ponca



Region 18
Kim Burry
Bayard



Region 19
Stacy Jolley
Millard

YOUR NASB STAFF



John Spatz
Executive Director



Shari Becker
Director of Education
Leadership Search Service



Craig Caples
Director of Technology



Marcia Herring
Director of Board Leadership



Kori Stanosheck
Board Leadership
Engagement Associate



Matt Belka
Director of Marketing,
Communications & Advocacy



Dan Clarke
Systems Engineer



Rachel Horstman
Business Manager



Lisa Steinkuhler
Executive Admin. Assistant



Megan Boldt
Director of ALICAP Insurance



Sharon Endorf
Director of
Member Engagement



Jim Luebke
Director of Policy Services



Sallie Svatora
Director of Operations



Colby Coash
Associate Executive Director/
Dir. of Government Relations



Makenzie Brookhouser
ALICAP & Events Manager



Jen Goetz
Accounting/Data Specialist



Melissa Lusk
Board Leadership
Development Associate



Vicki Walter-Winters
Legal Admin. Assistant

LEADERSHIP

INNOVATION

VISION

ENGAGEMENT

ACCOUNTING

Watts and Hershberger, P.C.
Jim Watts - 402-483-7512
jw1cpa@aol.com | www.gowh.com
(CPA, Accounting)

ARCHITECTS

BVH Architecture
Cleve Reeves - 402-475-4551
creeves@bvh.com - www.bvh.com
(Architecture)
*Silver Level Affiliate

CMBA Architects
Brad Kissler - 308-384-4444
kissler.b@cmbaarchitects.com
Jim Brisnehan - 308-384-4444
brisnehan.j@cmbaarchitects.com
Troy Keilig - 308-384-4444
keilig.t@cmbaarchitects.com
www.cmbaarchitects.com
(Architecture, Master Planning,
Interiors, Bond Promotion/
Community Engagement)
* GOLD LEVEL AFFILIATE

Carlson West Povondra Architects
Jamie Eckmann - 402-551-1500
jeckmann@cwparhitects.com
www.cwparhitects.com
(Architecture, planning,
feasibility studies)
* GOLD LEVEL AFFILIATE

DLR Group
Vanessa Schutte - 402-393-4100
vschutte@dlrgroup.com
www.dlrgroup.com
(Architecture, engineering,
Ed. facility planning)

The Schemmer Associates Inc.
Terry Wood, AIA - 402-493-4800
twood@schemmer.com
Molly Macklin - 402-493-4800
mmacklin@schemmer.com
www.schemmer.com
(Architecture, engineering,
educational facility planning)

AWARDS & PLAQUES

Awards Unlimited
Larry King - 402-474-0815
larryking@awardsunlimited.com
www.awardsunlimited.com
(Trophies, awards, plaques, etc.)

BUILDING CONTROLS/ SERVICES

Control Management Inc.
Nathan Haug - 402-571-9454
nathan@cmiomaha.com
www.cmiomaha.com
(Building Automation, Security and
Energy Optimization for New and
Existing Systems)

Duro-Last Roofing
Mark Akagi - 785-232-6563
mark@morrisgrup.com
www.duro-last.com
(Representative for Duro-Last
roofing system)

CONSTRUCTION SERVICES

BD Construction
Marsha Wilkerson - 308-234-1836
mwilkerson@bdconstruction.com
www.BDconstruction.com
(Site Selection, Facility Planning,
Engineering, Permitting,
Build to Suit)
*GOLD LEVEL AFFILIATE

Boyd Jones Construction
Emily Bannick - 402-550-1808
ebannick@boydjones.biz
www.boydjones.biz
(Construction Management, Pre-
Bond, Pre-Construction, Facility
Evaluation, Early Stage Planning)
* GOLD LEVEL AFFILIATE

Cheever Construction
Douglas Klute - 402-477-6745
dklute@cheeverconstruction.com
www.cheeverconstruction.com
(Construction Services)

Heartland Pella Windows & Doors
Dennis Feeken - 800-334-2271
dennisfeeken@heartlandpella.com
www.heartlandpella.com
(Commercial Window & Door
Solutions)

ENERGY SERVICES

Ameresco, Inc.
David Goebel - 308-392-3283
402-370-8822
dgoebel@ameresco.com
www.ameresco.com
(Capital Improvements, Energy
Efficiency & Renewable Energy
Solutions for Buildings)
* GOLD LEVEL AFFILIATE

ENERGY SERVICES

CTS Group
Randy Harrick - 402-680-6390
rherrick@ctsgroup.com
www.ctsgroup.com
(Provides safe, secure learning and
working environments)
* GOLD LEVEL AFFILIATE

Johnson Controls
Jason Peck - 308-708-9479
jason.peck@jci.com - www.jci.com
(HVAC, Building Automation,
Service Agreements, Security and
Fire, among others)
* GOLD LEVEL AFFILIATE

TRANE
Dave Raymond
402-596-8000 - 402-452-7762
dave.raymond@trane.com
www.trane.com/omaha
(Building Construction &
Energy Services)
* GOLD LEVEL AFFILIATE

EQUIPMENT AND FURNITURE

Sheppard's Business Interiors
Ken Sigmon - 402-393-8888
ksigmon@sbi-omaha.com
www.sbi-omaha.com
(Furniture, Space Planning, Asset
Management)

FINANCIAL SERVICES

Ameritas Investment Corp.
Jay Spearman
jspearman@ameritas.com
Scott Keene
skeene@ameritas.com
Brad Slaughter
bslaughter@ameritas.com
Marc Munford
mmunford@ameritas.com
Bruce Lefler
blefler@amertias.com
Dallas Watkins
dallas.watkins@ameritas.com
800-700-2362 - 402-384-8088
(Bonds, Refunding Bonds,
QCPUF Bonds, TANs,
NASB Lease-Purchase)
* GOLD LEVEL AFFILIATE

FINANCIAL SERVICES

D.A. Davidson & Co.
Paul Grieger - 402-392-7986
pgrieger@dadco.com
Cody Wickham - 402-392-7989
cwickham@dadco.com
Andy Forney - 402-392-7988
aforney@dadco.com
www.dadavidson.com
(Bonds/Election Services, Lease
Purchase)
* GOLD LEVEL AFFILIATE

First National Capital Markets
Tobin Buchanan - 308-352-8328
tbuchanan@fnni.com
www.fncapitalmarkets.com
(Public Finance, Election Guidance)
* GOLD LEVEL AFFILIATE

First Nebraska Credit Union
Elly Heckel - 402-492-9100
marketing@firstnebraska.org
www.firstnebraska.org
(Taking care of your
financial needs!)

Nebraska Liquid Asset Fund - NLAFF
Barry Ballou - 402-705-0350
balloub@pfm.com
www.NLAFFpool.org
(Liquid Asset Fund,
financing programs)
* GOLD LEVEL AFFILIATE

Nebraska Public Agency
Investment Trust
Becky Ferguson - 402-323-1334
becky.ferguson@ubt.com
www.npait.com
(Cash management tool for
short-term and long-term funds)
* GOLD LEVEL AFFILIATE

Union Bank & Trust
Health Benefit Solutions
Jennifer Ainsworth - 402-323-1815
jennifer.ainsworth@ubt.com
www.ubt.com/health
(Financial Services, Banking)
* Silver Level Affiliate

Wells Fargo Bank
Andrew J. Detlefsen - 402-434-6701
andrew.j.detlefsen@wellsfargo.com
www.wellsfargo.com
(Financial Services, Banking)

NASB AFFILIATES

LEADERSHIP

FOOD SERVICE

Lunchtime Solutions
Deni Winter
605-235-0939 Ext 106
deni@lunchtimesolutions.com
www.lunchtimesolutions.com
(Progressive Food
Service Management)
* GOLD LEVEL AFFILIATE

Opaa! Food Management of Nebraska
Greg Frost - 636-812-0777
www.opaafood.com
(Contract Food Service
Management)

Taher, Inc. - Food Service Management
Tom Johnson - 952-945-0505
t.johnson@taher.com
www.taher.com
(Providing a fresh take on Food
Service Management)
* GOLD LEVEL AFFILIATE

INSURANCE SERVICES

Blue Cross Blue Shield of Nebraska
Courtney Ray - 402-458-4823
courtney.ray@nebraskablue.com
www.nebraskablue.com
(Group health insurance)
* GOLD LEVEL AFFILIATE

National Insurance Services
Steve Ott - 800-627-3660
sott@nisbenefits.com
www.nisbenefits.com
(Group LTD, Life, Vision,
Special Pay Plans, HRA's)

Public Risk Management
Sheri Shonka
402-884-3751 - 877-649-4612
sheri.shonka@prmne.com
www.alicap.org
(ALICAP, Insurance services)
* GOLD LEVEL AFFILIATE

LEGAL SERVICES

Mueller Robak, LLC
William Mueller - 402-434-3399
mueller@muellerrobak.com -
(Lobby firm)

INNOVATION

MECHANICAL CONSTRUCTION

Rasmussen Mechanical Services
Jennifer Coggins - 712-323-0514
jennifer.coggins@rasmech.com
www.rasmech.com
(Your Single Source Service
Provider)

MENTORING

TeamMates Mentoring
Hannah Miller - 319-610-8538
hannah@teammates.org
www.teammates.org
(Together we transform lives)
* GOLD LEVEL AFFILIATE

PLAYGROUND/ SCOREBOARDS/ SURFACING

Creative Sites, LLC
Julie Kutilek
402-614-4606 - 800-266-1250
julie@creativesitesllc.com
(Playground equipment and
site furnishings)
* GOLD LEVEL AFFILIATE

Crouch Recreation
Eric Crouch - 402-496-2669
eric@crouchrec.com
www.crouchrec.com
(Playgrounds, Shelters, Scoreboards,
Safety Surfacing & Site Amenities
Manufacturers Rep)
* GOLD LEVEL AFFILIATE

SAFETY & SECURITY SERVICES

One Source
The Background Check Company
Neal Josten
800-608-3645 ext. 5600
njosten@onesourcebackground.com
www.onesourcebackground.com
(Employment, Volunteer,
Contractor Screening)
* GOLD LEVEL AFFILIATE

VideoTronix Inc.
David Harvey - 402-210-2839
david.harvey@vtisecurity.com
www.vtisecurity.com
(IP Video Surveillance, Networks,
Access Control, Storage)

VISION

STUDENT INFORMATION SERVICES

JMC Computer Services
Paul Freid - 651-345-4654
Paul@jmcinc.com
www.jmcinc.com
(Easy ADVISOR reporting and
student information management)
* GOLD LEVEL AFFILIATE

TECHNOLOGY CONSULTING

PRISM advisors
Jason Richards - 402-593-8911
jprichards@prism-advisors.com
www.prism-advisors.com
(PEOPLE, PROCESS & SYSTEMS.
IT strategic planning and project
management through RFP to
implementation)
* GOLD LEVEL AFFILIATE

TECHNOLOGY/ SOFTWARE

Sparq Data Solutions
Craig Caples - 402-423-4951
ccaples@sparqdata.com
www.sparqdata.com
(Paperless Board Meetings, Teacher
Negotiations, Public Document
Management, Document Imaging &
Scanning)
* GOLD LEVEL AFFILIATE

THERAPY SERVICES

Central Nebraska
Rehabilitation Services
Mary Walsh-Sterup
308-675-1853 ext. 3222
mary@cnrehab.com
www.cnrehab.com
(Providing PT, OT and Speech
therapy in the school system)

TRANSPORTATION

Body Worx Inc.
Josh Goodbrake - 308-293-3109
josh.bodyworx@gmail.com
www.bodyworxrepair.com
(Commercial Vehicle Collision
Center Specializing in School
Busses and Motor Coaches)
*Silver Level Affiliate

ENGAGEMENT





1311 STOCKWELL STREET
LINCOLN, NE 68502
WWW.NASBONLINE.ORG

RETURN SERVICE REQUESTED



NASB BOARD NOTES

A monthly publication from the Nebraska Association of School Boards



LEADERSHIP

INNOVATION

VISION

ENGAGEMENT

IN THIS EDITION

"SMALL SCHOOLS CAN DO THIS TOO ..."
LET NASB KNOW HOW WE CAN HELP
PHILLY, HERE WE COME: NEBRASKA RECEPTION
RELY ON NASB'S NATURAL GAS PROGRAMS
SPRING LEGAL WORKSHOPS: SCHOOL LAW FOR BOARD MEMBERS
WHAT TO KNOW RE: STATE CONFERENCE HOTEL ROOMS
TRAINING, NETWORKING, ENGAGEMENT & EVENTS
YOUR NASB BOARD OF DIRECTORS & STAFF
... AND MUCH MORE!

AS WELL AS "THIS MONTH IN ..."

... ADVOCACY & GOVERNMENT RELATIONS
... ALICAP & INSURANCE
... BOARD LEADERSHIP
... ENERGY PURCHASING
... MEMBER ENGAGEMENT
... NEBRASKA WHOLE CHILD PROJECT
... POLICY
... SEARCH & STRENGTHS
... TECHNOLOGY