

# NASB BOARD NOTES

A MONTHLY PUBLICATION FROM THE NEBRASKA ASSOCIATION OF SCHOOL BOARDS

NOVEMBER  
20-22



Leadership

Innovation

Vision

Engagement

#liveNASB

#weLIVEhere

1,960,000 Nebraskans

324,000 Students

1,700 Locally Elected School Board Members

260 Member Districts/ESUs

ONE NEBRASKA

## WORKING TOGETHER DOES WIN!

<http://members.nasbonline.org/index.php/state-education-conference>

Wow! Another incredible week in Omaha with 1,100 of our closest friends, learning, networking, engaging and working together!

### TAKEAWAYS FROM THIS YEAR'S CONFERENCE INCLUDE:

Two engaging Pre-Conference sessions on Educator Shortage & Civil Discourse.

50 breakout sessions on a wide variety of topics.

Papillion La Vista High School Concert Choir kicked things off Thursday morning.

Jeff Evans guided us through the storm.

Marcia Mahon of South Sioux City Community Schools was honored as this year's Ann Mactier School Board Member of the Year!

Molly Kennedy closed the conference by teaching us how to best flip our "20 cent".

NASB debuted this year's video "To The Class Of ..." - watch it now at NASB's Video page.

Students from districts across the state participated in the Student Voices breakout, and in Friday's Classroom Showcase.

Mark Lenihan of Wayne Community Schools was recognized as Superintendent of the Year!

Don Ellison was recognized as he has served on the ESU 7 Board of Education 51 years!

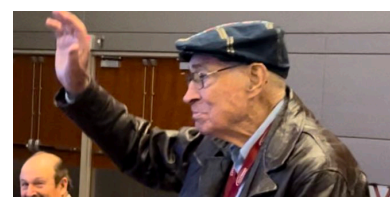
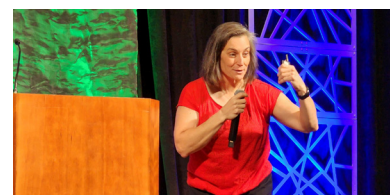
The annual NASB Delegate Assembly set the legislative and leadership initiatives for the Association and its members for 2023.

Outgoing President Brad Wilkins of Ainsworth passed the gavel to incoming President Kim Burry of Bayard, and Stacy Jolley of Millard was elected incoming Vice President.

Head to the State Education Conference page of [www.NASBOnline.org](http://www.NASBOnline.org) now for links to access the session handouts and conference evaluation.

Visit NASB's Twitter Page at <https://twitter.com/NASBOnline> to look back on everyone's posts, pictures and more from last week!

*Thank you to everyone who took the time to attend, present, serve, exhibit, and network. We always look forward to seeing you throughout the year and each November. Mark your calendars now for the 2023 State Education Conference. November 15-17, 2023, at the CHI Health Center - downtown Omaha!*



# TRAINING, NETWORKING, ENGAGEMENT & EVENTS

Leadership

Innovation

Vision

Engagement

#liveNASB

#weLIVEhere



1,960,000 Nebraskans

324,000 Students

1,700 Locally Elected School Board Members

260 Member Districts/ESUs

ONE NEBRASKA

<http://members.nasbonline.org/index.php/events>



Your Monthly Board Agenda Update Video Links from NASB

<http://members.nasbonline.org/index.php/news-resources/videos>



13th Annual Nebraska Children's Health & Education Summit - November 30 - Boys Town



New Board Member Workshops - December

DECEMBER 5 - GERI

DECEMBER 8 - YORK

DECEMBER 6 - NORTH PLATTE

DECEMBER 13 - LA VISTA

DECEMBER 7 - KEARNEY

DECEMBER 14 - NORFOLK



NASB's Legislative Issues Conference - January 22-23 - Lincoln

NASB Board President Retreat - January 29-30 - York



NASB Board President Retreat - February 5-6 - Ogallala

Budget & Finance Workshop - February 8 - Kearney

Budget & Finance Workshop - February 15 - La Vista

# THE ANNUAL PASSING OF THE GAVEL

Leadership

Innovation

Vision

Engagement

#liveNASB

#weLIVEhere



1,960,000 Nebraskans

324,000 Students

1,700 Locally Elected School Board Members

260 Member Districts/ESUs

ONE NEBRASKA

<http://members.nasbonline.org/index.php/brdofdirectors>

“Use your position to make a difference and have fun doing it.”

“What’s next?”

“Who is your why?”

At the annual NASB Delegate Assembly, outgoing President Brad Wilkins of Ainsworth concluded his year as President, and passed the ceremonial gavel to Kim Burry of Bayard.

As Burry addressed those in the audience, she thought back at what those before her not only said, but how they then carried out those words in their time as your NASB President.

“I have big shoes to fill,” Burry said, “but it is our collaboration as an Officer team, alongside the entire NASB Board of Directors, and the work we do with our locally elected peers inside our individual communities and board rooms that keeps public education in Nebraska as strong as it is.”

“The past few years have looked a little different for all of us. There’s been a little more noise inside and outside the board room, and throughout our communities, but I think we’ve learned how to stand our ground, share our stories, and when necessary, pivot and incorporate some good, new ideas.”

“While it’s always been an open invitation, a reemphasis on partnering with parents has shown the importance of that two-way street. While outside voices have worked to erode the trust between parents, communities and our schools, we as leaders have continued to speak up, share what’s actually taking place in our buildings, and model healthy relationships. First and foremost, we’re parents too.”

“I believe the noise has only strengthened our ability as locally elected community, and state leaders to unite and work together, to brush off the preconceived notion of east vs west, rural vs urban, equalized vs non-equalized. In this room are conservatives and liberals, Democrats and Republicans. Working together, all fighting for all Nebraska kids.”

*“It is why school boards work. A group of volunteer, community minded leaders, working together for the betterment of all.”*

Joining Kim in Omaha was Burry’s husband Brent and their three children, Bryce, Grace and Brock. In addition to Burry taking over as President, Stacy Jolley of Millard was elected to serve as NASB’s Vice President. Your 2022 President Brad Wilkins of Ainsworth moves to Past President. Sandy Noffsinger of Dundly County Stratton will begin her second year as an Officer, moving from Vice President, to President-Elect, and will serve as President in 2024. Pictured L to R in the second photo above are past, present and future NASB Presidents Stacy Jolley (2025), NASB’s John Spatz, Sandy Noffsinger (2024), Kim Burry (2023), Brad Wilkins (2022), Stacie Higgins (2020-21), and Steve Blocher (2019).





# PLATTSMOUTH ADDS NEW CTE ADDITION

Leadership

Innovation

Vision

Engagement

#liveNASB

#weLIVEhere



1,960,000 Nebraskans

324,000 Students

1,700 Locally Elected School Board Members

260 Member Districts/ESUs

ONE NEBRASKA



## PLATTSMOUTH COMMUNITY SCHOOLS

### BOARD OF EDUCATION

Steve Barr, President

Bob Fuller, Matt Gulp, Brian Harvey,

Max Muller, Nolan Siemonsma,

Karen Tesarek-Parsons, Cory Wehrbein,

Ken Winters. Rich Hasty, Superintendent

Enrollment = 1,480

NASB Region #10

[www.pcsd.org](http://www.pcsd.org)

*Working together to achieve Academic success, respectful Behavior, and Career readiness in a Safe environment*

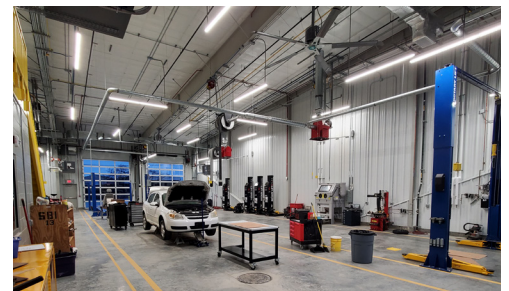
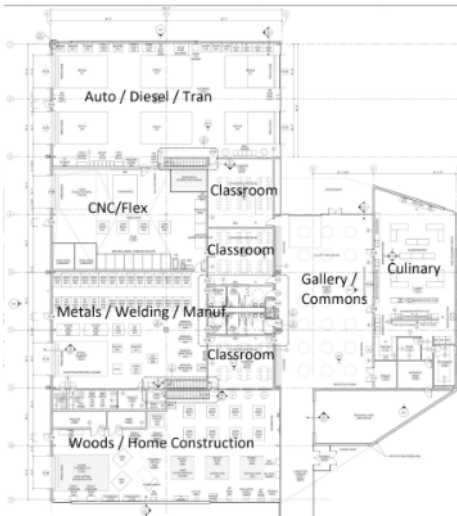
A recent tour of Plattsmouth's newly finished Career and Technical Education Center (CTE) left us with simply one word ... wow!

What started as an idea back in 2017 is now complete. The patrons of the district passed a \$15 million bond that included a new 24,000 square foot CTE Center to support the growth of culinary arts, agriculture education, woods and home construction, welding/metals and manufacturing, CNC, and auto/diesel transportation opportunities for their students.

Plattsmouth High School, already a nationally recognized wall-to-wall academy high school where every high school student has the opportunity to participate in one of three academies located right on campus, now adds the above opportunities for its students to the following. ATEAM (Architecture and construction, transportation and logistics, environment and agriculture, art, and manufacturing), BEACH (Business, marketing and management, education, AV technology and fine arts, communications, and human services and hospitality), STEAM (Science, technology, engineering, aeronautics, and mathematics).

The new addition was designed on industry, with the help of Metro Community College in Omaha. The professional kitchens look just like what a prospective chef will walk into and create from down the road. The auto/diesel shop, just like those looking to hire. With tools, machines, and processes setup for a seamless transition into the real world, this is huge for future employers, and something the taxpayers in the district should be thrilled with.

*To learn more about the Plattsmouth Community Schools CTE Center, the process, take a tour, best practices and more, contact Superintendent Rich Hasty, at [rhasty@pcsd.org](mailto:rhasty@pcsd.org)*



*"With 59.6% of our voters approving our bond in 2019, we were able to build a CTE Center that significantly enhanced opportunities for our students in the skilled trades. I believe PCS is at the forefront with the opportunities that are being provided to our students in the skilled and technical sciences. Our students will fill much-needed positions that are currently open in these career fields. Support for expanding skilled and technical sciences is evident throughout our community, and we would like to thank everyone for that support." - Dr. Richard Hasty, Superintendent*



# AT THE BOARD TABLE

Leadership

Innovation

Vision

Engagement

#liveNASB

#weLIVEhere



1,960,000 Nebraskans

324,000 Students

1,700 Locally Elected School Board Members

260 Member Districts/ESUs

ONE NEBRASKA

## BOARD CALENDAR AGENDA ITEMS FOR YOUR DECEMBER MEETINGS

<http://members.nasbonline.org/index.php/board-leadership>

Each month, this space reflects the recommended and required upcoming agenda items to be included in the regular board meeting agenda. If you have questions about the monthly board meeting agenda items or recommendations for improving the Annual Board Calendar, please never hesitate to contact Marcia at 800-422-4572 or [mherring@NASBonline.org](mailto:mherring@NASBonline.org). View the full calendar at: <http://members.nasbonline.org/index.php/resources>

### MISSION, VISION & GOALS

Review School Improvement Plan: Strategic Plan Update; District Goals Update

### POLICY GOVERNANCE

Review, update, and adopt policy

### ACCOUNTABILITY & STUDENT ACHIEVEMENT

Career Education Content Areas – Revision begins in Dec to be implemented in Schools Aug 1, NDE Standards Revision Timeline

### ADVOCACY

Review the 2023 Legislative Session Calendar

### DISTRICT/ESU RESOURCES (BUDGET)

ESU Annual Financial Report – On or before Jan 31, the ESU Administrator of each ESU will submit to the Commissioner of Education an Annual Financial Report. § 79-1229

### REPORTS

Board Committees; Superintendent; Administrators: Review the NDE State of Schools Report

### BOARD-SUPERINTENDENT RELATIONS

Review the Superintendent Evaluation Summary

### BOARD LEADERSHIP DEVELOPMENT

NASB New Board Member Workshop

### LEARNING COMMUNITY

Report Evaluation and Research Results. On or before Jan 1, each learning community coordinating council shall use any funds received pursuant to section 79-1241.03 for evaluation of programs related to the community achievement plan. § 79-2104.02

### BOARD ELECTION

Notify the County Clerk/Election Commissioner. On or before Feb 1, the board must notify the County Clerk of Election Commissioner of the member seats open for the upcoming election.

### 2022 NEW BOARD MEMBER WORKSHOPS

Monday, December 5 - Gering  
Tuesday, December 6 - North Platte  
Wednesday, December 7 - Kearney  
Thursday, December 8 - York  
Register By Tuesday, November 29

Tuesday, December 13 - La Vista  
Wednesday, December 14 - Norfolk  
Register By Wednesday, December 7



The workshop agenda will include Open Meetings Law, Public Comment, Conflict of Interest, Closed Session, Policy, Community/Stakeholder Engagement, Social Media, Accountability and Student Achievement, Rule 10, Advocacy, Budget Finance, Board Meeting Protocols and Procedures, Superintendent Evaluation, and Board Self-Assessment, breakout session for ESU board members, and more. Register at [www.NASBonline.org](http://www.NASBonline.org).

Questions regarding the NBMW, please contact Marcia Herring, at [mherring@NASBonline.org](mailto:mherring@NASBonline.org) or 402-817-0296.

# ALICAP RECOGNIZES ITS ANNUAL AWARD WINNERS

Leadership

Innovation

Vision

Engagement

#liveNASB

#weLIVEhere



1,960,000 Nebraskans

324,000 Students

1,700 Locally Elected School Board Members

260 Member Districts/ESUs

ONE NEBRASKA

# ALICAP

183 NEBRASKA SCHOOLS AND ESUs

\$8 BILLION IN PROPERTY VALUES INSURED

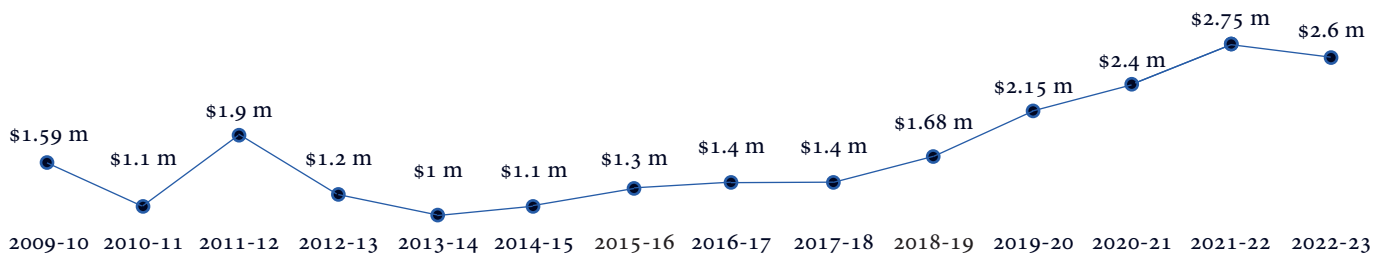
3,600 VEHICLES ON SCHEDULE

OVER \$1.3 BILLION IN PAYROLL INSURED

28,000 EMPLOYEES COVERED

1,100 CLAIMS HANDLED ANNUALLY

OVER \$28 MILLION GIVEN BACK IN DIVIDENDS SINCE 1990



MANY THANKS TO ALL ALICAP MEMBERS FOR THEIR TRUST, LOYALTY & DEDICATION

## 2021-2022 RECOGNITION PROGRAM AWARD WINNERS

**LOSS RATIO AWARD WINNER**  
**HARVARD PUBLIC SCHOOLS**

ALICAP WOULD LIKE TO CONGRATULATE THESE MEMBERS ON EARNING THIS YEAR'S SAFETY AWARDS.

**EXPERIENCE MODIFIER AWARD WINNERS**  
**BENNINGTON PUBLIC SCHOOLS & DAVID CITY PUBLIC SCHOOLS**

A STRONG SAFETY PROGRAM BEGINS WITH A SUPPORTIVE LEADERSHIP TEAM AND IS ACTED OUT BY EVERY STAFF MEMBER, EVERY DAY.

**SAFESCHOOLS AWARD WINNER**  
**PLATTSMOUTH COMMUNITY SCHOOLS**

KEEP UP THE GOOD WORK!



# THE NEBRASKA OPEN MEETINGS ACT & PUBLIC COMMENT

Leadership

Innovation

Vision

Engagement

#liveNASB

#weLIVEhere



1,960,000 Nebraskans 324,000 Students 1,700 Locally Elected School Board Members 260 Member Districts/ESUs ONE NEBRASKA

*Prior to her election to the State Board of Education in November 2020, Patti Gubbels served on the Norfolk Board of Education, and was a member of the NASB Board of Directors, and the NASB Legislation Committee since 2016.*

The Nebraska Open Meetings Act requires that meetings of public bodies, such as school boards and city and county boards, be open to the public so citizens can witness the work they do. This openness ensures the transparent formation of public policy and prevents important decisions from being made in secrecy. The Nebraska Open Meetings Act also enables citizens to attend and speak at public meetings through a public comment period. The Open Meetings Act does not require that citizens be allowed to speak at each meeting, however, citizens have the right to speak at some of the bodies' meetings.



The Nebraska State Board of Education (SBOE), as a public governing body, adheres to the requirements of the Nebraska Open Meetings Act. The SBOE, during the past year, included a public comment period on all but January and November monthly board meeting agendas. In addition, SBOE bylaws allow individuals to submit written comments in lieu of live testimony. So, even when agendas do not include public comment periods, citizens have an avenue to express their opinions or concerns with the Nebraska SBOE.

The agenda for the November SBOE meeting, published in advance of the meeting, did not include a public comment period. Individuals who wanted to provide testimony were allowed, as always, to submit written testimony to the board. Social media posts criticized the SBOE for not including public comment on their November board meeting agenda. Some posts implied that the SBOE does not care about the public's views, that we violated the Open Meetings Act by not including public comment at the November meeting and suggested that we are not fulfilling our responsibilities as elected officials by excluding public comment in November. A public official put out a statement saying the SBOE had abruptly cancelled public comment for the November meeting. Keep in mind that public comment was not included on the November board meeting agenda so it could not be cancelled. You cannot cancel something that was not planned.

I am sharing this situation because it provides some teachable moments and affords an opportunity to build an understanding of the Open Meetings Act in relation to public input. My mother taught me there are always at least two sides to every story, so it is important to not jump to conclusions, to consider multiple perspectives, to verify information, and to consider individual motivation for presenting partial or distorted information.

It is imperative that we, as citizens, understand that public meetings are governing bodies' meetings held in public. They are not public meetings. In other words, the governing bodies have the right to set agendas for their meetings and to determine at which meetings they will include public comment. The public has the right to be heard, but the governing bodies have the right to make and enforce rules regarding individual conduct at the meetings. Our government, as a republic, is founded on fundamental rights protected in the U.S. Constitution and on rights that are constantly being balanced against the rights of others. As a civilized society we all do well to remember and to respect the need to balance our rights with the rights of others.

*Disclaimer: The opinions from Dr. Patti S. Gubbels are hers and do not represent the Nebraska State Board of Education.*



NASB is sad to hear that Ann Mactier, the namesake for the annual School Board Members of the Year Award, passed away earlier this November at the age of 100. Mactier was a member of both the Omaha Board of Education and Nebraska State Board of Education and was a national leader in reading education and a major force in promoting phonics-based reading throughout the United States. NASB sends its condolences to the Mactier family.

# JOIN US FOR THE NEW BOARD MEMBER WORKSHOPS

Leadership

Innovation

Vision

Engagement

#liveNASB

#weLIVEhere



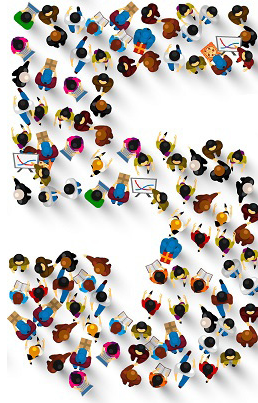
REG  
NOW!

Nebraskans 324,000 Students 1,700 Locally Elected School Board Members 260 Member Districts/ESUs ONE NEBRASKA

<http://members.nasbonline.org/index.php/new-board-member-workshops>

Following the November election, we estimate a 2023 class of newly elected board members to be in the range of 500 new school board members across Nebraska. If you are a district or ESU that will welcome new members to your board, we invite you to attend one of the NASB New Board Member Workshops this December.

The workshop will be an interactive work session and the agenda will include Open Meetings Law, Public Comment, Conflict of Interest, Closed Session, Policy, Community/Stakeholder Engagement, Social Media, Accountability and Student Achievement, Advocacy, Budget Finance, Board Meeting Protocols and Procedures, Superintendent Evaluation, Board Self-Assessment, and more. We highly encourage veteran board members and Superintendents to join your new board members at the table. Please feel free to reach out to Marcia Herring with any questions regarding these Workshops!



**DECEMBER 5 - GERING**

**DECEMBER 7 - KEARNEY**

**DECEMBER 13 - LA VISTA**



**DECEMBER 6 - NORTH PLATTE**

**DECEMBER 8 - YORK**

**DECEMBER 14 - NORFOLK**



**ENHANCE**  
the safety of your  
**SCHOOLS**  
with comprehensive & compliant  
background screening

**onesource**  
The Background Check Company

Neal Josten | 402.933.9999 ext. 5600  
njosten@onesourcebackground.com  
[onesourcebackground.com](https://onesourcebackground.com)



# NEW FACES - NASB'S LEGISLATIVE ISSUES CONFERENCE



Leadership

Innovation

Vision

Engagement

#liveNASB

#weLIVEhere



REG  
NOW!

Nebraskans 324,000 Students 1,700 Locally Elected School Board Members 260 Member Districts/ESUs ONE NEBRASKA

<http://members.nasbonline.org/index.php/legislative-issues-conference>

New Governor ... 16 New State Senators ... New Speaker ... New Committee Chairs ... Two New Faces on the State Board of Education ... New Commissioner of Education ... New AG ... New Faces in DC ... New Faces On Your Board. Presented annually, the Legislative Issues Conference is where you'll hear from the movers and shakers inside the Legislature about the key issues affecting Nebraska's public schools. The Governor's Office, Speaker, key Committee Chairs, a number of other Senators and education stakeholders are invited to share their respective views throughout the morning. See what key bills are in play and get a first hand look at anything that will have an impact on public education in Nebraska during this year's legislative session.

SUNDAY, JANUARY 22

6:00 PM Reception, Dinner & Program. Hospitality Event to Follow.  
"UP THE MOUNTAIN" with Senators Tom Brewer & Justin Wayne  
Black. White. Native. Male. Female. Urban. Rural. Conservative. Progressive.  
In the fall of 2021, five Nebraska legislators from different walks of life and different political perspectives spent months preparing to climb the legendary Mt. Kilimanjaro. To succeed, they had to set aside partisan and cultural differences to make an unbreakable team. Their hard work and cooperation got them to the top of the mountain and left them with lessons and memories for a lifetime. See what they learned from the mountain and from each other.



MONDAY, JANUARY 23

8:00 AM Registration  
8:30 AM Welcome & Introductions - Key Committee Chairs and a number of other Senators have been invited to share their respective views throughout the morning. Get a firsthand look at all the bills introduced that will have an impact on public education in Nebraska during this year's legislative session.  
12:00 PM Lunch with the Senators - This year's lunch will have open seating, as opposed to sitting with a particular senator.  
1:30 PM Adjournment (Speaker list subject to change)

REGISTER NOW AT

<https://nasb.enviseams.com/>



All districts are welcome to attend NSBA 2023!

NSBA's new governance model allows ALL school districts that are a member of their state association to attend NSBA Signature Events.

ADVANCED EARLY BIRD SAVINGS ENDS  
DECEMBER 14, 2022

Learn more and register now at  
<https://nsba.org/Events/NSBA-2023-Annual-Conference-and-Exposition>

# THIS MONTH IN ...

Leadership

Innovation

Vision

Engagement

#liveNASB

#weLIVEhere



1,960,000 Nebraskans

324,000 Students

1,700 Locally Elected School Board Members

260 Member Districts/ESUs

ONE NEBRASKA

## ... ALICAP & INSURANCE

Thanks to all those who attended the Annual ALICAP Membership Meeting on Wednesday November 16th. We had a great turnout and it was so good to see everyone!

Congrats again to our 4 Safety Recognition Award Winners:  
Bennington Public Schools, David City Public Schools, Harvard Public Schools and Plattsmouth Public Schools. We appreciate all that you do to keep our schools safe!

Happy Thanksgiving all!  
*Thanks, Megan!*

## ... SEARCH, STRENGTHS & AWARDS

### EDUCATION LEADERSHIP SEARCH SERVICE

Contact us with questions on superintendent search protocol, to schedule a proposal, or inquire about a vacancy. Deadlines are approaching for Osmond, Boone Central and Anselmo-Merna <https://nasb.myrevelus.com>

### GALLUP STRENGTHSFINDER

Those with the Maximizer theme are naturally attuned to excellence - - both in the projects and activities they take on and in what they see in individuals. This makes them valuable resources for their teams because they not only set the standard for team performance, but also recognize and draw out the unique contribution each person makes to the success of the team.

Email Shari Becker today at [sbecker@NASBonline.org](mailto:sbecker@NASBonline.org) for searches or to schedule a Gallup team session.

- Shari -

## ... ADVOCACY & GOVERNMENT RELATIONS

The election has passed, we know the "New Faces", here are some upcoming dates to keep in mind, be prepared for, and to join us to help advocate for public education in your district, community, and Nebraska!

1st Day of the 2023 Legislative Session  
Wednesday, January 4

Day 10 ... Final Day to Introduce Bills  
January 18

Legislative Issues Conference  
NEW FACES  
January 22-23 - Embassy Suites Lincoln  
*Register Now!*

*Call Colby & Matt with any questions!*

## ... POLICY

Open meetings laws often seem fairly straightforward but can be confusing to properly implement. Based on the State Attorney General's opinion, while school boards can legally require all persons providing public comment at a meeting to give their name and address for the record, it is important to collect only the information of those who actually did speak at that meeting. One way of doing that correctly is to have each speaker hand the secretary a note card with their information just before speaking. If the public comment period expires before everyone's had time to speak, this would prevent the collection of identifying information from non-speaking attendees and a possible reprimand from the A.G.

*Contact Jim to learn more!*

## ... BOARD LEADERSHIP

Check out "At the Board Table" on page 5.

### NEW BOARD MEMBER WORKSHOPS

December 5 - Gering  
December 6 - North Platte  
December 7 - Kearney  
December 8 - York  
December 13 - La Vista  
December 14 - Norfolk

*Marcia, Kari, Katie, Caden & Spencer*

## ... DATA ANALYTICS

More than one third of our Legislators will be new this next session and many of them do not understand the wide disparity in state school funding nor the particular challenges faced by your own district. As you talk to your State Senators, it's useful to know how your district's levy, per student costs, and state aid per student compares to others in your area or other districts of a similar size. Our Data Analytics program can deliver that information in an easy-to-read format for your board and administrators.

*Contact Jim to learn more!*



# THIS MONTH IN ...

Leadership

Innovation

Vision

Engagement

#liveNASB

#weLIVEhere



1,960,000 Nebraskans 324,000 Students 1,700 Locally Elected School Board Members 260 Member Districts/ESUs ONE NEBRASKA

## ... MEMBER ENGAGEMENT

It was wonderful to see so many of you at the State Education Conference last week! Thanks to each one of you for your school district/ESU leadership.

We look forward to seeing you at NASB's upcoming events!

New Board Member Workshops will be in Gering, North Platte, Kearney, York, La Vista & Norfolk this December.

The Legislative Issues Conference is scheduled for January 22-23, in Lincoln, this year at the Embassy Suites!

It was great visiting Litchfield, Arcadia, & Doniphan-Trumbull recently too.

*Sharon*

## ... ENERGY PURCHASING

With the first severe cold spell stretching across the nation this winter, districts often begin worrying what a colder than normal winter might do to their utility bills. CJUMP and NJUMP were created to lock in significant amounts of natural gas before those shortages arrive to provide districts with a high degree of price certainty for the utility portion of their budgets. Your district can also have this peace of mind and enjoy frequent savings for the upcoming years by joining the 111 members of our natural gas purchasing consortiums.

*Contact Jim to learn more!*

## ... TECHNOLOGY

### WELCOME NEW SUBSCRIBERS

Conestoga Public Schools

As you start to settle and certify your negotiated agreements, please remember to load them into the Contract Settlement Form or send them to Darion at [dmiller@nasbonline.org](mailto:dmiller@nasbonline.org)

Great seeing so many of you in Omaha last week!

Darion - [dmiller@NASBOnline.org](mailto:dmiller@NASBOnline.org)

Nicole - [nkobus@NASBOnline.org](mailto:nkobus@NASBOnline.org)  
[www.sparqdata.com](http://www.sparqdata.com)

Board Notes is published on a monthly basis as a member service. Advertising is available in every issue. To advertise or become an Affiliate, please contact Matt Belka for further information. Articles or advertising contained herein do not necessarily represent the views or policies of NASB.

Nebraska Association of School Boards  
1311 Stockwell Street - Lincoln, NE 68502  
Matt Belka, Editor - John Spatz, Publisher



Paul Grieger  
(800) 528-5145  
[pgrieger@dadco.com](mailto:pgrieger@dadco.com)



Cody Wickham  
(866) 809-5596  
[cwickham@dadco.com](mailto:cwickham@dadco.com)



Andy Forney  
(866) 809-5443  
[aforney@dadco.com](mailto:aforney@dadco.com)

## Building a Better Future with Nebraska's Public Finance Partner

D.A. Davidson & Co. has long been a leader in innovative debt financing for school districts. What we're most proud of are the relationships we've nourished and the strong community improvements that are made as a result.

Our public finance professionals take a personal interest and a hands-on approach, carrying our deals from start to finish. Because you deserve solutions tailored to fit you.

- School Bond Issues
- Tax Anticipation / Construction Notes
- Lease-Purchase Financing
- QCPUF Bonds
- Refinancing Bond Issues



**D | A | DAVIDSON**

450 Regency Parkway, Suite 400 | Omaha, NE 68114  
[dadavidson.com](http://dadavidson.com) | D.A. Davidson & Co. member FINRA and SIPC

# YOUR NASB BOARD OF DIRECTORS & STAFF

Leadership

Innovation

Vision

Engagement

#liveNASB

#weLIVEhere



1,960,000 Nebraskans 324,000 Students 1,700 Locally Elected School Board Members 260 Member Districts/ESUs ONE NEBRASKA

## YOUR NASB OFFICERS

<http://members.nasbonline.org/index.php/brdofdirectors>



Kim Burry - President  
Bayard



Sandy Noffsinger - President-Elect  
Dundy County Stratton



Stacy Jolley - Vice President  
Millard



Brad Wilkins - Past President  
Ainsworth

## YOUR NASB REGION DIRECTORS

<http://members.nasbonline.org/index.php/brdofdirectors>



Region 1 - Neal Kanel  
HTRS



Region 2 - Sarah Centineo  
Bellevue



Region 3 - Alan Moore  
ESU 3



Region 4 - Elizabeth Kumru  
Ralston



Region 5 - Shavonna Holman  
Omaha



Region 6 - Ricky Smith  
Omaha



Region 7 - Tracy Casady  
Omaha



Region 8 - Bob Rauner  
Lincoln



Region 9 - Annie Mumgaard  
Lincoln



Region 10 - Ed Swotek  
Malcolm



Region 11 - Jim Vlach  
Lyons-Decatur Northeast



Region 12 - Lisa Wagner  
Central City



Region 13 - Marilyn Bohn  
ESU 10



Region 14 - Steve Koch  
Hershey



Region 15 - Joel Carlson  
Cozad



Region 16 - Stephanie Summers  
David City



Region 17 - Michelle Reikofski  
Osmond



Region 18 - Susan Ernest  
Leyton



Region 19 - Amanda McGill Johnson  
Millard

## YOUR NASB STAFF

<http://members.nasbonline.org/index.php/nasb-staff>

John Spatz  
Executive Director



Makenzie Barry  
ALICAP Data &  
Financial Specialist



Shari Becker  
Director of Education  
Leadership Search Service



Matt Belka  
Director of Marketing,  
Communications & Advocacy



Megan Boldt  
Associate Executive Director/  
Director of ALICAP



Craig Caples  
Director of Technology



Abi Carlson  
Event & Search Service  
Associate



Colby Coash  
Associate Executive Director/  
Dir. of Government Relations



Katie Coble  
Board Leadership Associate



Sharon Endorf  
Director of  
Member Engagement



Caden Frank  
Board Leadership Associate



Marcia Herring  
Director of Board Leadership



Sallie Horky  
Chief Operating Officer



Rachel Horstman  
Business Manager



Nicole Kraus  
Events & Engagement  
Associate



Kem Loecker  
Executive Administrative  
Assistant



Jim Luebke  
Director of Policy Services



Kari Stephens  
Board Leadership Associate



Spencer Vogt  
Board Leadership Data Analyst



Lindsey Wooton  
Administrative Specialist





# YOUR 2022 NASB AFFILIATES

Leadership

Innovation

Vision

Engagement

#liveNASB

#weLIVEhere



1,960,000 Nebraskans 324,000 Students 1,700 Locally Elected School Board Members 260 Member Districts/ESUs ONE NEBRASKA

## YOUR 2022 PLATINUM AFFILIATES

<http://members.nasbonline.org/index.php/affiliate-member>

**ALICAP**

**AMERICAN FIDELITY**  
a different opinion

**Ameritas**  
Ameritas Investment Corp.  
Member FINRA/SIPC

**BCDM**  
architects

**Boyd Jones**

**BVH**  
ARCHITECTURE

**CLARK & ENERSEN**

**CMBA**  
ARCHITECTS

**COMMUNITY**  
BUILDING SOLUTIONS

**crouch**  
RECREATION

**D|A DAVIDSON**

**filament**  
ESSENTIAL SERVICES

**jmc**

**NEBRASKA**  
LIQUID  
ASSET FUND

**PIPER | SANDLER**

**prm**  
PUBLIC RISK  
MANAGEMENT  
INCORPORATED

**SPARQ DATA**  
SOLUTIONS

## YOUR 2022 GOLD AFFILIATES

**CHEEVER**  
construction

**CIT** CORNHUSKER  
INTERNATIONAL  
TRUCKS

**CS**

**Facility Advocates**  
Dave Raymond

**First National**  
Capital Markets

**KINGERY**  
CONSTRUCTION CO.

**lunchtime**  
SOLUTIONS  
TIME FOR FRESH

**Master's**  
transportation

**MCL**  
construction

**MIDWEST**  
ALARM  
SERVICES  
Tech connected. Lives protected.

**Navitas**  
CONSIDERING RESOURCES • RENEWING BUILDINGS

**Nemaha**  
DESIGN CONSTRUCTION

**onesource**  
The Background Check Company

**Optimized**  
Systems

**Outdoor Recreation Products**

**TRANE**

### ACCOUNTING

Watts and Hershberger, P.C.  
Jim Watts  
402-483-7512 - jw1cpa@aol.com - <https://gowh.com/>  
(CPA, Accounting)

### ARCHITECTS

BCDM Architects  
Pat Carson - 402-384-6422  
pcarson@bcdm.net - [www.bcdm.net](http://www.bcdm.net)  
(Creating environments that form people)  
\* PLATINUM LEVEL AFFILIATE

BVH Architecture  
Cleve Reeves - 402-475-4551  
creeves@bvh.com - [www.bvh.com](http://www.bvh.com)  
(A design-centered critical practice embracing a creative and collaborative process to design architecture that enhances the community in which it serves.)  
\* PLATINUM LEVEL AFFILIATE

### ARCHITECTS

Clark & Enersen  
Steve Miller - 402-477-9291  
steve.miller@clarkenersen.com - [www.clarkenersen.com](http://www.clarkenersen.com)  
(From the very beginning, partnership has defined us.)  
\* PLATINUM LEVEL AFFILIATE

CMBA Architects  
Jim Brisnehan - [brisnehan.j@cmbaarchitects.com](mailto:brisnehan.j@cmbaarchitects.com)  
Troy Keilig - [keilig.t@cmbaarchitects.com](mailto:keilig.t@cmbaarchitects.com)  
Courtney Koch - [koch.c@cmbaarchitects.com](mailto:koch.c@cmbaarchitects.com)  
308-384-4444 - [www.cmbaarchitects.com](http://www.cmbaarchitects.com)  
(Architecture, Master Planning, Interiors, Bond Assistance/Community Engagement)  
\* PLATINUM LEVEL AFFILIATE

Carlson West Povondra Architects  
Jamie Eckmann - 402-551-1500  
jeckmann@cwpaarchitects.com - [www.cwpaarchitects.com](http://www.cwpaarchitects.com)  
(Architecture, planning, feasibility studies)  
\* GOLD LEVEL AFFILIATE

### ARCHITECTS

DLR Group  
Vanessa Schutte - 402-393-4100  
vschutte@dlrgroup.com - [www.dlrgroup.com](http://www.dlrgroup.com)  
(Architecture, engineering, Ed. facility planning)

### AWARDS & PLAQUES

Awards Unlimited  
Tim Moravec - 402-474-0815  
tmoravec@awardsunlimited.com  
[www.awardsunlimited.com](http://www.awardsunlimited.com)  
(Trophies, awards, plaques, etc.)

### BUILDING CONTROLS/SERVICES

Control Management Inc.  
Nathan Haug - 402-571-9454  
nathan@cmiomaha.com - [www.cmiomaha.com](http://www.cmiomaha.com)  
(Building Automation, Security and Energy Optimization for New and Existing Systems)

# YOUR 2022 NASB AFFILIATES

Leadership

Innovation

Vision

Engagement

#liveNASB

#weLIVEhere

## CONSULTING

Akagi Consulting LLC  
Mark Akagi - markakagi3@gmail.com

## CONSTRUCTION SERVICES

BD Construction  
Marsha Wilkerson - 308-234-1836  
mwilkerson@bdconstruction.com - BDconstruction.com  
(Construction Management at Risk and as Agent, Facility Planning, Site Selection, Pre-bond Community Education, Stakeholder Engagement)  
\*GOLD LEVEL AFFILIATE

Boyd Jones Construction  
Emily Bannick - 402-550-1808  
ebannick@boydjones.biz - www.boydjones.biz  
(Construction Mgmt, Pre-Bond, Pre-Construction, Facility Evaluation, Early Stage Planning)  
\* PLATINUM LEVEL AFFILIATE

Cheever Construction  
Douglas Klute - 402-477-6745  
dklute@cheeverconstruction.com  
www.cheeverconstruction.com  
\* GOLD LEVEL AFFILIATE

Kingery Construction Co  
Rod Berens - 402-465-4400  
rodb@kccobuilders.com - www.kccobuilders.com  
(Design-Bid-Build, Design-Build, Construction Mgmt, General Contractor, Pre-Bond/Pre-Construction)  
\* GOLD LEVEL AFFILIATE

MCL Construction  
Heather Fredrick - 402-339-2221  
haf@mcconstruction.com - www.mcconstruction.com  
(Navigating the entire construction process)  
\* GOLD LEVEL AFFILIATE

Nemaha Sports Construction Inc  
Don Traska - 402-434-5488  
don.traska@nemaha.net - www.nemaha.net  
(Athletic Fields, Parks & Recreation, Hardscapes)  
\* GOLD LEVEL AFFILIATE

Tetrad Property Group  
Cassie Paben - 402-580-2355  
cpaben@tetradpropertygroup.com - tetradpropertygroup.com  
(Owner's Representative, Facility Planning, Site Selection, Pre-Bond Community Education, Stakeholder Engagement, Facility Management)

W. A. Klinger  
Matt Thompson - 712-233-3233  
mthompson@waklinger.com - www.waklinger.com  
(Pre-Construction, Construction Management, Design-Build, and General Contracting Services.)

## DATA SECURITY, VIDEO & COMMUNICATIONS

Filament Essential Services  
Lisa Lewis - 402-479-6661  
lisa@fes.org - www.filamentservices.org  
(SOCS websites+apps, Marketing/Branding/Video, Data, Filament Essential Services is a new division of FES)  
\* PLATINUM LEVEL AFFILIATE

## DESIGN BUILD

Ayars & Ayars, Inc.  
Darl Naumann - 402-435-8600 - 402-570-9214  
dnaumann@ayarsayars.com - www.ayarsayars.com  
(Design-build leader focused on creating opportunities by building beneficial relationships, processes, and projects)  
\*GOLD LEVEL AFFILIATE

## ENERGY SERVICES

Community Building Solutions  
Jacob Hurla - 785-580-3014  
jhurla@communitybuildingsolutions.com  
(Providing a cost-effective avenue for school districts to address outdated equipment, resolve comfort challenges, and reduce energy and maintenance costs. Serving underserved rural communities cost-effectively is the core of our mission.)  
\* PLATINUM LEVEL AFFILIATE

Facility Advocates  
Dave Raymond - 402-206-8777  
draymond@facilityadvocates.com  
www.facilityadvocates.com  
(Building Construction & Energy Services)  
\* GOLD LEVEL AFFILIATE

Navitas  
Nick Rosenberry - 402-840-0370  
nrosenberry@navitas.us.com - https://navitas.us.com/  
(Energy Savings, Building Construction, Energy Management, Guaranteed Results)  
\* GOLD LEVEL AFFILIATE

Optimized Systems  
Peter Larson - 605-212-0783  
peter.larson@optimized-systems.com  
www.Optimized-Systems.com  
(Energy Optimization, Energy Management, Commissioning, Metering, Energy Studies, Mechanical System Assessments, Troubleshooting)  
\* GOLD LEVEL AFFILIATE

TRANE  
Matt Foertsch - 402-596-8007  
mfoertsch@trane.com - www.trane.com/omaha  
(Building Construction & Energy Services. A global provider of indoor comfort systems)  
\* GOLD LEVEL AFFILIATE

## FINANCIAL SERVICES

Ameritas Investment Company  
Jennifer Kobza - 402-214-2118  
jennifer.kobza@ameritas.com - (Public Finance)  
\* PLATINUM LEVEL AFFILIATE

D.A. Davidson & Co.  
Paul Grieger - 402-392-7986 - pgrieger@dadco.com  
Cody Wickham - 402-392-7989 - cwickham@dadco.com  
Andy Forney - 402-392-7988 - aforney@dadco.com  
www.dadavidson.com  
(Bonds/Election Services, Lease Purchase)  
\* PLATINUM LEVEL AFFILIATE

## FINANCIAL SERVICES

First National Capital Markets  
Tobin Buchanan - 308-352-8328 - tbuchanan@fnni.com  
Carl Dietz - 308-289-3920 carldietz@fnni.com  
Matt Fisher - 308-380-3831 mfisher@fnni.com  
www.fncapitalmarkets.com  
(Public Finance, Election Guidance)  
\* GOLD LEVEL AFFILIATE

Nebraska Liquid Asset Fund - NLAF  
Barry Ballou - 402-705-0350  
balloub@pfnm.com - www.NLAFpool.org  
(Liquid Asset Fund, financing programs)  
\* PLATINUM LEVEL AFFILIATE

Piper Sandler  
Jay Spearman - 402-599-0307  
jay.spearman@psc.com  
(Financing for Capital Construction Products, Bonds, Refunding Bonds, Notes, NASB Lease Purchase)  
\* PLATINUM LEVEL AFFILIATE

## FOOD SERVICE

Lunchtime Solutions  
Susan Gracey - 402-984-4546  
s.gracey@lunchtimesolutions.com  
www.lunchtimesolutions.com  
(Progressive Food Service Management)  
\* GOLD LEVEL AFFILIATE

Opaa! Food Management of Nebraska  
Greg Frost - 816-210-9359  
gfrost@opaafod.com - www.opaafod.com  
(Contract Food Service Management)

## FUNDRAISING

Omaha Public Schools Foundation  
Toba Cohen-Dunning  
402-502-3003 - toba.cohendunning@ops.org  
https://omahapublicschoolsfoundation.org  
(The Omaha Public Schools Foundation enriches students' lives by funding opportunities for success.)

## INSURANCE SERVICES

American Fidelity  
Stacey Anderson  
402-432-2251 - Stacey.anderson@americanfidelity.com  
www.americanfidelity.com/nebraska  
(Solutions built for the education community)  
\* PLATINUM LEVEL AFFILIATE

Blue Shield of Nebraska  
Cortney Ray - 402-458-4823  
cortney.ray@nebraskablue.com  
www.nebraskablue.com  
(Group health insurance)  
\* GOLD LEVEL AFFILIATE

National Insurance Services  
Steve Ott - 800-627-3660  
sott@nisbenefits.com - www.nisbenefits.com  
(Group LTD, Life, Vision, Special Pay Plans, HRA's)



# YOUR 2022 NASB AFFILIATES

Leadership

Innovation

Vision

Engagement

#liveNASB

#weLIVEhere

## INSURANCE SERVICES

Public Risk Management  
Sheri Shonka - 402-884-3751 - 877-649-4612  
sheri.shonka@prmne.com - www.alicap.org  
(ALICAP, Insurance services)  
\* PLATINUM LEVEL AFFILIATE

## LEGAL SERVICES

Mueller Robak, LLC  
William Mueller - 402-434-3399  
mueller@muellerrobak.com  
(Lobby firm)

## MENTORING

TeamMates Mentoring  
Hannah Miller - 319-610-8538  
hannah@teammates.org - www.teammates.org  
(Together we transform lives)  
\* Silver Level Affiliate

## PLAYGROUND/SCOREBOARDS/SURFACING

Creative Sites, LLC  
Julie Kutilek - 402-614-4606 - 800-266-1250  
julie@creativesitesllc.com  
(Playground equipment and site furnishings)  
\* GOLD LEVEL AFFILIATE

Crouch Recreation  
Eric Crouch - 402-496-2669  
eric@crouchrec.com - www.crouchrec.com  
(Playgrounds, Shelters, Scoreboards, Safety Surfacing & Site Amenities Manufacturers Rep)  
\* PLATINUM LEVEL AFFILIATE

Fisher Tracks, Inc.  
Jordan Fisher - 800-432-3191 - 515-432-3191  
jfisher@fishertracks.com - www.fishertracks.com  
(Installation, Refurbishment & Design Build of All-Weather Running Tracks)

Outdoor Recreation Products  
Don Wilson - 402-289-0400 - don@outdoorrec.net  
www.outdoorrecreationproducts.com  
(Your choice for a reputable playground and splashpad company serving Nebraska)  
\* GOLD LEVEL AFFILIATE

## SAFETY & SECURITY SERVICES

One Source The Background Check Company  
Neal Josten - 402-933-9999  
njosten@onesourcebackground.com  
www.onesourcebackground.com  
(Employment, Volunteer, Contractor Screening)  
\* GOLD LEVEL AFFILIATE

## TECHNOLOGY CONSULTING

PRISM advisors  
Jason Richards - 402-593-8911  
jprichards@prism-advisors.com  
www.prism-advisors.com  
(PEOPLE, PROCESS & SYSTEMS. IT strategic planning and project management through RFP to implementation)

## TECHNOLOGY/SOFTWARE

JMC  
Shelby Valkos - 800-524-8182  
shelby@jmcinc.com - https://www.jmcinc.com/  
(Smart software for even smarter schools)  
\* PLATINUM LEVEL AFFILIATE

Midwest Alarm Services  
Mike Wells - 402-331-6111 - 402-474-3737  
Mike.Wells@mw-as.com  
(Life Safety Systems provider)  
\* GOLD LEVEL AFFILIATE

Sparq Data Solutions  
Craig Caples - 402-423-4951  
ccaples@sparqdata.com - www.sparqdata.com  
(Paperless Board Meetings, Teacher Negotiations, Public Document Management, Document Imaging & Scanning, Online Policy)  
\* PLATINUM LEVEL AFFILIATE

## THERAPY SERVICES

Central Nebraska Rehabilitation Services  
Mary Walsh-Sterup - 308-675-1853 ext. 3222  
mary@cnrehab.com - www.cnrehab.com  
(Providing PT, OT and Speech therapy in the school system)

## TRANSPORTATION

Cornhusker International  
Russ Folts - 402-466-8461 ext 206  
russ.folts@cornhuskerinternational.com  
www.cornhuskerinternational.com  
(With six locations across Nebraska, Cornhusker International offers your best choice in new and pre-owned School Buses, Compliant Activity Buses, plus full parts and service for all makes and models)  
\* GOLD LEVEL AFFILIATE

Master's Transportation  
Mariya Goodbrake - 800-783-3613  
mgoodbrake@masterstransportation.com  
www.masterstransportation.com  
(Your trusted source for safe, reliable, and innovative group transportation solutions.)  
\* GOLD LEVEL AFFILIATE

BOARD NOTES IS PUBLISHED ON A MONTHLY BASIS AS A MEMBER SERVICE. ADVERTISING IS AVAILABLE IN EVERY ISSUE. TO ADVERTISE OR BECOME AN AFFILIATE, PLEASE CONTACT MATT BELKA FOR FURTHER INFORMATION. ARTICLES OR ADVERTISING CONTAINED HEREIN DO NOT NECESSARILY REPRESENT THE VIEWS OR POLICIES OF NASB.



## TO THE CLASS OF ...

<http://members.nasbonline.org/index.php/news-resources/videos>

As this year's School Board Member Graduating Class make their final motions and leave their board room one last time we asked them what exactly they would like the next crop of school board members to know.

And thank you, to the Class of 2022 for your time, commitment, and dedication to the betterment of all things public education in Nebraska. Your district, community, and the state is a better place because of you and the path you've paved for the next generation of school board members.

Thanks to our sponsors of this video: ALICAP, American Fidelity, Boyd Jones, BVH Architecture, Crouch Recreation, DA Davidson, DLR Group, Facility Advocates, First National Capital Markets, Sparq Data Solutions, & VS America.





1311 STOCKWELL STREET  
LINCOLN, NE 68502  
WWW.NASBONLINE.ORG

RETURN SERVICE REQUESTED

# NASB BOARD NOTES

A MONTHLY PUBLICATION FROM THE NEBRASKA ASSOCIATION OF SCHOOL BOARDS



Leadership

Innovation

Vision

Engagement

#liveNASB

#weLIVEhere

1,960,000 Nebraskans 324,000 Students 1,700 Locally Elected School Board Members 260 Member Districts/ESUs ONE NEBRASKA

**WORKING TOGETHER DOES WIN!**  
**THE ANNUAL PASSING OF THE GAVEL**  
**PLATTSMOUTH ADDS NEW CTE ADDITION**  
**AT THE BOARD TABLE**

**ALICAP RECOGNIZES ITS ANNUAL AWARD WINNERS**  
**THE NEBRASKA OPEN MEETINGS ACT & PUBLIC COMMENT**  
**NEW BOARD MEMBER WORKSHOPS & NEW FACES**

**THIS MONTH IN ...**  
**... AND MUCH MORE!**

The Nebraska Association of School Boards provides programs, services and advocacy to strengthen public education for all Nebraskans. Learn more at [www.NASBOnline.org](http://www.NASBOnline.org)